



PARTNERS

REAL ESTATE

Flat 3, 33 Demesne Road, Douglas - IM1 3DZ

Isle Of Man

Guide Price £195,000



Flat 3

33 Demesne Road, Isle Of Man

- Well-positioned apartment in a convenient central Douglas location
- Situated within easy reach of local shops, transport links and amenities
- Ideal for first-time buyers, investors, or those looking to downsize
- Low-maintenance living in a well-established residential area
- Access to Douglas town centre and seafront within a short distance
- Strong rental demand area (suitable for buy-to-let investment)
- Good transport connections to wider Isle of Man network
- Located in a popular residential block/setting
- No onward chain
- Gas Central Heating, uPVC Double Glazed



Flat 3

33 Demesne Road, Isle Of Man

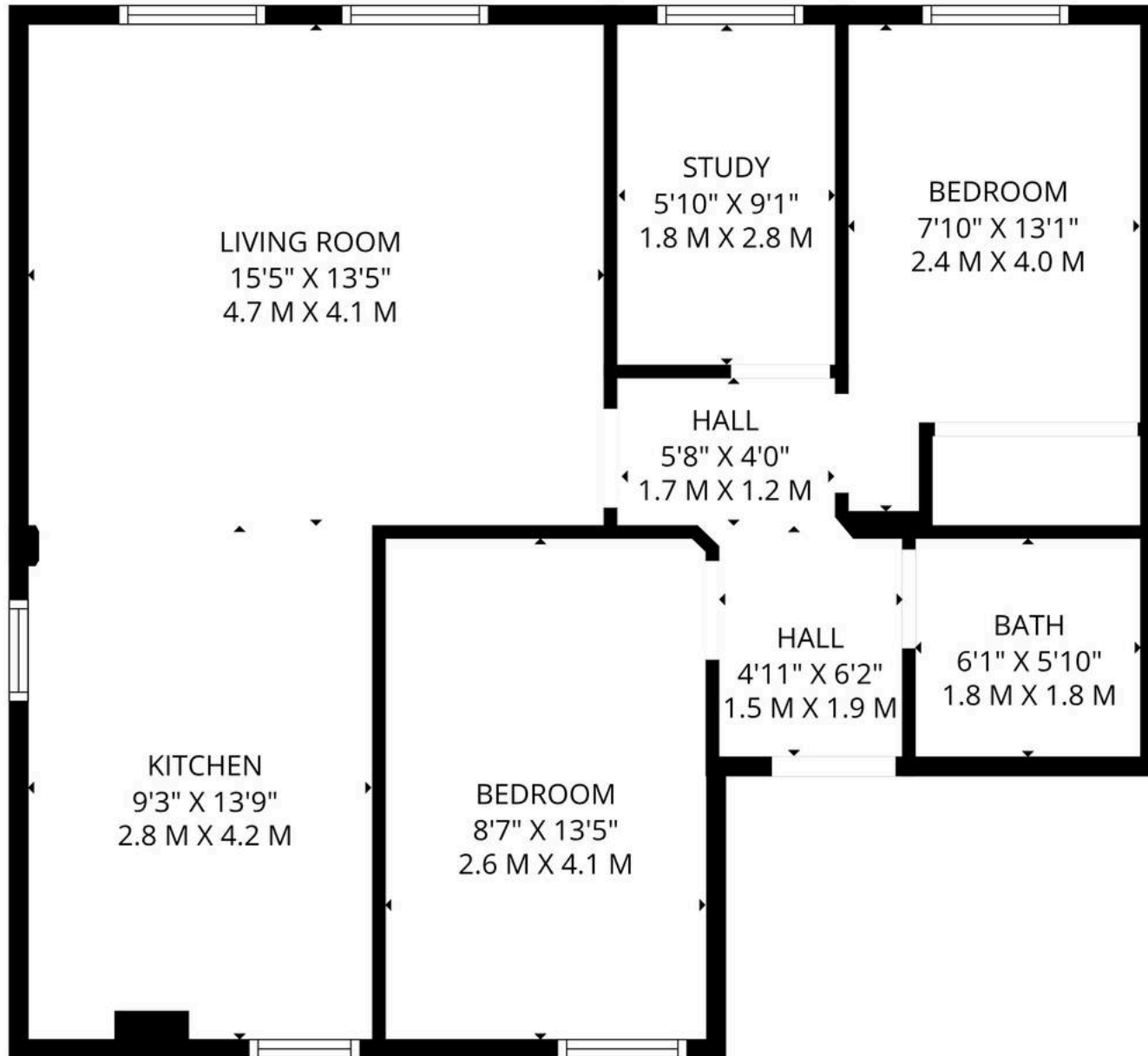
Spacious second-floor apartment in a converted period building, ideal for first-time buyers or investors

- 3 bedrooms (2 Double, 1 single/study)
- 1 bathroom with modern fittings
- open plan living/kitchen/dining area
- Prime central Douglas location — within easy walking distance of shops, town centre, amenities, harbour, and transport links
- Convenient second-floor position with good natural light
- Excellent rental potential due to high-demand central location
- No onward chain
- Close to local schools, supermarkets, restaurants, and coastal walks

Inclusions: all fitted floor coverings, blinds, curtains, light fittings, and the built-in wardrobe.

Appliances: oven, hob, extractor, fridge freezer, washing machine and tumble dryer.





TOTAL: 724 sq. ft, 67 m²
 1ST FLOOR: 724 sq. ft, 67 m²
 EXCLUDED AREAS: WALLS: 58 sq. ft, 6 m²

FLOOR PLAN CREATED BY INVISION MEDIA & MARKETING. MEASUREMENTS DEEMED HIGHLY RELIABLE BUT NOT GUARANTEED.





Partners (Isle of Man) Limited

64 Duke Street, Douglas, Isle Of Man - IM1 2AR

01624 777044 · hello@partners.co.im · partners.co.im



All measurements are approximate and for general guidance only and whilst every attempt has been made to ensure accuracy, they must not be relied on. The fixtures, fittings and appliances referred to have not been tested and therefore no guarantee can be given that they are in working. Internal photographs are reproduced for general information and it must not be inferred that an item shown is included with the property. Copyright ©Partnersrealestate. Partners Real Estate (Group) registered at 64 Duke Street, Douglas, Isle of Man, IM1 2AR