



BARRETT
—ESTATES—



28 Ringwood Drive, Leigh-on-Sea, Essex, SS9

Asking Price: £375,000
Freehold

28 Ringwood Drive, Leigh-on-Sea, Essex, SS9 5HG

Take a look inside this spacious 3 bedroom semi detached home located in this sought after area.

The home benefits from having its own garage & drive at the rear and being situated on this lovely corner plot with fantastic potential for extension and driveway conversions STPP.

Sold with No Onward Chain, this is one house not to be missed. Call today to arrange your viewing and avoid disappointment.

Council Tax Band – C

Floor Area - 925 ft² / 86 m

Electricity Supply – Mains standard

Gas Supply – Mains standard

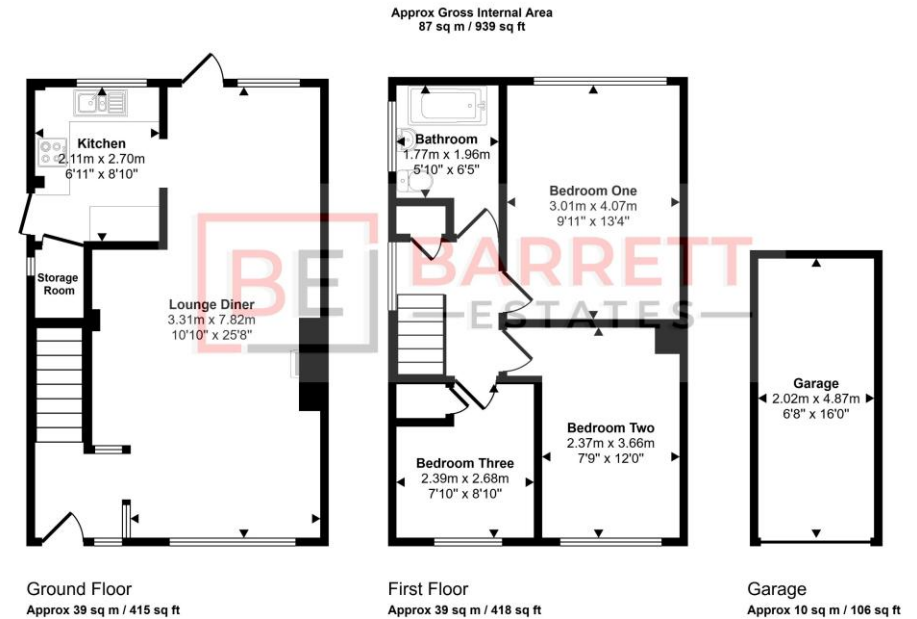
Water Supply – Mains standard

Sewerage – Mains standard

Heating – Gas central heating

Flood Risk – Very Low

Conservation Area - No



This floorplan is only for illustrative purposes and is not to scale. Measurements of rooms, doors, windows, and any items are approximate and no responsibility is taken for any error, omission or mis-statement. Icons of items such as bathroom suites are representations only and may not look like the real items. Made with Made Snappy 360.

Broadband

- Basic 13 Mbps
- Superfast 77 Mbps
- Ultrafast 5500 Mbps

Mobile Signal Coverage

- EE Average
- Vodafone Good
- Three Average
- O2 Good

Satellite / Fibre Availability

- BT Yes
- Sky Yes
- Virgin No



