



BARRETT
—ESTATES—



241 Nevendon Road, Wickford, Essex, SS12 0PY

Offers in excess of:
£650,000

241 Nevendon Road, Wickford, Essex, SS12 0PY

NO ONWARD CHAIN. Take a look inside this extremely spacious 5 bedroom family home, nestled in a sought-after area of Town. This stunning detached house offers a perfect blend of style and functionality.

Situated on a corner plot, boasting a spacious, private garden, ideal for outdoor entertaining and relaxation, this property also features off-street parking and a double length garage, providing ample space for vehicles and storage.

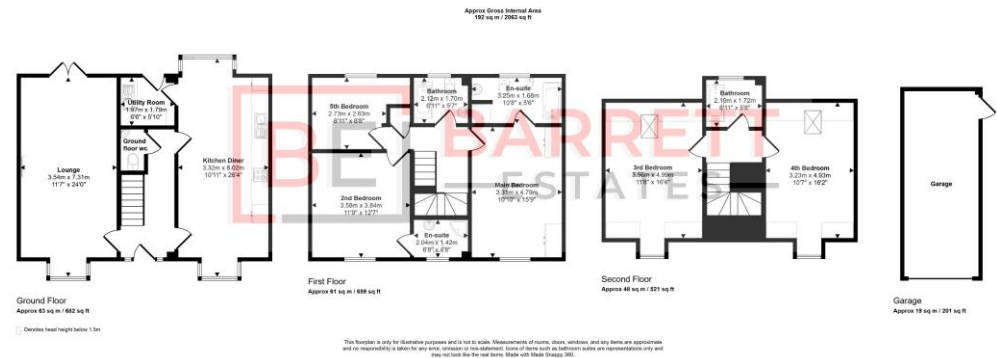
The interior of the house is thoughtfully designed, with an emphasis on open-plan living and natural light. The modern kitchen diner is a highlight, equipped with high-end appliances and ample storage space.

To the first and second floor, there are 5 bedrooms, all generously sized, 2 of them have their own en-suites, and there are 2 further bathrooms.

With its prime location, high-quality finishes, and abundance of amenities, this property is sure to attract buyers seeking a luxurious and convenient lifestyle.

Don't miss the opportunity to make this house your dream home.

Local Authority - Basildon
Council Tax Band: F
Annual Price: £3,242



EPC: C (72)
Council Tax Band: F



