



**BARRETT**  
—ESTATES—



**Church House, Main Road, Bicknacre, CM3 4HA**

**Asking Price: £750,000**  
*Freehold*

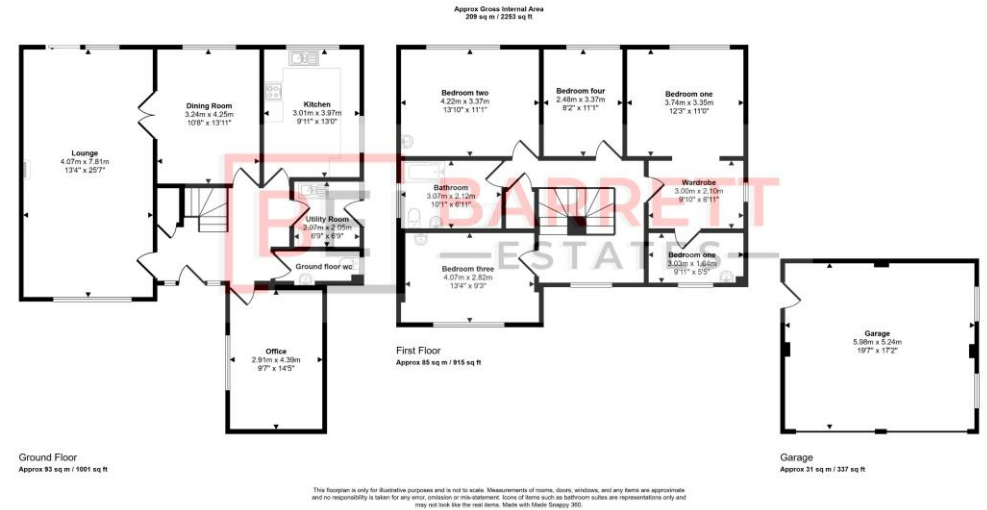
# Church House, Main Road, Bicknacre, Chelmsford, Essex, CM3 4HA

Step inside this superb fully detached 4 bedroom family sized house situated on a large sized plot in this pleasant and quiet village location. The home offers well planned and accommodation with the benefit of 4 double bedrooms, large lounge, separate dining room, separate office, utility room, modern kitchen and bathroom, huge garden, double garage and parking for many vehicles.

Sold with no onward chain and situated within a 10 minute walk of Priory Primary School, local shops, pub, playing fields and park or within a 10 minute drive to South Woodham Ferrers with ASDA & Sainsbury superstores and an abundance of primary schools and William De Ferrers secondary school.

## Accommodation & Amenities

- Four Double Bedrooms
- Large Lounge
- Separate Dining Room
- Large Office
- Spacious Fitted Kitchen
- Utility Room
- Modern Bathroom / wc with Separate Shower
- Large Rear Garden
- Double Garage
- Driveway For Numerous Vehicles
- No Onward Chain
- Ground Floor wc



EPC: B (82)  
Council Tax Band: G



