



12 Carters Way

Wisborough Green, Billingshurst, West Sussex, RH14 0BY

www.alexharveystateagents.co.uk



Alex Harvey
A passion for property

12 Carters Way

A beautifully presented four-bedroom family home, situated on a mature plot with a south facing rear garden and driveway parking. Located in the popular village of Wisborough Green, close to local amenities and within a short distance of Billingshurst mainline railway station.

- FOUR DOUBLE BEDROOMS
- TWO BATH/SHOWER ROOMS
- TWO RECEPTION ROOMS
- UTILITY AND DOWNSTAIRS CLOAKROOM
- SOUTH-FACING REAR GARDEN
- DRIVEWAY PARKING



This beautifully proportioned semi-detached home offers plentiful and versatile accommodation with mature gardens and driveway parking.

The bright and welcoming hallway provides access to the open-plan ground floor and stairwell to the first floor. The sitting room is a lovely bright space with a modern feature fireplace with a wood-burner and solid wood mantel. This leads on to the dining area of the kitchen/dining room, with plenty of natural light from two sets of sliding doors, the first set of which lead into the conservatory. The kitchen is a real highlight of this home, fitted with modern glossy units with composite stone worktops and finished with contemporary, white tiling. Appliances include a split-level double oven, an induction hob with extractor over, and integrated fridge and dishwasher. The attached utility room has space with plumbing for a washing machine and offers access to the downstairs cloakroom and to the remaining storage space.

The central stairwell leads to the first-floor landing which leads to all four double bedrooms and the family bathroom. Bedroom one has a built-in wardrobe and the comfort of an ensuite shower room. The luxurious family bathroom has been fitted with a black and white suite comprising panelled bath with shower and shower screen, WC, and a basin unit with storage under.

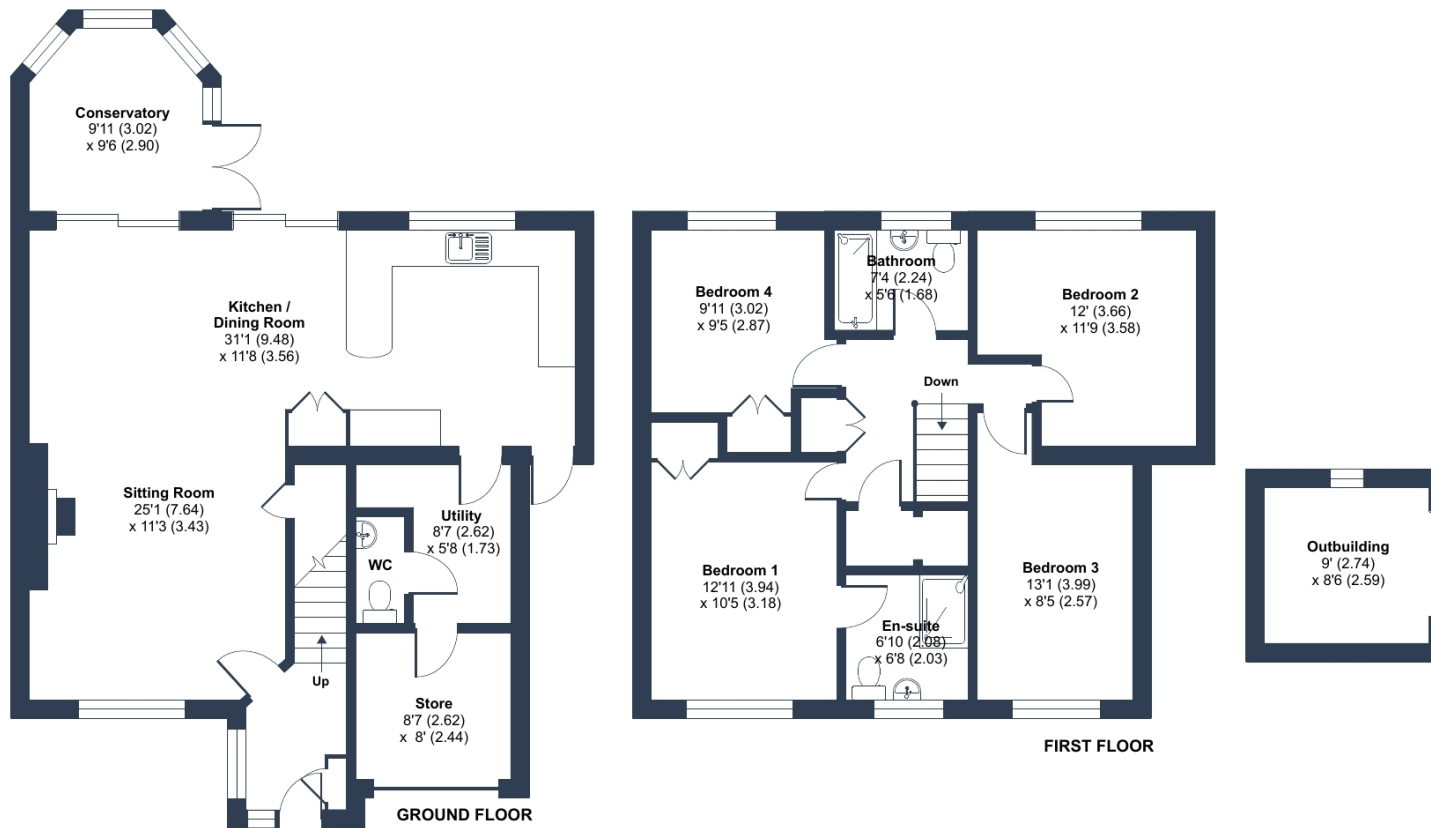


OUTSIDE

The property is approached via a driveway, with parking for four cars. A side gate leads to the south-facing, landscaped rear garden which is mainly laid to lawn with raised flower beds and decking. The ample patio area offers the perfect space for alfresco dining and summertime entertaining. There is an outbuilding, with power & light, which is currently used as a workshop, but could equally be converted to a garden study.

The popular village of Wisborough Green is renowned for its central Village Green, which plays host to many local events, and has a shop, Post Office, primary school, two well-reviewed public houses and the parish church. Billingshurst is a short drive away, providing shopping facilities, schooling for all age groups, a leisure centre, and a mainline station with services into London (Victoria), Gatwick and the south coast. Horsham and Gatwick Airport are approximately 10 and 32 miles away respectively.





Approximate Area = 1526 sq ft / 141.7 sq m
 Store = 68 sq ft / 6.3 sq m
 Outbuilding = 76 sq ft / 7 sq m
 Total = 1670 sq ft / 155.1 sq m

For identification only - Not to scale

 Floor plan produced in accordance with RICS Property Measurement 2nd Edition, Incorporating International Property Measurement Standards (IPMS2 Residential). © nlichecom 2026. Produced for Alex Harvey Estate Agents. REF: 1425145

Agents Notes: Measurements, areas and distance are only approximate. These are to only be used for guidance and are intended to give a fair overall summary of the property. They do not form part of any contract or offer and should not be relied upon as a statement or representation of fact. Photographs may include views of the local area and lifestyle shots. No undertaking is given as to the structural condition of the property, or any necessary consents or the operating ability or efficiency of any service linked to the property, system or appliance.

Services

Electricity, solar panels, oil, water and mains drainage are currently connected to the property.
 Council Tax Band E. EPC-C.

Viewings by appointment only - Please contact Alex Harvey Estate Agents on **01403 784110**
 or email alex@alexharveyestateagents.co.uk | www.alexharveyestateagents.co.uk

