

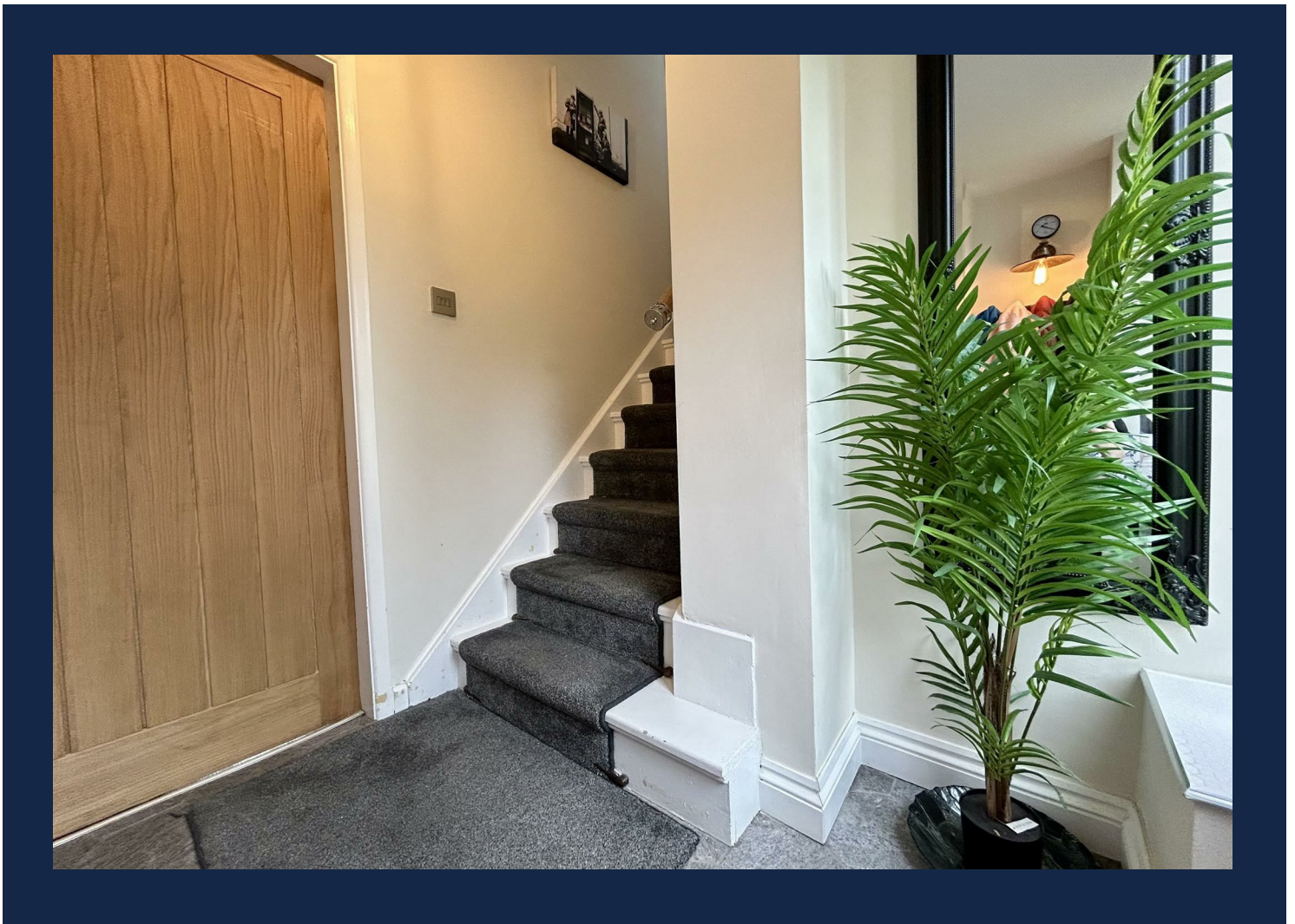
Grove.

FIND YOUR HOME



135 Abbey Road
Halesowen,
B63 2HG

Offers In The Region Of £250,000

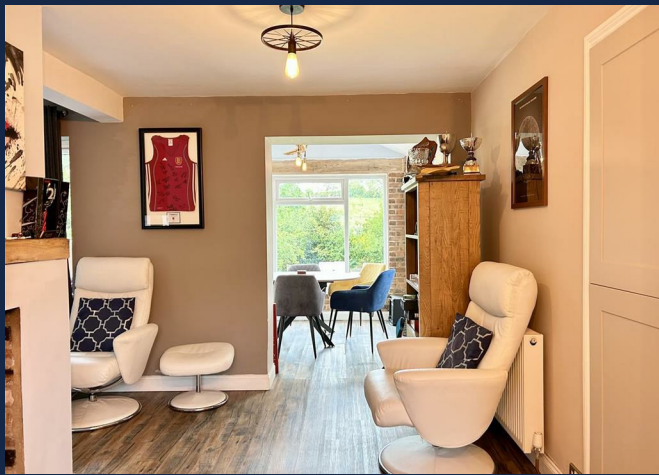


On Abbey Road, Halesowen, this attractive semi-detached home presents an excellent opportunity for first-time buyers seeking a well-positioned property with beautiful green views to the rear.

The property benefits from a driveway to the front, with a pathway leading to the entrance door. Internally, the accommodation briefly comprises an entrance hall with stairs rising to the first floor and access into the living room. A standout feature of the home is the dual-aspect log burner, creating a warm and inviting atmosphere while being visible from both the living room and kitchen. The stylish kitchen is a particular highlight, featuring shaker-style cabinetry and integrated appliances, while also providing access to the dining room and utility area, offering practical and versatile living space. Upstairs, the property offers two well-proportioned bedrooms and a family bathroom. To the rear, the generously sized garden enjoys lovely open views across surrounding greenery, creating a peaceful outdoor setting.

Conveniently situated close to a range of local amenities, including shops and transport links along Stourbridge Road, well-regarded schools and Huntingtree Park, this home is perfectly suited to first-time buyers, small families, and professionals alike. JH 18/05/2026 EPC=D







Approach

Via a block paved driveway, block paved pathway leading to double glazed obscured front door into the entrance hall.

Entrance hall

With stairs to first floor accommodation, central heating radiator, door into the lounge.

Lounge 13'1" x 9'6" min 8'2" max (4.0 x 2.9 min 2.5 max)

Double glazed window to rear, central heating radiator, feature log burner and entrance into kitchen.

Kitchen 16'4" x 7'10" (5.0 x 2.4)

Two double glazed windows to front, central heating radiator, Shaker style matching wall and base units with square top wood effect surface over, splashback tiling to walls, integrated oven, microwave and fridge freezer, electric hob, extractor, storage cupboards and door into utility space and entrance into dining room.

Dining room 8'10" x 9'2" (2.7 x 2.8)

Two double glazed velux skylights, two double glazed windows to side, double glazed window to the rear, double opening French doors to the side to rear garden, feature open brick wall.











Utility 8'10" x 12'9" (2.7 x 3.9)

Double glazed door to front, double glazed window to rear, central heating radiator, double glazed window to rear, base units with space for washing machine, square top surface over, further base units and space for tumble dryer, double glazed obscured window to front, door into downstairs w.c.

Downstairs w.c.

Low level flush w.c. and wash hand basin with mixer tap.

First floor landing

Loft access, double glazed window to front, doors to two bedrooms and bathroom.

Bathroom

Double glazed obscured window to side, vertical central heating towel rail, vanity set with low level flush w.c., wash hand basin with mixer tap, P shaped bath with monsoon head over.

Bedroom one 16'4" x 10'9" (5.0 x 3.3)

Double glazed window to front, double glazed window to rear, central heating radiator, coving to ceiling, stair bulk head and door to storage cupboard.

Bedroom two 10'9" x 9'6" (3.3 x 2.9)

Double glazed window to rear, central heating radiator, coving to ceiling, fitted wardrobes with sliding doors.

Rear garden

Block paved patio, lawn, stone chipping area with stepping stones to the raised decked area and further garden area to the rear.

Tenure

References to the tenure of a property are based on information supplied by the seller. We are advised that the property is freehold. A buyer is advised to obtain verification from their solicitor.

Council Tax Banding

Tax Band is B

GROUND FLOOR



1ST FLOOR



While every attempt has been made to ensure the accuracy of the floorplan contained here, measurements of doors, windows, stairs and any other items are approximate and no responsibility is taken for any error, omission or mis-statement. This plan is for illustrative purposes only and should be used as such by any prospective purchaser. The services, systems and appliances shown here are not to be taken as a guarantee as to their operability or efficiency can be given.
Made with Metropix 10028

Money Laundering Regulations

In order to comply with Money Laundering Regulations, from June 2017, all prospective purchasers are required to provide the following - 1. Satisfactory photographic identification. 2. Proof of address/residency. 3. Verification of the source of purchase funds. All prospective purchasers will be required to undergo Anti-Money Laundering (AML) checks in accordance with current legislation. This may involve providing identification and financial information. It is our company policy to do digital enhanced checks through a third party and a fee will be payable for these checks." We will not be able to progress you offer until these checks have been carried out.

Referral Fees

We can confirm that if we are sourcing a quotation or quotations on your behalf relevant to the costs that you are likely to incur for the professional handling of the conveyancing process. You should be aware that we could receive a maximum referral fee of approximately £175 should you decide to proceed with the engagement of the solicitor in question. We are informed that solicitors are happy to pay this referral fee to ourselves as your agent as it significantly reduces the marketing costs that they have to allocate to sourcing new business. The referral fee is NOT added to the conveyancing charges that would ordinarily be quoted.

We can also confirm that if we have provided your details to Infinity Financial Advice who we are confident are well placed to provide you with the very best possible advice relevant to your borrowing requirements. You should be aware that we receive a referral fee from Infinity for recommending their services. The charges that you will incur with them and all the products that they introduce to you will in no way be affected by this referral fee. On average the referral fees that we have received recently are £218 per case.

The same also applies if we have introduced you to the services of our panel of surveyors who we are confident will provide you with a first class service relevant to your property needs. We will again receive a referral fee equivalent to 10% of the fee that

you pay capped at £200.00 This referral fee does not impact the actual fee that you would pay had you approached any of the panel of surveyors directly as it is paid to us as an intermediary on the basis that we save them significant marketing expenditure in so doing. If you have any queries regarding the above, please feel free to contact us.

IMPORTANT NOTICE 1. No description or information given whether or not these particulars and whether written or verbal (information) about the property or its value may be relied upon as a statement or representation of fact. Grove Properties Group do not have any authority to make representation and accordingly any information is entirely without responsibility on the part of Grove Properties Group or the seller. 2. The photographs (and artists impression) show only certain parts of the property at the time they were taken. Any areas, measurements or distance given are approximate only and interior measurements are wall to wall. 3. Any reference to alterations to, or use of any part of the property is not a statement that any necessary planning, building regulations or other consent has been obtained. 4. No statement is made about the condition of any service or equipment.