



12 Nortons Close, Northend

Southam

Guide Price **£300,000**





12 Nortons Close

Northend, Southam

Council Tax band: C

Tenure: Freehold

EPC Energy Efficiency Rating:

EPC Environmental Impact Rating:

- Extended three-bedroom semi-detached home
- Large south-facing garden
- Next to the Burton Dassett Hills
- Large open-plan kitchen and dining space
- Ample off-road parking



Living Room

14' 2" x 12' 8" (4.33m x 3.86m)

Kitchen / Diner

14' 11" x 17' 8" (4.54m x 5.39m)

Bathroom

5' 1" x 7' 10" (1.56m x 2.39m)

Master Bedroom

14' 3" x 9' 9" (4.34m x 2.97m)

En-suite

Bedroom 2

9' 5" x 10' 8" (2.87m x 3.25m)

Bedroom 3

8' 10" x 7' 9" (2.70m x 2.37m)





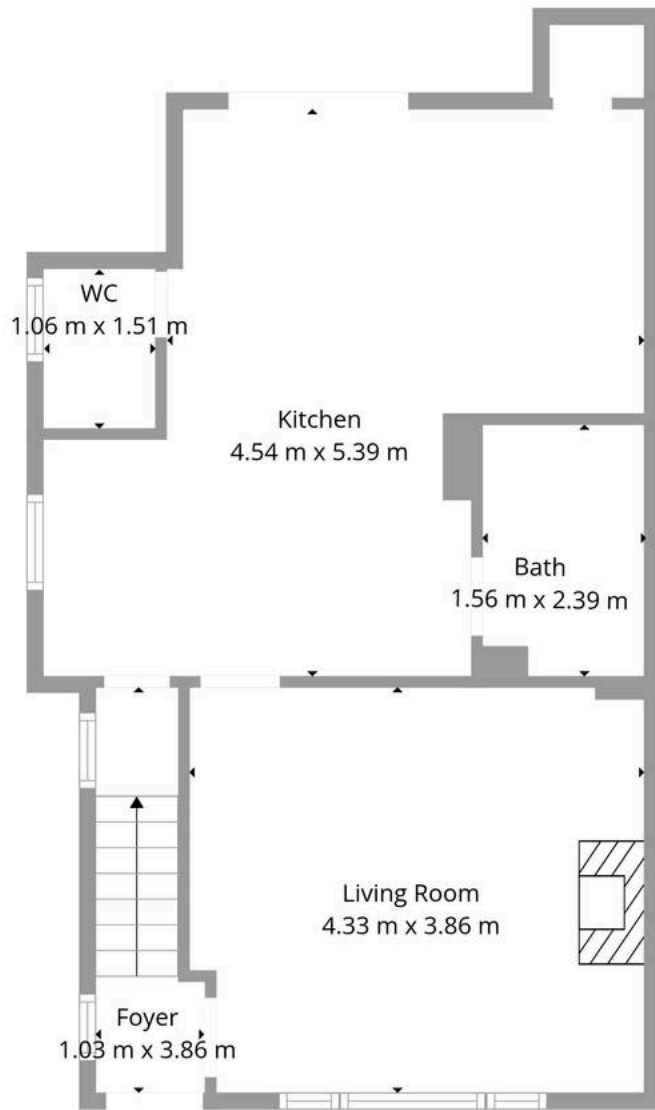
GARDEN

DRIVEWAY

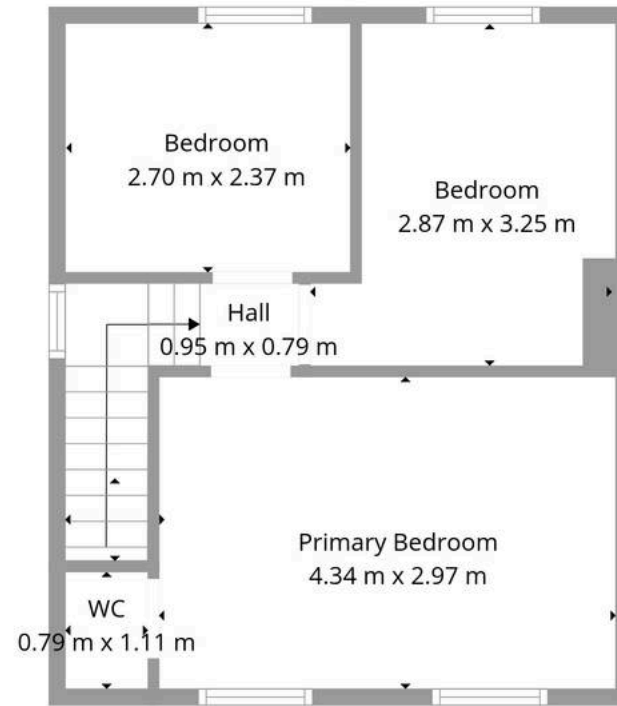
2 Parking Spaces







1st Floor



2nd Floor

TOTAL: 83 m²
 1st floor: 50 m², 2nd floor: 33 m²
 EXCLUDED AREAS: WALLS: 9 m²



Hawthorn and Co

16 Hereburgh Way, Harbury - CV33 9NR

01926 919553

hello@hawthornandco.co.uk

<http://www.hawthornandco.co.uk>

