



Flat 111, Aylesdene Court Osborne Road, Coventry – CV5 6SB
£145,000

Flat 111

Aylesdene Court Osborne Road, Coventry

Ground floor retirement apartment in Earlsdon with stunning lounge/diner, impressive kitchen, beautiful shower room, 2 bedrooms, communal garden, warden control, private parking, and no chain.

Council Tax band: B

Tenure: Leasehold

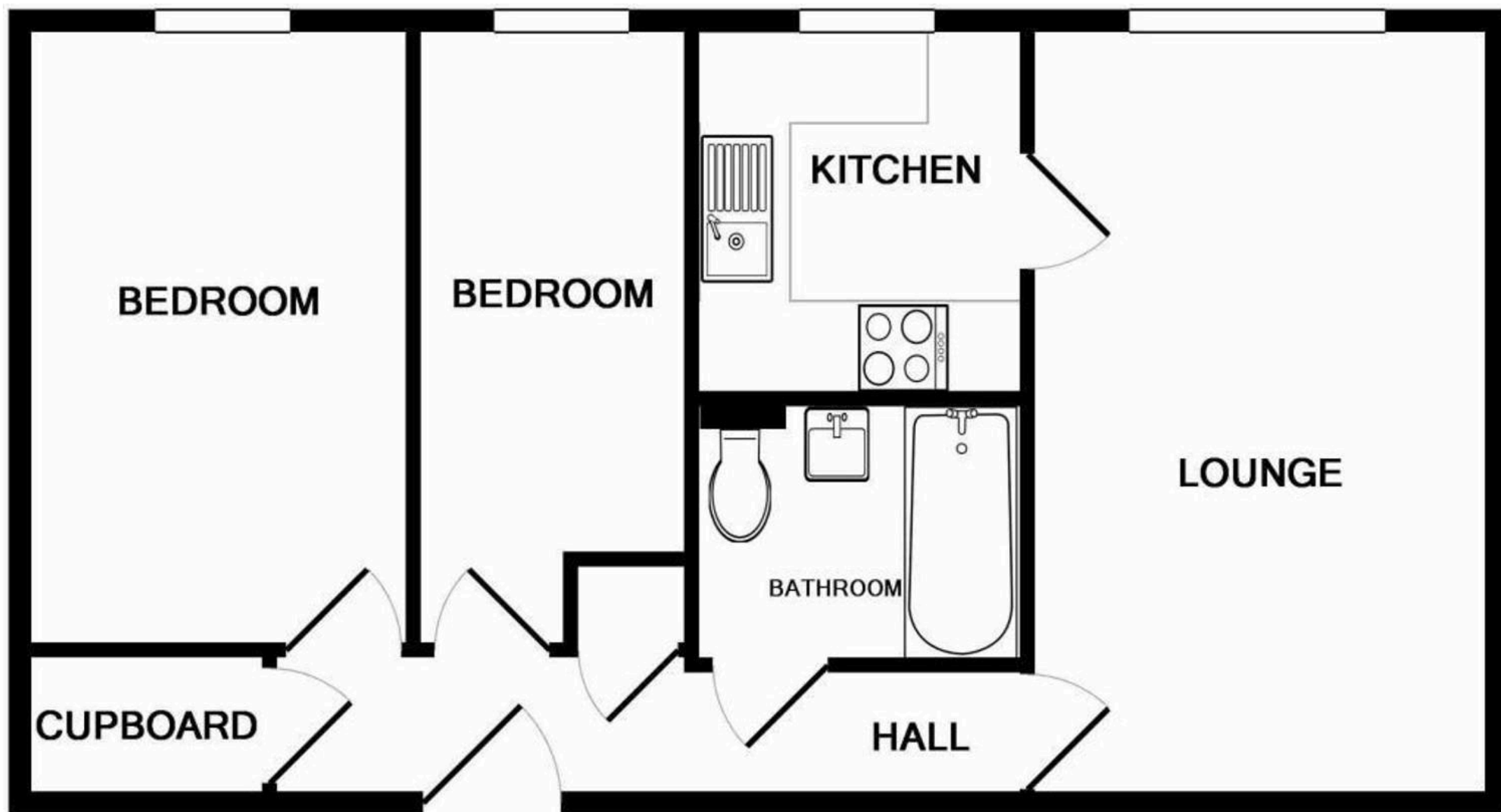
EPC Energy Efficiency Rating: E

EPC Environmental Impact Rating: F

- Absolutely Beautiful Ground Floor Retirement Apartment
- Set In The Heart Of Earlsdon
- Stunning Lounge / Diner
- Outstanding Kitchen
- Beautiful Shower Room
- 2 Bedrooms
- Delightful Communal Garden
- Warden Controlled
- Private Parking
- EPC TBC & No Chain







TOTAL APPROX FLOOR AREA 542 SQ FT (50.3 SQ M)
Made with Metropix ©2017