



12 Canon Hudson Close, Coventry - CV3 3HT

In Excess of £185,000

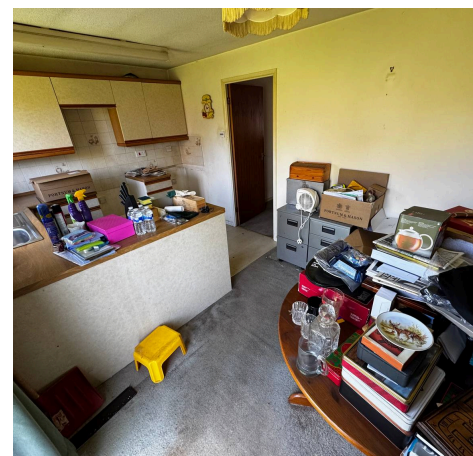
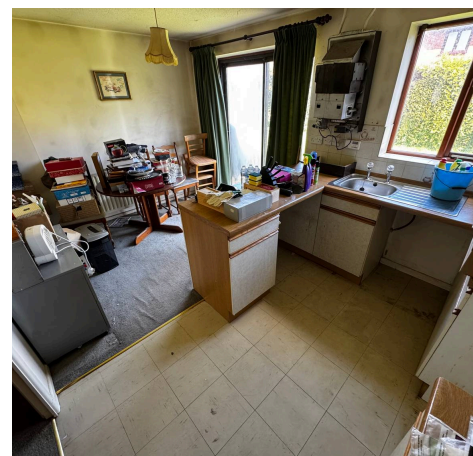
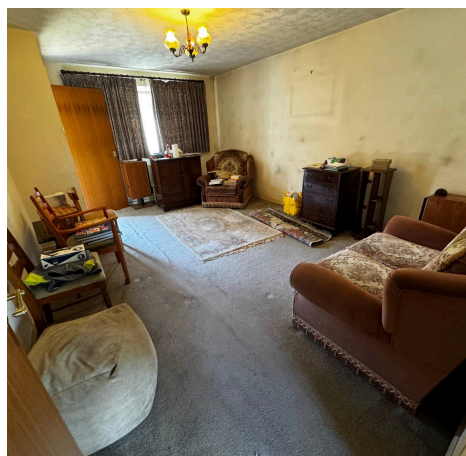
12 Canon Hudson Close

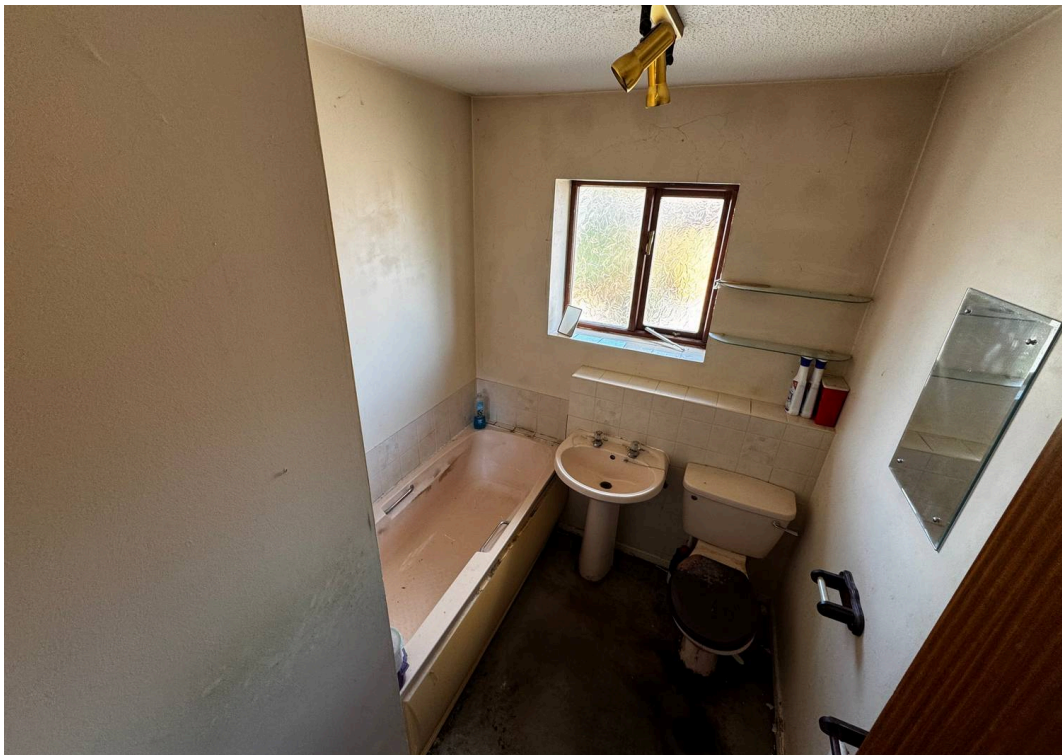
Coventry, Coventry

Detached three bedroom home needing modernisation. Spacious lounge, kitchen diner, drive, garage, no chain. Ideal for investors or first time buyers seeking a project. EPC to be confirmed. Council Tax band: B

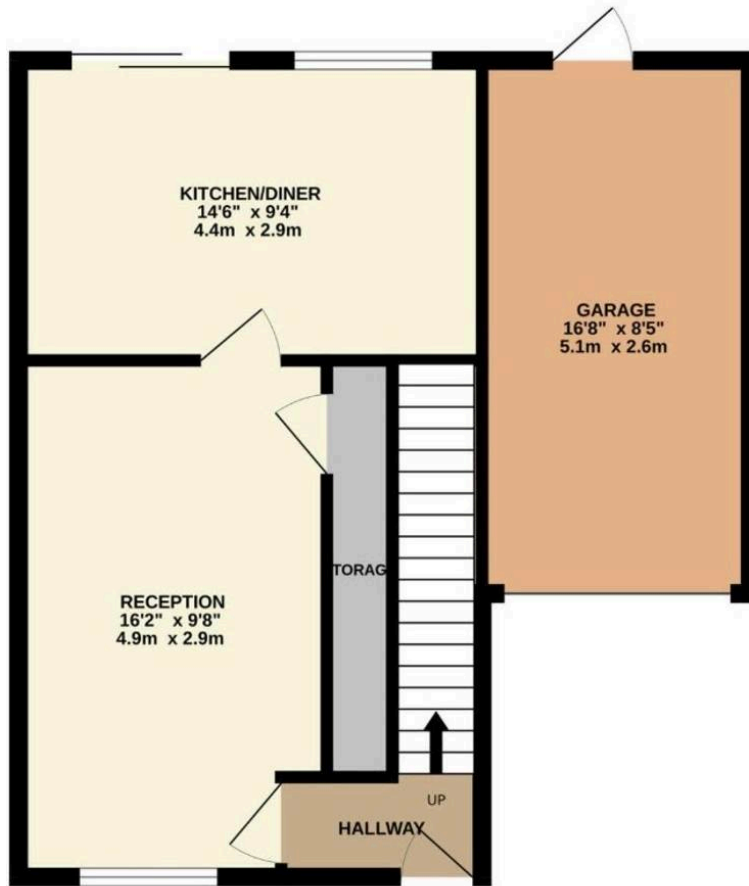
Tenure: Leasehold

- Attention investors & Savvy First Time Buyers
- Detached home
- 3 bedrooms
- Lounge
- Kitchen / diner
- Bathroom
- In need of modernisation
- Gardens to front, rear and side
- Drive and garage
- No chain - EPC TBC

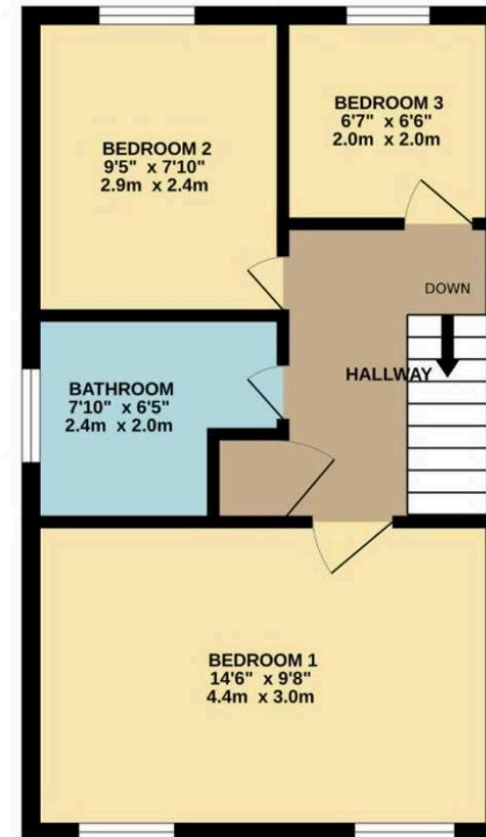




GROUND FLOOR
509 sq.ft. (47.3 sq.m.) approx.



1ST FLOOR
370 sq.ft. (34.3 sq.m.) approx.



TOTAL FLOOR AREA : 879 sq.ft. (81.6 sq.m.) approx.

Whilst every attempt has been made to ensure the accuracy of the floorplan contained here, measurements of doors, windows, rooms and any other items are approximate and no responsibility is taken for any error, omission or mis-statement. This plan is for illustrative purposes only and should be used as such by any prospective purchaser. The services, systems and appliances shown have not been tested and no guarantee as to their operability or efficiency can be given.
Made with Metroptx ©2024