



6 Broadway, Earlsdon – CV5 6NT
£320,000





6 Broadway

Earlsdon, Coventry

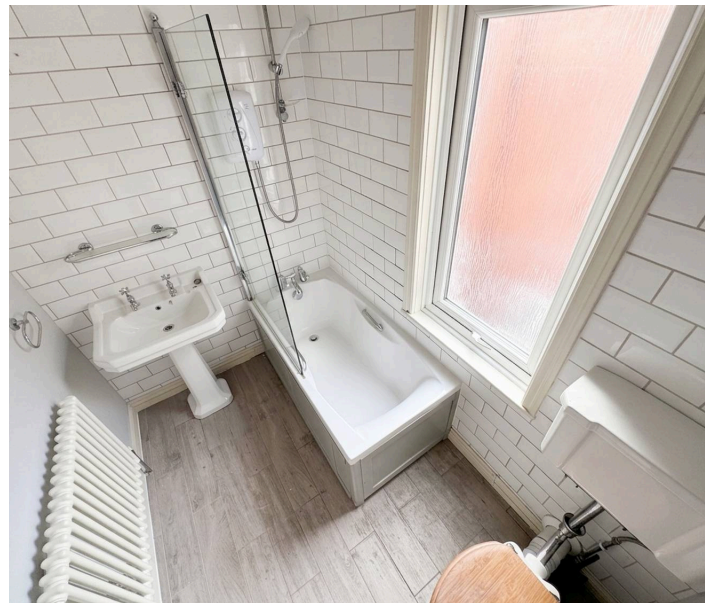
Superb three bedroom terrace near High Street and Memorial Park. Spacious lounge, modern kitchen, stylish bathroom. Gas heating, double glazing, no chain. EPC D. Ready to move in. Council Tax band: C

Tenure: Freehold

EPC Energy Efficiency Rating: D

EPC Environmental Impact Rating: E

- Superb Terraced Home
- Walking Distance To The Ever Popular High Street And The Memorial Park
- Superb Lounge / Diner
- Superb Fitted Kitchen / Diner
- Gardens To Front & Rear
- 3 Bedrooms
- Family Bathroom
- Gas Central Heating - Double Glazing
- No Chain
- EPC D

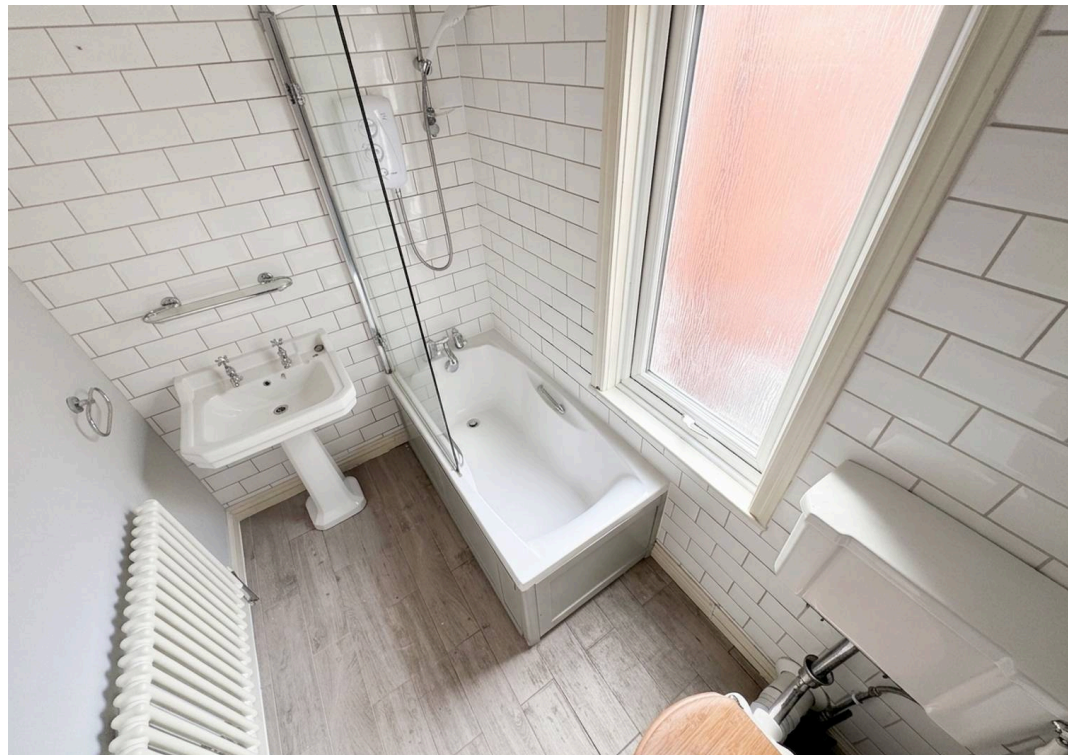


Contact us:

sales@williamsandshakespeare.co.uk

024 76 011 400

65 Earlsdon Street
Earlsdon
Coventry
CV5 6EL



Ground Floor



First Floor

