



Oxford Road

BANBURY, OX16

3 bedroom semi-detached house to rent in Banbury



Cherry Lets
Residential Lettings and Property Management

The Market Town



The popular market town of Banbury is famed for its Fine Lady and the Cross. Banbury has excellent facilities with a large shopping centre, good sporting facilities and a wide array of restaurants and public houses to suit all tastes.

Transport links are also excellent with a large bus depot and train station (London Marylebone 55 minutes; Birmingham 51 mins). Along with its close proximity to the M40, Banbury is excellent for commuting.

Location Location

Very spacious 3-bedroom period home in a prime location on the Oxford Road in Banbury.

Well presented and finished to a high standard! The property comes with a garage and a gated driveway with space for up to 3 cars.



Cherry Lets

Home Dining



The Kitchen/Breakfast Room is fitted with a good range of wall and base light wood units including breakfast bar; stainless steel electric oven and microwave with black induction hob with stainless steel chimney hood over.



There is also the Utility room and cloakroom downstairs.

A Place To Put The Feet Up



This stunning home has solid oak flooring and feature open fire to the downstairs Living Room which also opens onto the Dining Room/Conservatory.

There is also a separate Sitting Room – with feature fireplace (decorative only).

Gorgeous Gardens

There will be plenty of room for entertaining at this Oxford Road property. The beautiful mature gardens have a good sized lawn, well stocked borders and a large sunny patio. Garage is also accessible from both the front and rear gardens



Sweet Dreams

Upstairs are the three bedrooms and modern family bathroom with shower fitted over the bath.

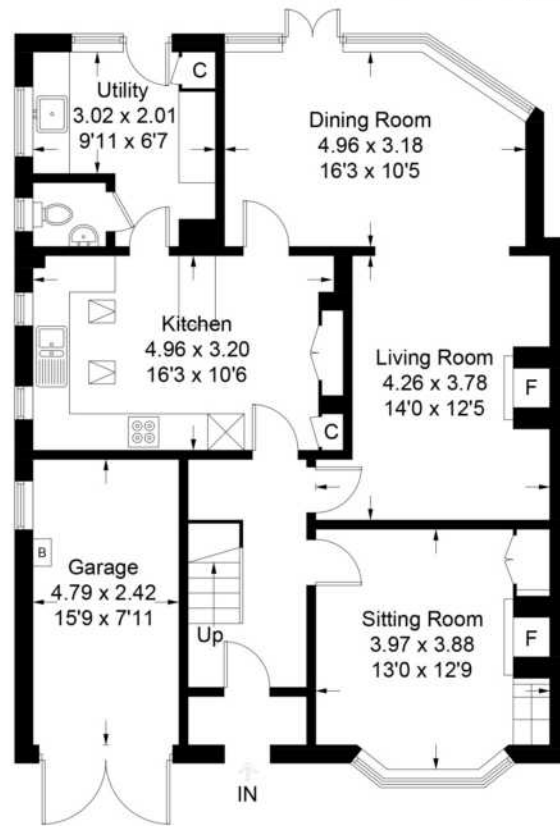
All rooms are neutrally decorated.



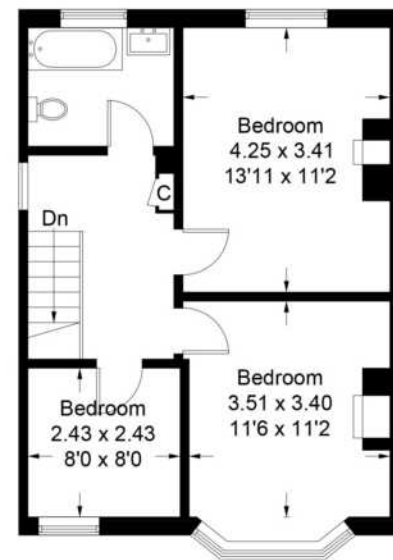
Floorplan

Oxford Road, Banbury

Approximate Gross Internal Area = 132 sq m / 1421 sq ft
Garage = 11.6 sq m / 125 sq ft
Total = 11.6 sq m / 1546 sq ft



Ground Floor



First Floor

Illustration for identification purposes only,
measurements are approximate, not to scale. (ID426239)



Cherry Lets

At Your Doorstep



Banbury Museum Trust
6 Minute Drive



Broughton Castle
8 Minute Drive



Spiceball Country Park
6 Minute Drive



Cherry Lets