

# BRUNTON

---

## RESIDENTIAL



**ALBURY ROAD, JESMOND, NE2**

**£2,708 Per Month**

# BRUNTON

---

## RESIDENTIAL





# BRUNTON

---

RESIDENTIAL



# BRUNTON

---

## RESIDENTIAL

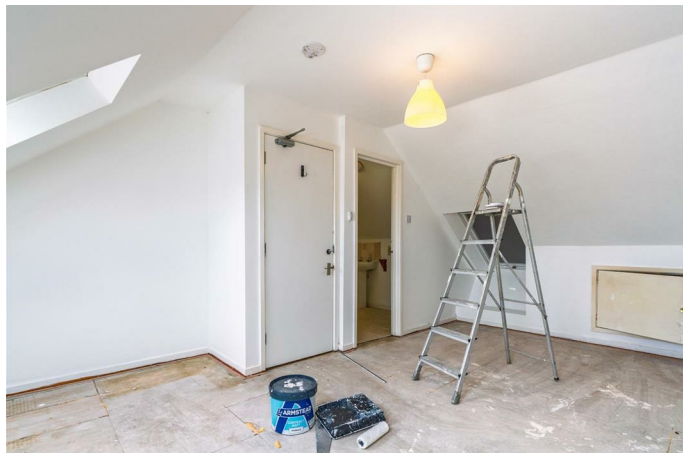


Available July 2026 - Rent £2,708pcm / £125pppw - 5 Bedroom With Extra Study Room - On Street Parking - Popular Location - New Furniture Being Added - Large Front Room Being Divided To Create An Additional Room - Call Today

# BRUNTON

---

## RESIDENTIAL



# BRUNTON

---

RESIDENTIAL

# BRUNTON

---

## RESIDENTIAL

TENURE :

LOCAL AUTHORITY : Newcastle-Upon-Tyne

COUNCIL TAX BAND : D

EPC RATING : D

