

# BRUNTON

---

RESIDENTIAL



**£137PPPW - BRANDON GROVE, SANDYFORD**

**£1,781 Per Month**

# BRUNTON

---

RESIDENTIAL





# BRUNTON

---

RESIDENTIAL



# BRUNTON

---

## RESIDENTIAL



**\*\*\*360 VIRTUAL TOUR\*\*\* - Available 14th August 2026 - Rent £137pppw / £1781pcm - Bills inclusive £30pppw - 3 double bed upper flat - Decorated to a high standard - Stunning property - Open plan living/dining/kitchen - High-end fitted kitchen - Modern bathroom - Rear Yard.**

**BRUNTON**

---

RESIDENTIAL

# BRUNTON

---

RESIDENTIAL

# BRUNTON

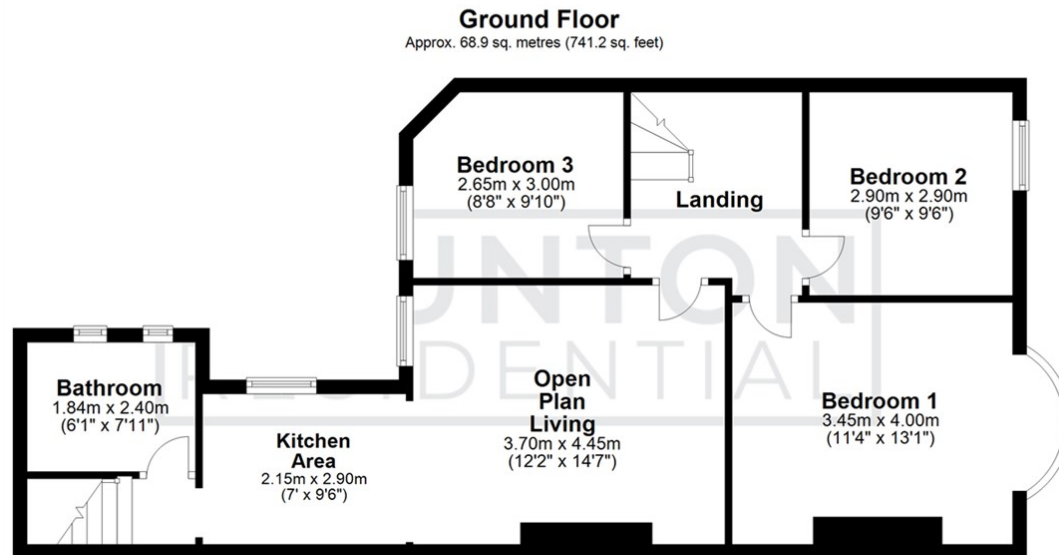
## RESIDENTIAL

TENURE :

LOCAL AUTHORITY :

COUNCIL TAX BAND :

EPC RATING : E



All measurements are approximate and are for illustration only.  
Plan produced using PlanUp.



| Energy Efficiency Rating                    |  | Current                 | Potential |
|---|--|-------------------------|-----------|
| Very energy efficient - lower running costs |  |                         |           |
| (92 plus) <b>A</b>                          |  |                         |           |
| (81-91) <b>B</b>                            |  |                         |           |
| (69-80) <b>C</b>                            |  |                         |           |
| (55-68) <b>D</b>                            |  |                         |           |
| (39-54) <b>E</b>                            |  |                         |           |
| (21-38) <b>F</b>                            |  |                         |           |
| (1-20) <b>G</b>                             |  |                         |           |
| Not energy efficient - higher running costs |  |                         |           |
|   |  | 54                      | 73        |
| England & Wales                             |  | EU Directive 2002/91/EC |           |

| Environmental Impact (CO <sub>2</sub> ) Rating                  |  | Current                 | Potential |
|---|--|-------------------------|-----------|
| Very environmentally friendly - lower CO <sub>2</sub> emissions |  |                         |           |
| (92 plus) <b>A</b>  |  |                         |           |
| (81-91) <b>B</b>  |  |                         |           |
| (69-80) <b>C</b>  |  |                         |           |
| (55-68) <b>D</b>  |  |                         |           |
| (39-54) <b>E</b>  |  |                         |           |
| (21-38) <b>F</b>  |  |                         |           |
| (1-20) <b>G</b>   |  |                         |           |
| Not environmentally friendly - higher CO <sub>2</sub> emissions |  |                         |           |
|   |  |                         |           |
| England & Wales   |  | EU Directive 2002/91/EC |           |