

BRUNTON

RESIDENTIAL



ELMWOOD PARK COURT, NEWCASTLE UPON TYNE

£1,150 PCM

BRUNTON

RESIDENTIAL





BRUNTON
RESIDENTIAL





***** 360 VIRTUAL TOUR *** - Available 21st May 2026- Rent £1,150pcm - Persimmon Seaton
build Townhouse - 3 Bedrooms - Family bathroom - Fitted kitchen with washer/dryer, dishwasher
and integrated oven and hob and Fridge freezer - Over 3 storeys - Rear garden with shed -
Allocated parking - Available on an unfurnished basis - Gas central heating - Easy access to A1 -
Call today for viewings.**

BRUNTON

RESIDENTIAL



BRUNTON

RESIDENTIAL

Brunton residential are delighted to offer this three-bedroom townhouse located on Elmwood Park Court in Great Park. The accommodation briefly comprises of; an entrance hall, lounge, kitchen/diner with washer/dryer, dishwasher and an integral oven and hob. French doors with access to rear gardens & a WC.

The first floor consists of two bedrooms of equal size, both would fit a double bed with furniture while a family bathroom is in between. The top floor boasts a large main bedroom with a cupboard from the landing.

Externally there are gardens to the front and rear while a driveway provides off-street parking.

Great Park is situated to the North of Newcastle and offers easy access North and South via the A1, Newcastle City Centre, Newcastle Airport and Newcastle Racecourse.

For more info and to book viewings, please call our Great Park team on 0191 2368347.



BRUNTON

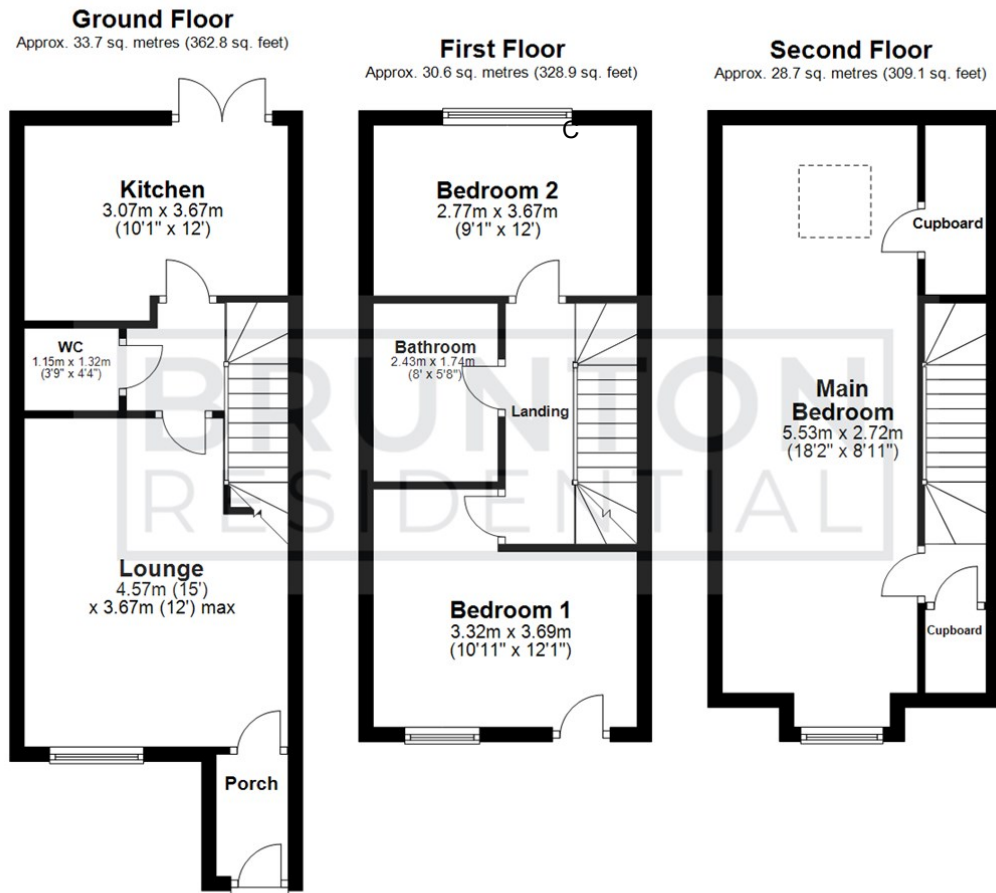
RESIDENTIAL

TENURE :

LOCAL AUTHORITY : Newcastle City Council

COUNCIL TAX BAND : C

EPC RATING : C



All measurements are approximate and are for illustration only.
Plan produced using PlanUp.

