

# BRUNTON

---

RESIDENTIAL



**£142.50PPW - HAZELWOOD AVENUE, NEWCASTLE UPON TYNE**

**£3,715 Per Month**

# BRUNTON

---

## RESIDENTIAL



# BRUNTON RESIDENTIAL

## TO LET

[bruntonresidential.com](http://bruntonresidential.com) | 0191 236 8347



# BRUNTON

---

RESIDENTIAL



# BRUNTON

---

## RESIDENTIAL



Available 17/08/26- Rent £142.50pppw / £3715.18pcm / £22pppw bills inclusive - 6-double bed - Large Maisonette - Double bedrooms - Very popular location - Call now to avoid disappointment

# BRUNTON

---

## RESIDENTIAL



# BRUNTON

---

## RESIDENTIAL



# BRUNTON

## RESIDENTIAL

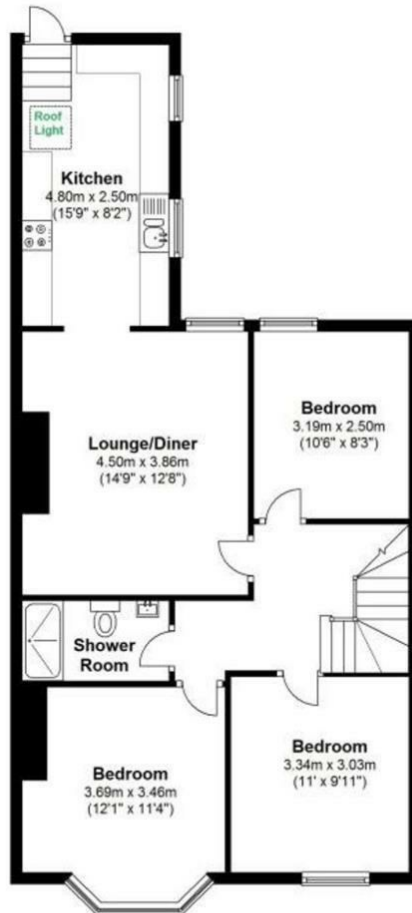
TENURE :

LOCAL AUTHORITY : Newcastle

COUNCIL TAX BAND : B

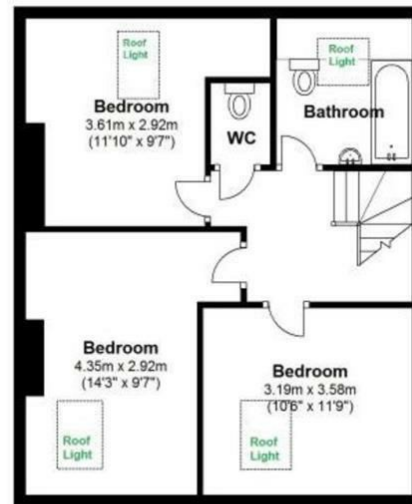
EPC RATING : D

### 58 Hazelwood avenue, Jesmond

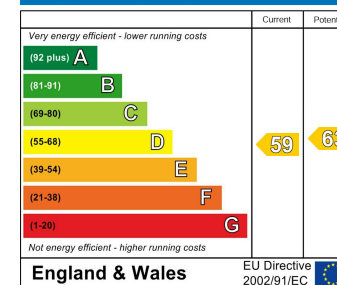


First Floor Plan

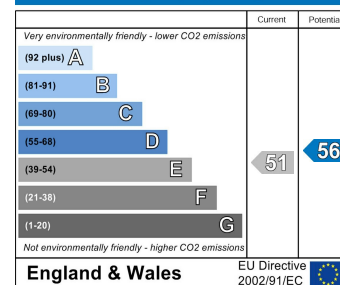
### Second Floor Plan



#### Energy Efficiency Rating



#### Environmental Impact (CO<sub>2</sub>) Rating



England & Wales

England & Wales