

# BRUNTON

---

RESIDENTIAL



**£170PPPW - JESMOND ROAD, JESMOND NE2**

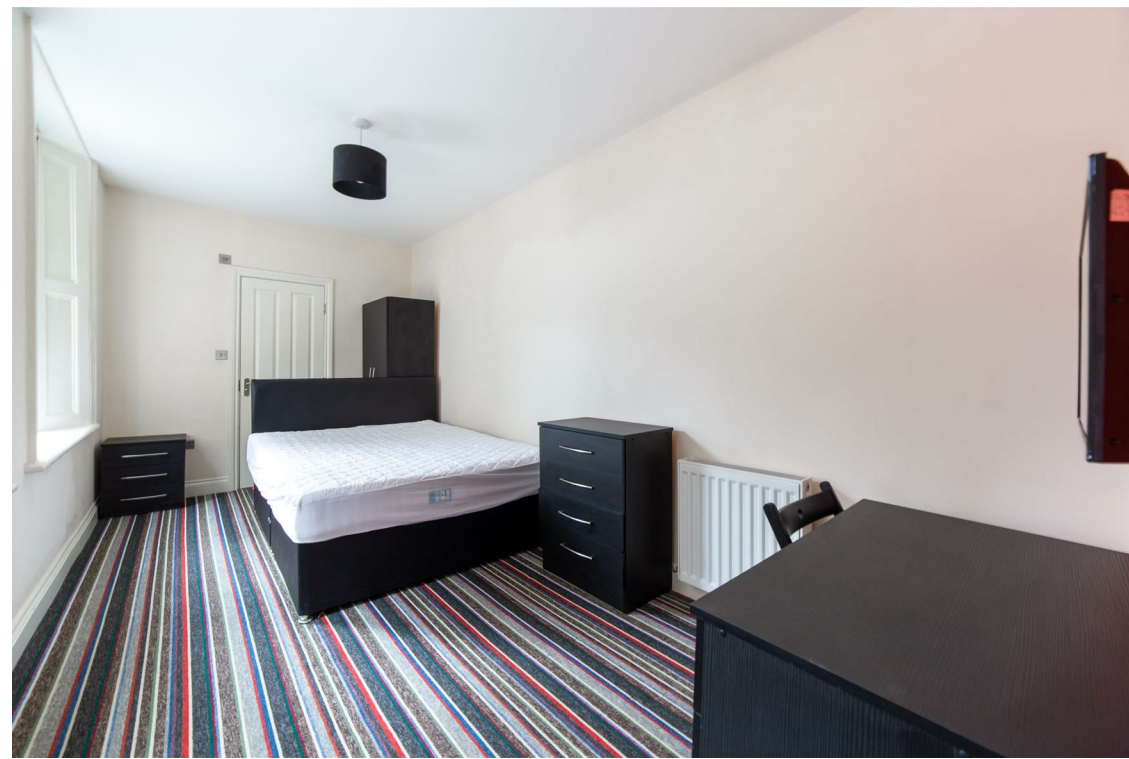
**£1,473 Per Month**

# BRUNTON

---

RESIDENTIAL





**BRUNTON**  
RESIDENTIAL



A photograph of a modern interior hallway. On the left, a white door is partially open. In the center, a staircase with grey carpeting and white balustrade leads upwards. The walls are white, and there are two framed artworks: one of a blue sky and another of a purple figure. A light fixture is mounted on the wall to the left. On the right, a white door with a large frosted glass panel is visible. The glass panel has the text 'no. 87' printed on it in a light, stylized font. The overall atmosphere is bright and clean.

# BRUNTON

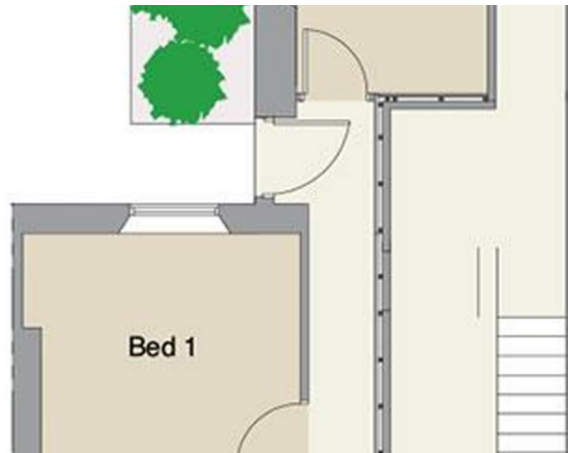
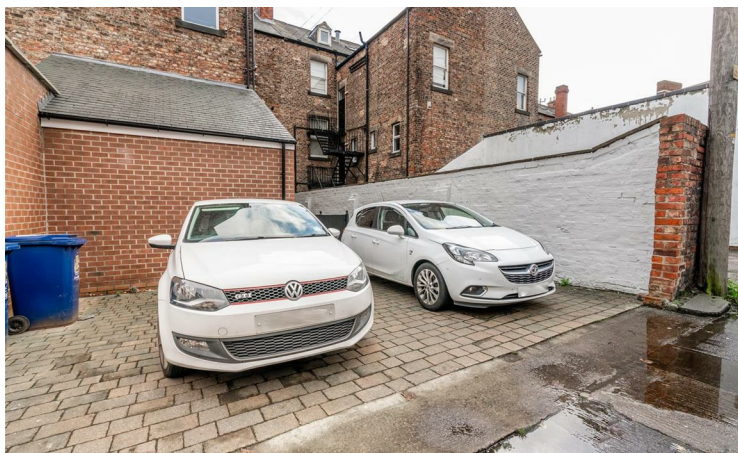
## RESIDENTIAL

**\*\*360 Virtual Tour\*\* Available 6th July 2026 - £170pppw / £1,473.33pcm - £38pppw Bills  
Inclusive - Ground Floor Apartment - 2 Double Bedrooms - 2 Bathrooms - High Standard Fixtures  
& Fittings - Close to Both Uni's - Fantastic Student Location - Must Be Seen – Furnished**

# BRUNTON

---

## RESIDENTIAL



# BRUNTON

---

RESIDENTIAL

# BRUNTON

## RESIDENTIAL



TENURE :

LOCAL AUTHORITY : Newcastle City Council

COUNCIL TAX BAND : B

EPC RATING : D



Energy Efficiency Rating		Current	Potential
Very energy efficient - lower running costs			
(92 plus) <b>A</b>			
(81-91) <b>B</b>			
(69-80) <b>C</b>			
(55-68) <b>D</b>		59	68
(39-54) <b>E</b>			
(21-38) <b>F</b>			
(1-20) <b>G</b>			
Not energy efficient - higher running costs			
England & Wales		EU Directive 2002/91/EC	

Environmental Impact (CO <sub>2</sub> ) Rating		Current	Potential
Very environmentally friendly - lower CO <sub>2</sub> emissions			
(92 plus) <b>A</b>			
(81-91) <b>B</b>			
(69-80) <b>C</b>			
(55-68) <b>D</b>			
(39-54) <b>E</b>			
(21-38) <b>F</b>			
(1-20) <b>G</b>			
Not environmentally friendly - higher CO <sub>2</sub> emissions			
England & Wales		EU Directive 2002/91/EC	