

BRUNTON

RESIDENTIAL



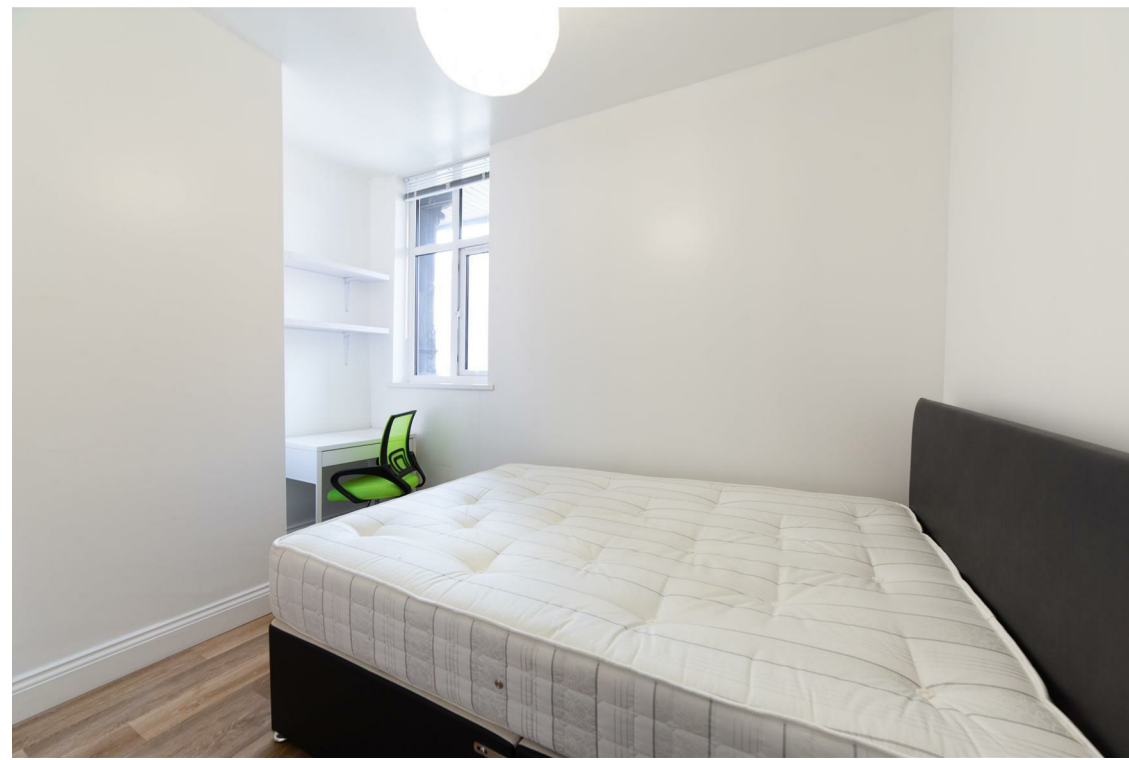
£150PPPW - QUEENS ROAD, JESMOND, NEWCASTLE UPON TYNE

£2,600 Per Month

BRUNTON

RESIDENTIAL





BRUNTON

RESIDENTIAL



BRUNTON

RESIDENTIAL



360 VIRTUAL TOUR - Available 02/09/2026 Rent £150pppw / £2,600pcm - Fantastic new refurbishment - 4 double bedrooms - 3 Bathrooms - £26pppw extra for bills inclusive - Call to arrange viewings -

BRUNTON

RESIDENTIAL



BRUNTON

RESIDENTIAL

BRUNTON

RESIDENTIAL

TENURE :

LOCAL AUTHORITY :

COUNCIL TAX BAND :

EPC RATING : D

