

BRUNTON

RESIDENTIAL



LANESBOROUGH COURT, GOSFORTH, NE3

£1,400 Per Month

BRUNTON

RESIDENTIAL





BRUNTON

RESIDENTIAL



BRUNTON

RESIDENTIAL



*****360 VIRTUAL TOUR*** - Available 05/05/2026 - Rent £1,400pcm - 6 Month Tenancy Only -
Three Bedrooms - Modern End Terraced House - Secure Gated Development - Fantastic Location -
Kitchen Diner - Separate Utility / WC - Rear Garden - Ensuite Master Bedroom - Furnished -
Allocated Parking For Two Cars.**

BRUNTON

RESIDENTIAL



BRUNTON

RESIDENTIAL



BRUNTON

RESIDENTIAL

TENURE :

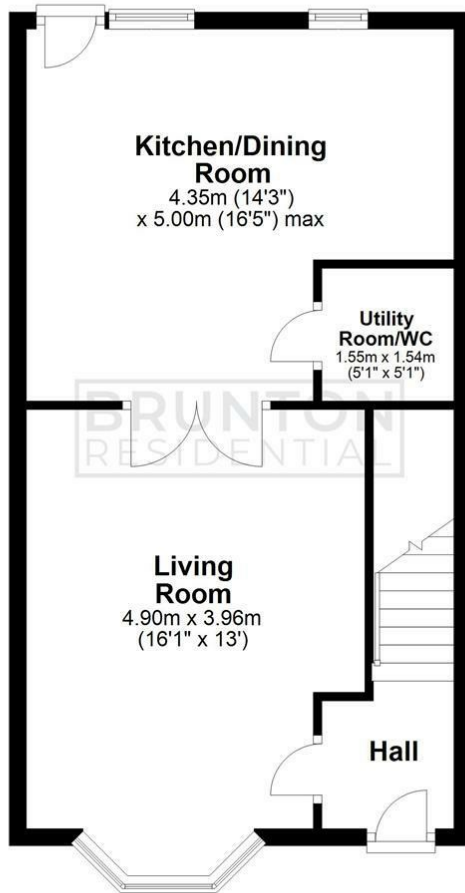
LOCAL AUTHORITY : Newcastle

COUNCIL TAX BAND : D

EPC RATING : C

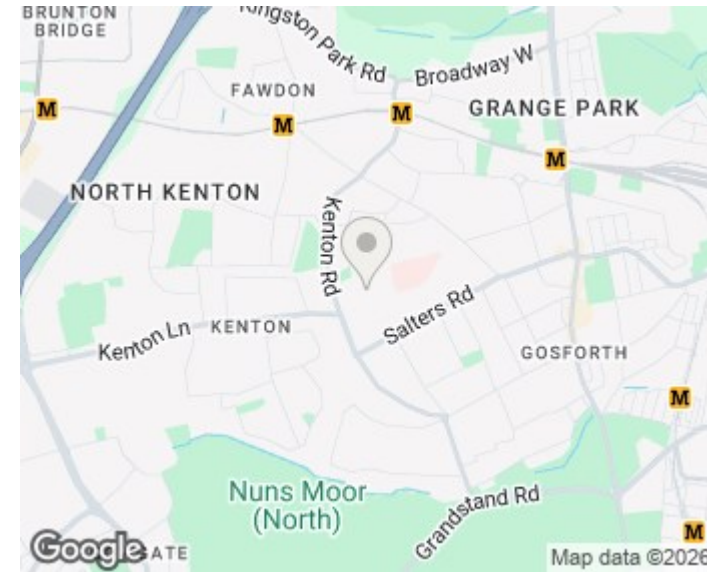
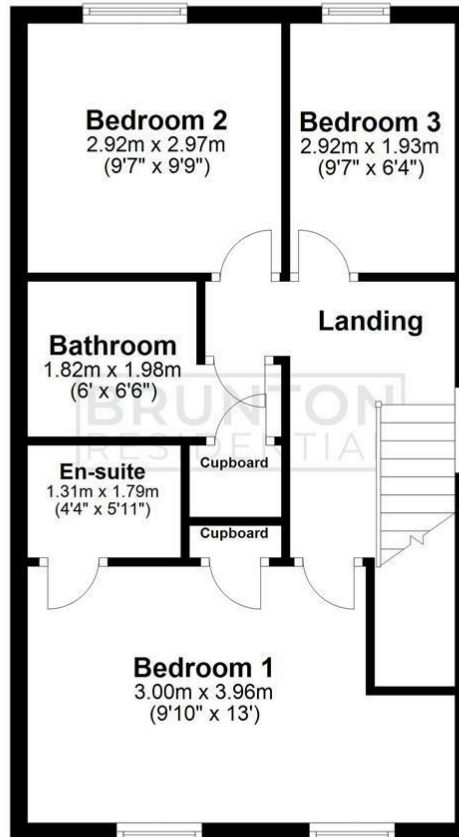
Ground Floor

Approx. 47.0 sq. metres (506.2 sq. feet)



First Floor

Approx. 46.8 sq. metres (503.3 sq. feet)



All measurements are approximate and are for illustration only.
Plan produced using PlanUp.

Energy Efficiency Rating		Current	Potential
Very energy efficient - lower running costs			
(92 plus) A			87
(81-91) B			
(69-80) C		74	
(55-68) D			
(39-54) E			
(21-38) F			
(1-20) G			
Not energy efficient - higher running costs			
England & Wales		EU Directive 2002/91/EC	

Environmental Impact (CO ₂) Rating		Current	Potential
Very environmentally friendly - lower CO ₂ emissions			
(92 plus) A			
(81-91) B			
(69-80) C			
(55-68) D			
(39-54) E			
(21-38) F			
(1-20) G			
Not environmentally friendly - higher CO ₂ emissions			
England & Wales		EU Directive 2002/91/EC	