

BRUNTON

RESIDENTIAL



£160PPPW - HOLLY AVENUE, JESMOND, NE2

£2,773 Per Month

BRUNTON

RESIDENTIAL





BRUNTON

RESIDENTIAL



BRUNTON

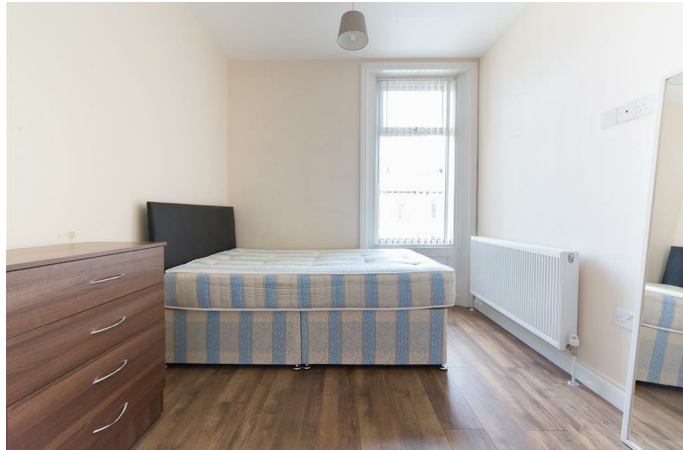
RESIDENTIAL



***** 360 VIRTUAL TOUR *** - Available 1st September 2026 - £160pppw / £2,773pcm - £26pppw
Bills Inclusive - Four Double Bedroom Maisonette - Three Bathrooms (2 En-Suite) - Great Location
Close to the Bars & Restaurants on Osborne Road - Popular Jesmond Student Location - Must Be
Seen – Furnished**

BRUNTON

RESIDENTIAL



BRUNTON

RESIDENTIAL



BRUNTON

RESIDENTIAL

TENURE :

LOCAL AUTHORITY :

COUNCIL TAX BAND :

EPC RATING : D

