

# BRUNTON

---

## RESIDENTIAL



**£110PPPW - BOLINGBROKE STREET, HEATON, NE6**

**£1,906 Per Month**

# BRUNTON

---

## RESIDENTIAL





# BRUNTON

---

RESIDENTIAL



# BRUNTON

---

## RESIDENTIAL

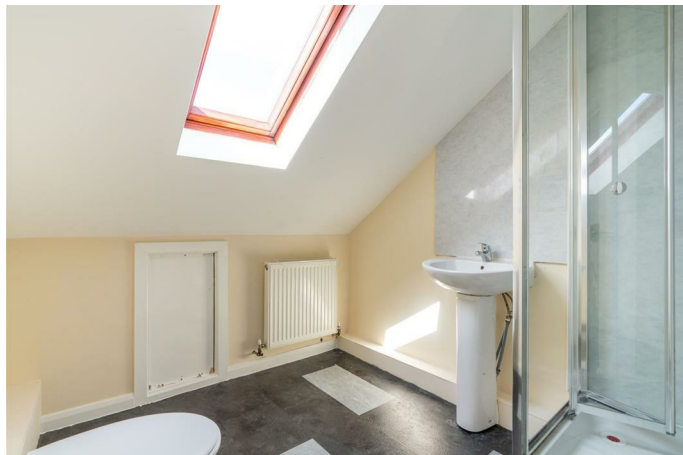


**\*\*Walk Through Video\*\* Available 1st July 2026 - Rent £110pppw - Bills Inclusive Packages Available - Four double bedrooms - Additional home office / Guest room - Shared Rear yard divided by fence - On-street parking - Easy walking distance to the city centre - Very popular property offering great size, location and value for money**

# BRUNTON

---

## RESIDENTIAL



# BRUNTON

---

RESIDENTIAL

# BRUNTON

---

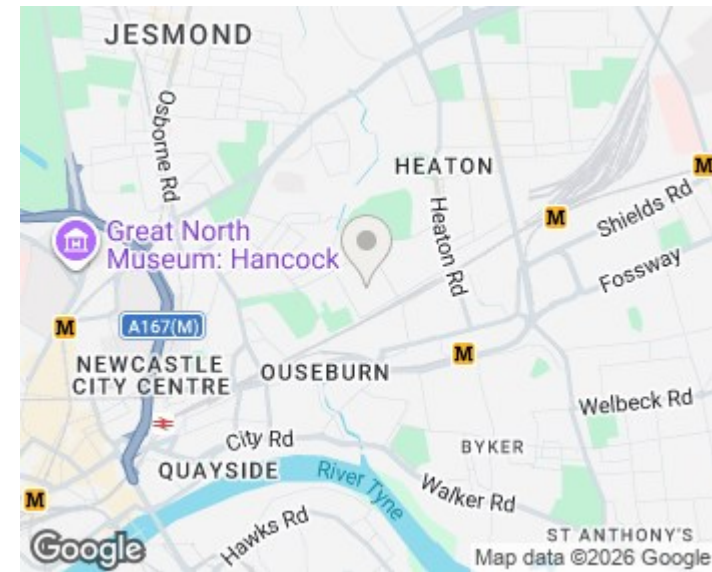
## RESIDENTIAL

TENURE :

LOCAL AUTHORITY :

COUNCIL TAX BAND : A

EPC RATING :



Energy Efficiency Rating		Current	Potential
<i>Very energy efficient - lower running costs</i>			
(92 plus) <b>A</b>			
(81-91) <b>B</b>			
(69-80) <b>C</b>			
(55-68) <b>D</b>			
(39-54) <b>E</b>			
(21-38) <b>F</b>			
(1-20) <b>G</b>			
<i>Not energy efficient - higher running costs</i>			
England & Wales		EU Directive 2002/91/EC	

Environmental Impact (CO <sub>2</sub> ) Rating		Current	Potential
<i>Very environmentally friendly - lower CO<sub>2</sub> emissions</i>			
(92 plus) <b>A</b>			
(81-91) <b>B</b>			
(69-80) <b>C</b>			
(55-68) <b>D</b>			
(39-54) <b>E</b>			
(21-38) <b>F</b>			
(1-20) <b>G</b>			
<i>Not environmentally friendly - higher CO<sub>2</sub> emissions</i>			
England & Wales		EU Directive 2002/91/EC	