

BRUNTON

RESIDENTIAL



OSBORNE AVENUE, JESMOND, NEWCASTLE UPON TYNE

£5,850 Per Month

BRUNTON

RESIDENTIAL





BRUNTON

RESIDENTIAL



BRUNTON

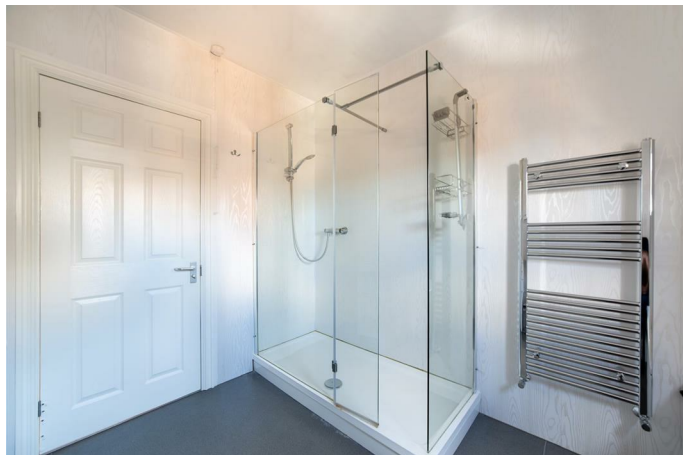
RESIDENTIAL



*****360 VIRTUAL TOUR*** - Available 6th August 2026 - £5,850.00 PCM - £150pppw - £19pppw
Bills Inclusive - 9 Double Bedrooms - 2 bathrooms - 1 En-suite - High Standard Fixtures & Fittings
- Close to Both Uni's - Popular Student Location - Must Be Seen – Furnished**

BRUNTON

RESIDENTIAL



BRUNTON

RESIDENTIAL



BRUNTON

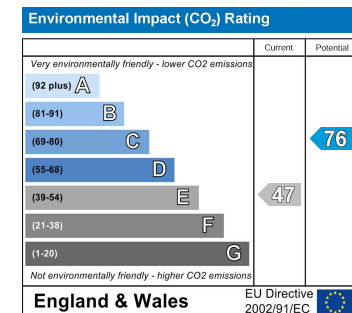
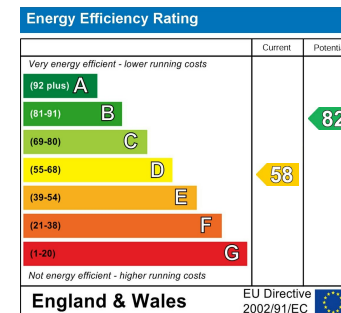
RESIDENTIAL

TENURE :

LOCAL AUTHORITY :

COUNCIL TAX BAND :

EPC RATING : D



England & Wales

England & Wales