



Rhodfa Logan, Rhyl - LL18 4FA

£215,000 Freehold

With **no onward chain**, this beautifully presented three-bedroom detached home offers modern, move-in ready living on a sought-after residential development in Rhyl.

SIMPLY ESTATES

Step inside to a welcoming hallway leading to a spacious lounge filled with natural light from the bay window and French doors that open out to the garden. The heart of the home is the stylish kitchen diner, featuring sleek gloss units, integrated appliances, and plenty of space for family meals. The stylish kitchen diner features sleek gloss units, integrated appliances, and ample space for family meals. Upstairs, the main bedroom benefits from fitted wardrobes and a contemporary en suite, with two further bedrooms and a modern family bathroom completing the layout.

Outside, a generous driveway provides ample off-road parking, while the enclosed rear garden offers a lawn and patio area, perfect for outdoor dining and play. Ideally located close to schools, local shops and commuter links, this home combines comfort, convenience and modern style.

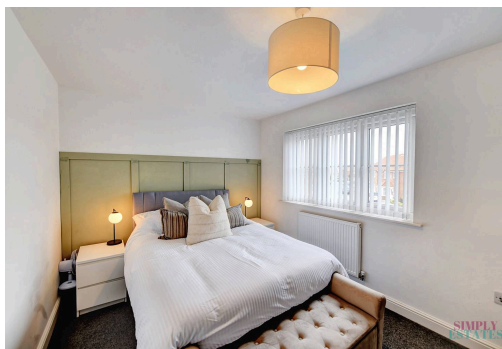


Inside

Well maintained and tastefully decorated, the interior feels bright, welcoming and well balanced. The layout flows effortlessly between living spaces, enhanced by modern finishes, quality flooring and neutral décor. Upstairs, each bedroom is thoughtfully designed to maximise space and comfort, complemented by stylish bathrooms and a calm, contemporary aesthetic throughout.

Outside

The exterior offers great kerb appeal and practicality, with a neatly kept frontage and driveway parking for multiple vehicles. The enclosed rear garden provides both a patio for entertaining and a well-kept lawn, a versatile outdoor space ideal for relaxing, socialising or family time.

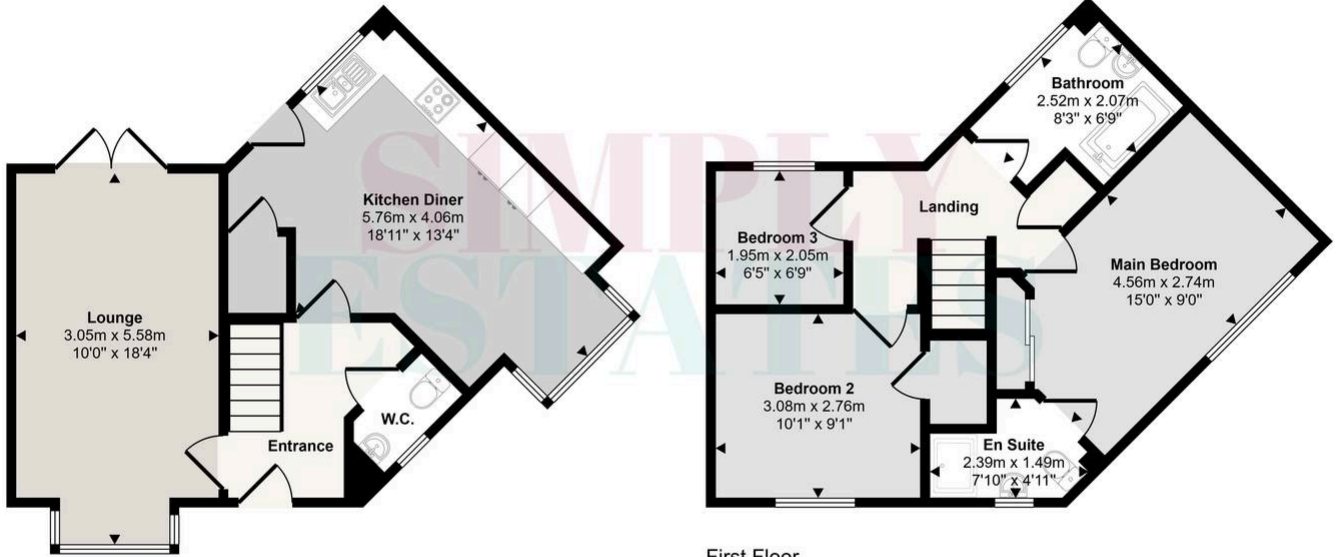


- › No Onward Chain
- › Modern Open Plan Kitchen and Dining
- › Spacious Lounge
- › Driveway Parking
- › Built-in Bedroom Storage
- › Contemporary Bathrooms
- › Popular Residential Location Close to Schools and Amenities
- › Patio area tiles available for finishing off
- › Council Tax band: C
- › Tenure: Freehold
- › EPC Energy Efficiency Rating: B

Rhodfa Logan is set within a highly desirable modern development in Rhyl, offering a peaceful setting while remaining close to everyday conveniences. Families will appreciate the proximity to well-regarded primary and secondary schools, while nearby parks and coastal walks provide plenty of outdoor space to enjoy.



Approx Gross Internal Area
87 sq m / 936 sq ft



Ground Floor
Approx 44 sq m / 474 sq ft

First Floor
Approx 43 sq m / 462 sq ft

This floorplan is only for illustrative purposes and is not to scale. Measurements of rooms, doors, windows, and any items are approximate and no responsibility is taken for any error, omission or mis-statement. Icons of items such as bathroom suites are representations only and may not look like the real items. Made with Made Snappy 360.

You can include any text here. The text can be modified upon generating your brochure.

Our Team



Making Your Property Journey Personal

Choose Simply Estates for all your buying and selling needs and experience the difference of a family run business that truly cares. With our personalised service and deep local knowledge, we offer insights that only come from being part of the community. Our customer-focused approach ensures that you're supported every step of the way because we understand that buying or selling a home is one of life's most significant milestones. Trust Simply Estates to guide you through the process with care, expertise, and a commitment to making your property journey as smooth and successful as possible.



↪ find out what your property is worth

SIMPLY ESTATES