



 **REMAX**
CLYDESDALE

The Hollies, Thankerton
Offers Over £284,000 EPC Rating E

The Hollies

Thankerton

Set within almost half an acre at the foot of Tinto Hill, the Hollies is a deceptively spacious, four bedroom detached home with beautiful open countryside views whilst only being a short drive to either Lanark or Biggar.

The property is entered from the front into a spacious entrance hallway. The lounge is generous in size with a large bay window providing excellent natural light and an open fireplace provides an attractive focal point to the room. The dining kitchen is brand new and offers a stylish selection of base and wall mounted storage with integrated electric oven and hob. In addition to the kitchen there is a handy utility room also brand new with additional cloaks store cupboard. The ground floor is completed by a W.C shower room and two double bedrooms.

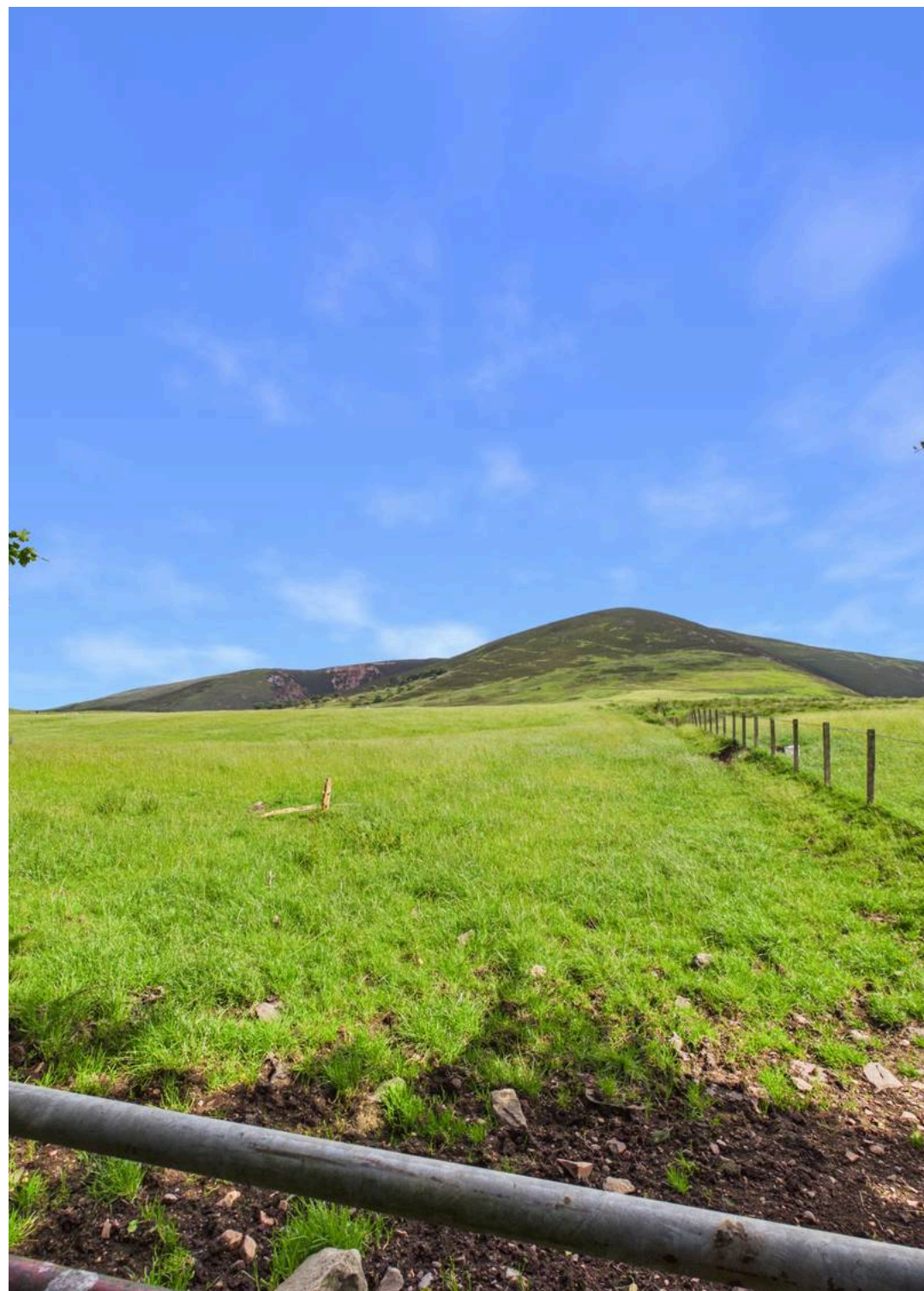
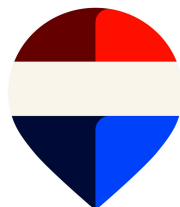
On the first floor there are an additional two bedrooms and a second shower room with W.C.

Externally the property has lovely garden grounds which are a mix of lawn with mature borders and woodland. A large driveway to the side and rear provides ample private parking and gives access to a large double garage.

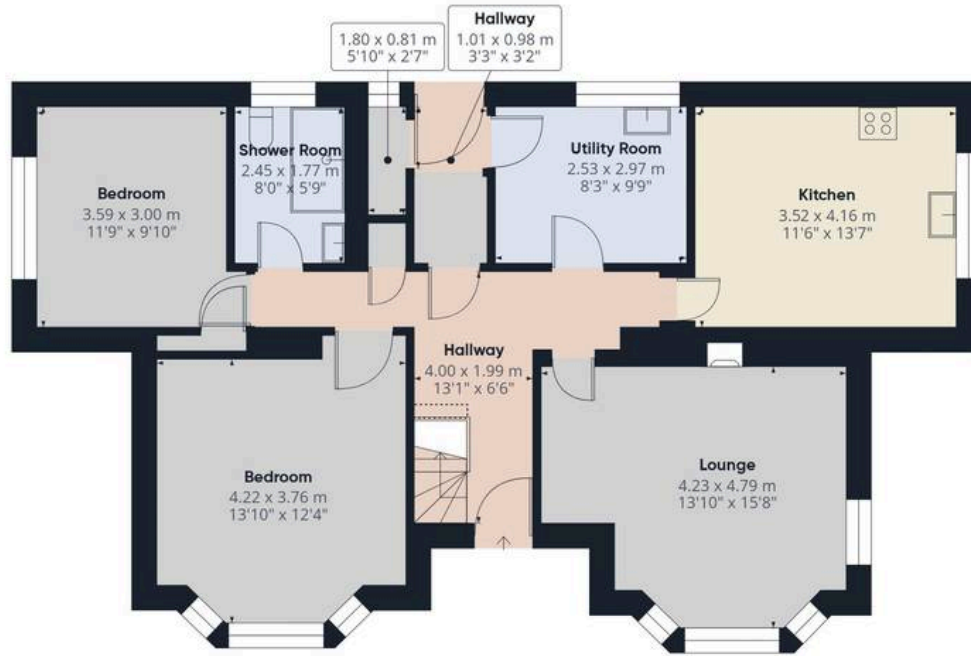
In addition to the recent remodelling of the kitchen the property also underwent significant upgrading of the electrics and the property has been newly decorated throughout.

This home sits within a stunningly beautiful rural location which has to be viewed in person to be fully appreciated.

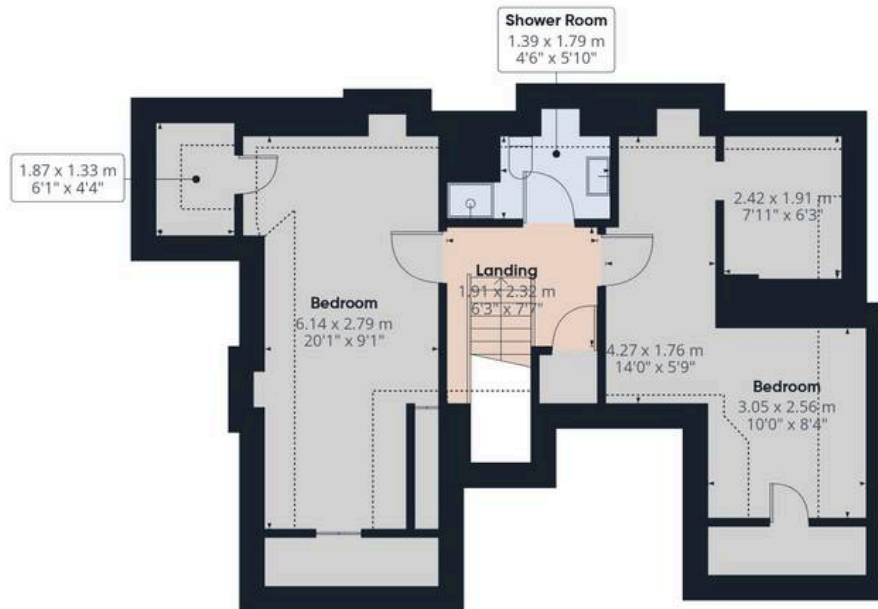
- Detached Home
- Four Bedrooms
- Beautiful Open Countryside Views
- Large Driveway
- Double Garage







Floor 0 Building 1



Floor 1 Building 1

Approximate total area⁽¹⁾

141.3 m²

1523 ft²

Reduced headroom

12.7 m²

136 ft²

(1) Excluding balconies and terraces

Reduced headroom

----- Below 1.5 m/5 ft

Calculations reference the RICS IPMS 3C standard. Measurements are approximate and not to scale. This floor plan is intended for illustration only.

GIRAFFE360





REMAX Clydesdale

REMAX, 2 High Street, Lanark, ML11 7EX

01555 666990

lanark@remax-scotland.homes

www.remax-scotland.homes/estate-agents/clydesdale

These particulars are prepared by us on the basis of information provided by our clients. We have not tested the electrical system, appliances or heating system. All sizes are recorded by laser to give an indicative, approximate size only. Prospective purchasers should make their own enquiries, no warranty is given or implied. This schedule is not intended to, and does not form any contract. Anti-Money Laundering Regulations - Purchasers will be asked to produce identification documentation at a later stage and we would ask for your co-operation in order that there will be no delay in agreeing the sale. NOTING INTEREST If you are interested in this property please ask your solicitor to notify us. This is referred to as "noting interest" and will ensure that you are informed of any