



- Various Commercial Units Available
- Flexible lease terms to be negotiated to suit your business needs
- Prime locations with easy access to major transportation routes
- Competitive rental rates
- Secure site with electric gated entry
- Ideal for startups, expanding businesses and established enterprises
- 50 sqm - 200 sqm
- 20 ft shipping storage containers

Contact for more information

UNIT 5A BLACKWOOD PIG FARM

SELBY, YO8 5DB

£600

Welcome to Blackwood on the outskirts of the charming village of North Duffield, Selby! This industrial unit offers a fantastic opportunity for those seeking a commercial property.

With plenty of space, this unit provides ample room for various business ventures. The inclusion of three-phase electricity ensures that your operations will run smoothly and efficiently. Additionally, the roller shutter door adds convenience and security to the property.

Situated in the heart of North Duffield, you'll be surrounded by the countryside while still being within reach of essential amenities. Whether you're looking to establish a new business or expand an existing one, this industrial unit offers great potential.

Don't miss out on the chance to make this property your own and take your business to new heights at Blackwood!

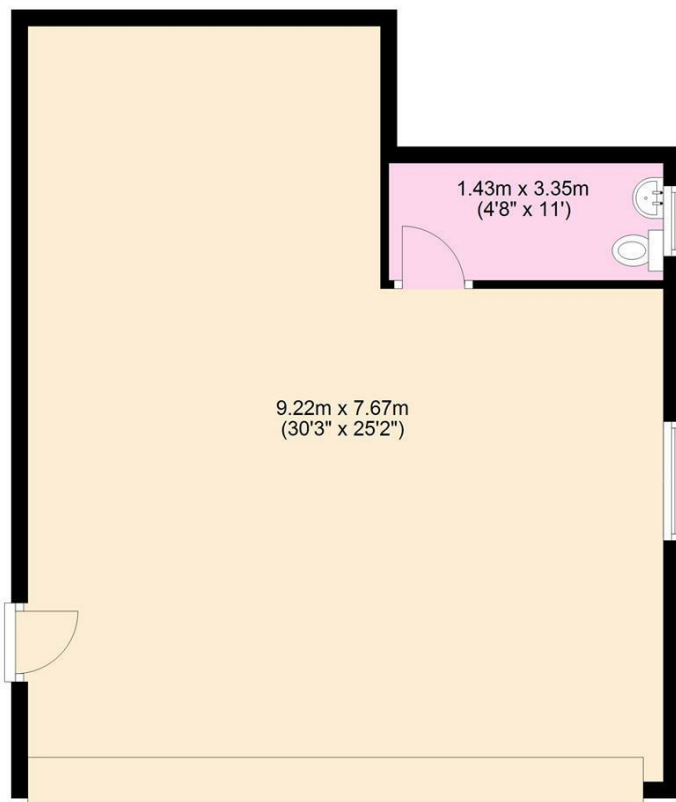


Cartref Lettings

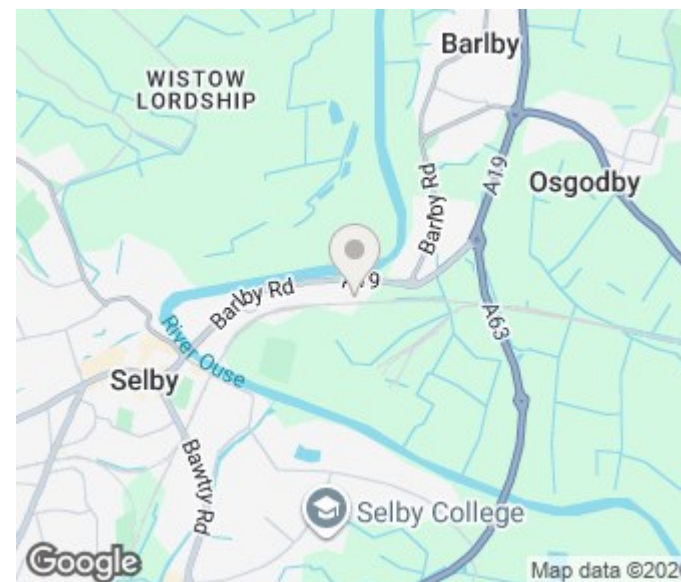
L I C E N S E D A G E N T

Ground Floor

Approx. 65.3 sq. metres (702.4 sq. feet)



Total area: approx. 65.3 sq. metres (702.4 sq. feet)



Energy Efficiency Rating		
	Current	Potential
Very energy efficient - lower running costs		
(92 plus) A		
(81-91) B		
(69-80) C		
(55-68) D		
(39-54) E		
(21-38) F		
(1-20) G		
Not energy efficient - higher running costs		
England & Wales	EU Directive 2002/91/EC	

Agents Note: Whilst every care has been taken to prepare these particulars, they are for guidance purposes only. All measurements are approximate and are for general guidance purposes only and whilst every care has been taken to ensure their accuracy, they should not be relied upon and potential buyers/tenants are advised to recheck the measurements

Cartref
West End Farmhouse Barmby Road
Asselby
DN14 7HE

07394061091
info@cartref-lettings.co.uk
www.cartref-lettings.co.uk

Cartref Lettings
LICENSED AGENT