



**Butlers Place, Milford**  
Godalming

**£485,000**

**Bedrooms:** 2

**Bathrooms:** 2

**Receptions:** 1

Situated within an exclusive gated development for the over 55s, this bright and spacious second-floor apartment offers well-presented accommodation in the highly sought-after village of Milford.

Built in 2003 and offered to the market with no onward chain, the property comprises two generous double bedrooms, including a master bedroom with en-suite, alongside a separate family bathroom. The spacious living accommodation is filled with natural light and opens onto a private balcony enjoying delightful views across the surrounding fields.

The development is beautifully maintained, with immaculate communal gardens, allocated residents' parking and a dedicated visitor suite.

Ideally positioned next door to the popular Refectory gastro pub and just moments from Milford's local shops, amenities and transport links, the apartment combines peaceful surroundings with everyday convenience.

Further benefits include an EPC rating of C, allocated parking, secure gated access and a welcoming community setting, making this an excellent opportunity for those seeking low-maintenance living in a desirable Surrey village.





## Butlers Place, Portsmouth Road, Milford, GU8 5EX

Approximate Gross Internal Area = 906 sq m / 84.2 sq ft

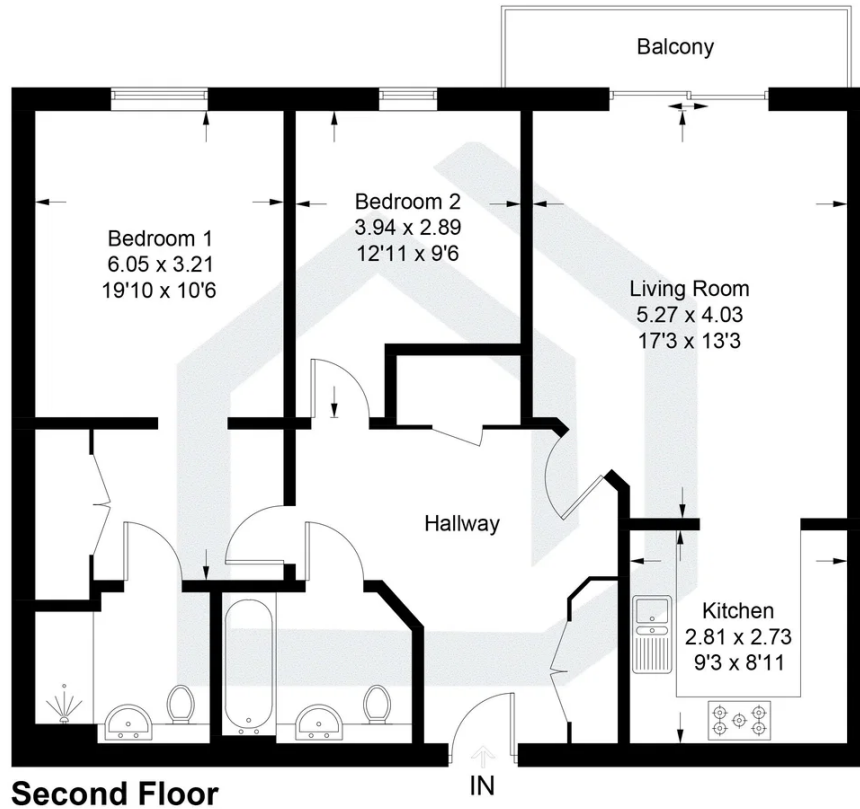


Illustration for identification purposes only, measurements are approximate, not to scale. Fourlabs.co © (ID1315505)

**Bedrooms:** 2

**Bathrooms:** 2

**Receptions:** 1

Situated within an exclusive gated development for the over 55s, this bright and spacious second-floor apartment offers well-presented accommodation in the highly sought-after village of Milford.

Built in 2003 and offered to the market with no onward chain, the property comprises two generous double bedrooms, including a master bedroom with en-suite, alongside a separate family bathroom. The spacious living accommodation is filled with natural light and opens onto a private balcony enjoying delightful views across the surrounding fields.

The development is beautifully maintained, with immaculate communal gardens, allocated residents' parking and a dedicated visitor suite.

Ideally positioned next door to the popular Refectory gastro pub and just moments from Milford's local shops, amenities and transport links, the apartment combines peaceful surroundings with everyday convenience.

Further benefits include an EPC rating of C, allocated parking, secure gated access and a welcoming community setting, making this an excellent opportunity for those seeking low-maintenance living in a desirable Surrey village.



## **Pacey Wingent Dickson Property Partnership Limited**

**197 Lower Road Great Bookham Leatherhead KT23 4DG**

01372 456 804

[info@pwdproperty.co.uk](mailto:info@pwdproperty.co.uk)

<https://pwdproperty.co.uk/>