



**Somertons Close, Guildford, GU2**  
Stoughton

Offers Over  
**£400,000**

**Bedrooms:** 3

**Bathrooms:** 1

**Receptions:** 1

Somertons Close, Guildford, GU2 | Three-Bedroom Family Home | Freehold

A well-presented, freehold three-bedroom family home in a popular residential area of Guildford.

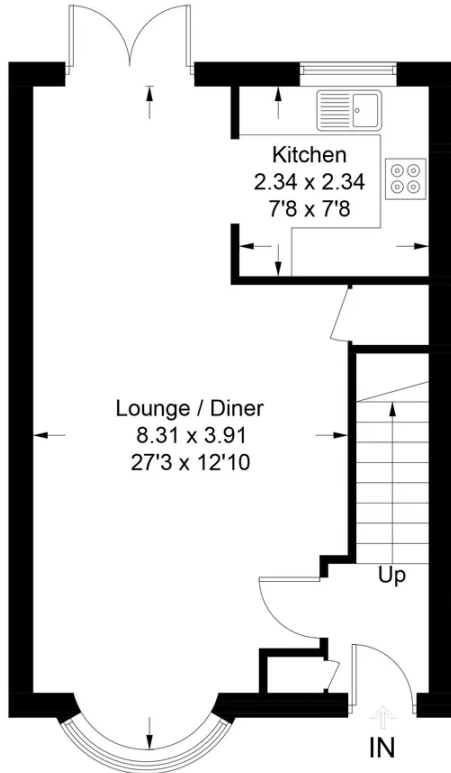
The property boasts a bright double reception room alongside a modern bathroom and three well-proportioned bedrooms. Outside, a beautifully landscaped garden, garage and ample on-street parking ensure convenience for the whole family.

Situated moments from Guildford town centre and station, with swift access to the A3, A31 and M25, commuters and families alike will appreciate the connectivity on offer. Excellent schools are close by, along with local shops within easy walking distance.

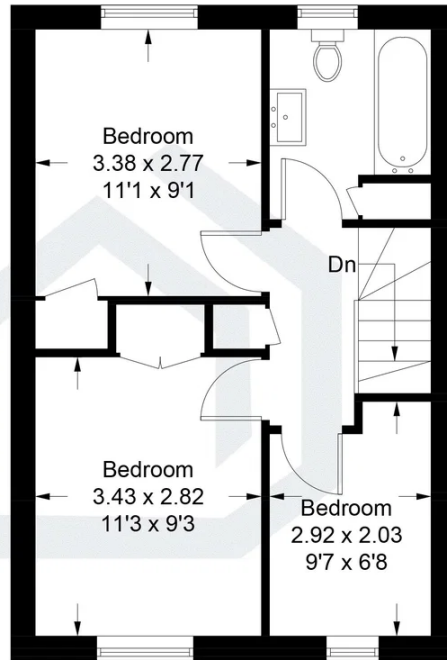


## Somertons Close, Guildford, GU2

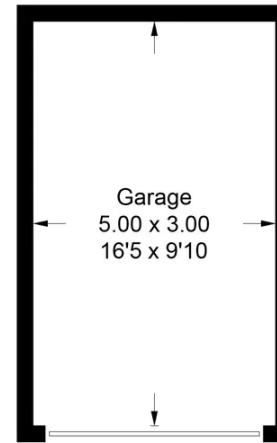
Approximate Gross Internal Area = 74.8 sq m / 805 sq ft  
Garage = 15.0 sq m / 161 sq ft  
Total = 89.8 sq m / 966 sq ft



Ground Floor



First Floor



(Not Shown In Actual Location / Orientation)

Illustration for identification purposes only, measurements are approximate, not to scale. Fourlabs.co © (ID1304442)

**Bedrooms: 3**

**Bathrooms: 1**

**Receptions: 1**

Somertons Close, Guildford, GU2 | Three-Bedroom Family Home | Freehold

A well-presented, freehold three-bedroom family home in a popular residential area of Guildford.

The property boasts a bright double reception room alongside a modern bathroom and three well-proportioned bedrooms. Outside, a beautifully landscaped garden, garage and ample on-street parking ensure convenience for the whole family.

Situated moments from Guildford town centre and station, with swift access to the A3, A31 and M25, commuters and families alike will appreciate the connectivity on offer. Excellent schools are close by, along with local shops within easy walking distance.



**Pacey Wingent Dickson Property Partnership Limited**

**197 Lower Road Great Bookham Leatherhead KT23 4DG**

01372 456 804

[info@pwdproperty.co.uk](mailto:info@pwdproperty.co.uk)

<https://pwdproperty.co.uk/>