



**Wansford Green, Woking, GU21**

**Goldsworth Park**

**£235,000**

**Bedrooms:** 1

**Bathrooms:** 1

**Receptions:** 1

A Spacious One Bedroom Apartment in the Heart of Goldsworth Park

Beautifully positioned overlooking a tranquil leafy green, this generously proportioned one bedroom apartment offers a rare combination of comfort, convenience and exceptional value.

Step inside to discover a light and airy home where space has clearly been a priority. The apartment benefits from outstanding storage throughout, ensuring every item has its place and the living areas remain wonderfully uncluttered. Whether you're a first-time buyer, downsizer, or savvy investor, this property has been thoughtfully designed for modern day-to-day living.

A standout feature is the inclusion of a private garage, providing secure off-street parking and additional storage, a real rarity at this price point. Combined with no service charge, a low ground rent and a long lease, this apartment represents an outstanding financial proposition with minimal ongoing outlays.

Goldsworth Park is a community-focused neighbourhood known for its green open spaces and friendly atmosphere. The scenic Goldsworth Park Lake is just moments away, perfect for leisurely strolls, while local shops, cafés, schools and amenities are all within easy reach.

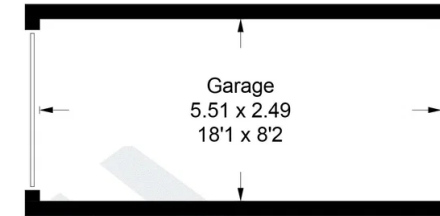
For commuters, the location could not be better. Woking town centre and its mainline railway station, offering fast and frequent services into London Waterloo in around 25 minutes, are just a short distance away. Excellent road links to the A3, M3 and M25 also make travel further afield refreshingly straightforward.

## Wansford Green, Woking, GU21

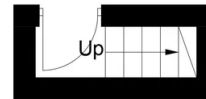
Approximate Gross Internal Area = 48.5 sq m / 522 sq ft

Garage = 13.7 sq m / 147 sq ft

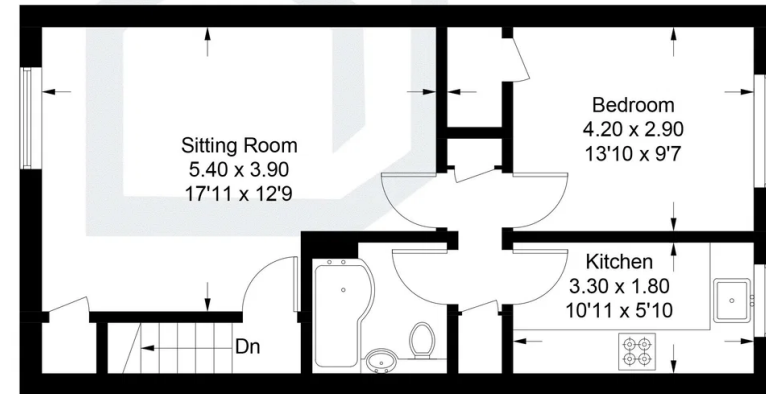
Total = 62.2 sq m / 669 sq ft



(Not Shown In Actual Location / Orientation)



**Ground Floor**

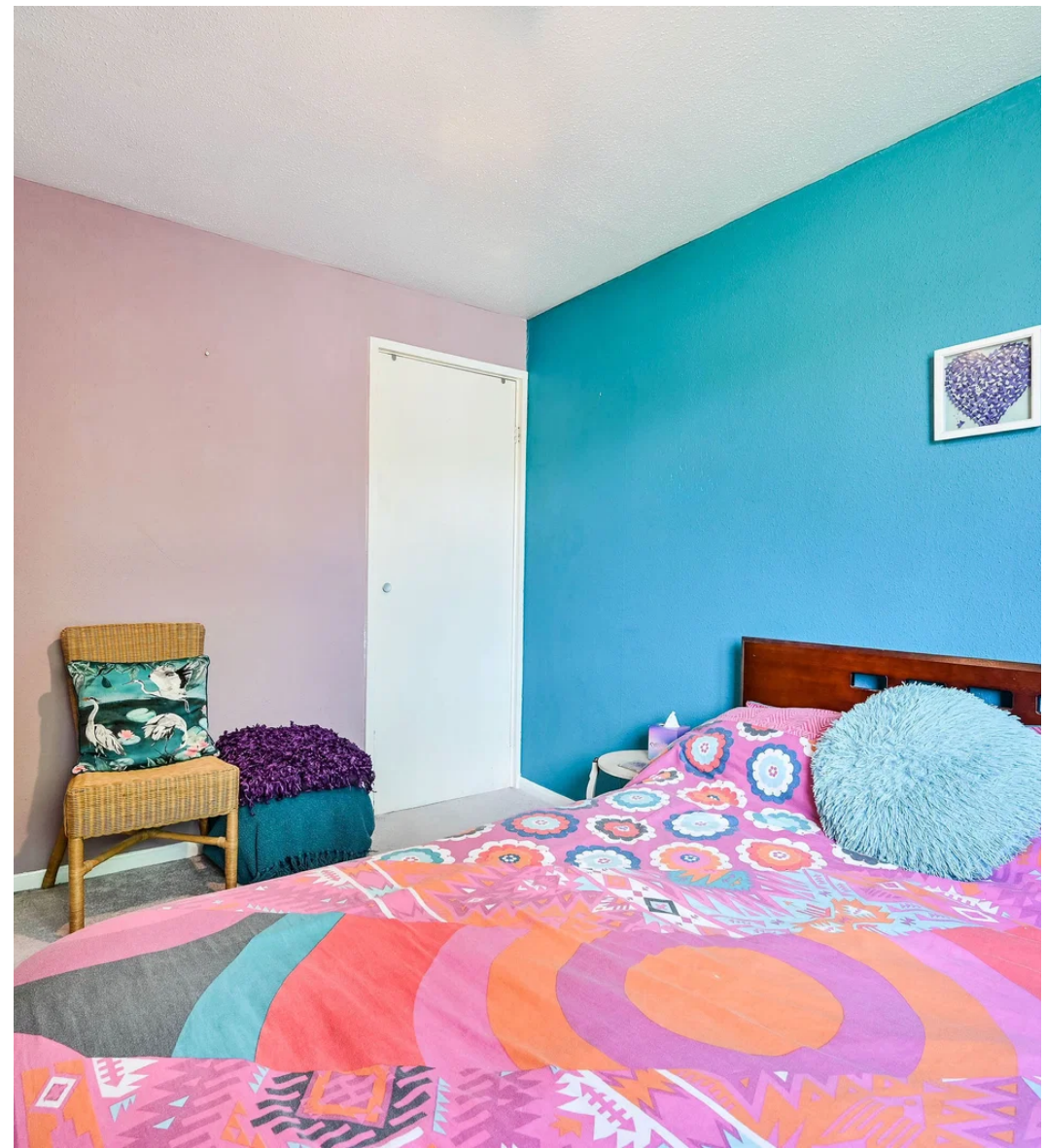


**First Floor**

Illustration for identification purposes only, measurements are approximate, not to scale. Fourlabs.co © (ID1299217)







**Pacey Wingent Dickson Property Partnership Limited**

197 Lower Road Great Bookham Leatherhead KT23 4DG

01372 456 804

[info@pwdproperty.co.uk](mailto:info@pwdproperty.co.uk)

<https://pwdproperty.co.uk/>