



No Display Address Found

Leatherhead

Guide Price

£1,595,000

Property Type: Detached House

Tenure: Freehold

- Handsome Edwardian detached home
- Highly regarded Highlands Road location
- High ceilings and period charm
- Bay windows and fireplaces
- Elegant reception space
- Six well-proportioned bedrooms
- Two bathrooms
- Arranged over three floors
- Driveway parking for multiple cars and garage
- Substantial plot with good garden

A beautiful Edwardian detached home of real character and presence, set on the highly regarded Highlands Road in Leatherhead. Arranged over three floors, this substantial six-bedroom, two-bathroom property offers elegant proportions, excellent versatility and the warmth and charm that is increasingly hard to find. From the moment you arrive, the house has an immediate sense of stature, with attractive elevations, driveway parking, garage and a strong family-home feel. Inside, the accommodation is bright and well balanced, with high ceilings, bay windows, fireplaces and generously sized rooms creating a welcoming and characterful home. The ground floor provides excellent living space for both day-to-day family life and entertaining, while the upper floors offer six well-sized bedrooms and two bathrooms. Outside, the property sits within a substantial plot with a good garden, further enhancing the appeal of this impressive home.

Bedrooms: 6

Bathrooms: 2

Receptions: 2

Council Tax Band: G





A beautiful Edwardian detached home of real character and presence, set on the highly regarded Highlands Road in Leatherhead. Arranged over three floors, this substantial six-bedroom, two-bathroom property offers elegant proportions, excellent versatility and the sort of warmth and charm that is increasingly hard to find.

From the moment you arrive, the house has an immediate sense of stature, with attractive elevations, driveway parking, garage and a strong family-home feel. Inside, the accommodation is both generous and well balanced, with high ceilings, bay windows, fireplaces and beautifully bright rooms combining to create a home that feels welcoming, characterful and full of personality.

The ground floor provides excellent living space, with a welcoming reception hall and a choice of reception rooms that lend themselves equally well to relaxed day-to-day living, entertaining, working from home or family gatherings. The overall feel is one of space, flexibility and natural light.

Across the upper floors are six well-sized bedrooms and two bathrooms, giving the house the scale and adaptability needed for modern family life, whilst still retaining its original sense of elegance and charm.

Outside, the property sits within a substantial plot with off-street parking, garage and a beautiful garden, further enhancing the appeal of this impressive home.

Highlands Road remains one of Leatherhead's most desirable addresses, conveniently positioned for the town centre, schools and transport connections.

A rare opportunity to purchase a fine Edwardian residence in a prime Leatherhead location.



A beautiful Edwardian detached home of real character and presence, set on the highly regarded Highlands Road in Leatherhead. Arranged over three floors, this substantial six-bedroom, two-bathroom property offers elegant proportions, excellent versatility and the sort of warmth and charm that is increasingly hard to find.

From the moment you arrive, the house has an immediate sense of stature, with attractive elevations, driveway parking, garage and a strong family-home feel. Inside, the accommodation is both generous and well balanced, with high ceilings, bay windows, fireplaces and beautifully bright rooms combining to create a home that feels welcoming, characterful and full of personality.

The ground floor provides excellent living space, with a welcoming reception hall and a choice of reception rooms that lend themselves equally well to relaxed day-to-day living, entertaining, working from home or family gatherings. The overall feel is one of space, flexibility and natural light.

Across the upper floors are six well-sized bedrooms and two bathrooms, giving the house the scale and adaptability needed for modern family life, whilst still retaining its original sense of elegance and charm.

Outside, the property sits within a substantial plot with off-street parking, garage and a beautiful garden, further enhancing the appeal of this impressive home.

Highlands Road remains one of Leatherhead's most desirable addresses, conveniently positioned for the town centre, schools and transport connections.

A rare opportunity to purchase a fine Edwardian residence in a prime Leatherhead location.





A beautiful Edwardian detached home of real character and presence, set on the highly regarded Highlands Road in Leatherhead. Arranged over three floors, this substantial six-bedroom, two-bathroom property offers elegant proportions, excellent versatility and the sort of warmth and charm that is increasingly hard to find.

From the moment you arrive, the house has an immediate sense of stature, with attractive elevations, driveway parking, garage and a strong family-home feel. Inside, the accommodation is both generous and well balanced, with high ceilings, bay windows, fireplaces and beautifully bright rooms combining to create a home that feels welcoming, characterful and full of personality.

The ground floor provides excellent living space, with a welcoming reception hall and a choice of reception rooms that lend themselves equally well to relaxed day-to-day living, entertaining, working from home or family gatherings. The overall feel is one of space, flexibility and natural light.

Across the upper floors are six well-sized bedrooms and two bathrooms, giving the house the scale and adaptability needed for modern family life, whilst still retaining its original sense of elegance and charm.



Outside, the property sits within a substantial plot with off-street parking, garage and a beautiful garden, further enhancing the appeal of this impressive home.

Highlands Road remains one of Leatherhead's most desirable addresses, conveniently positioned for the town centre, schools and transport connections.

A rare opportunity to purchase a fine Edwardian residence in a prime Leatherhead location.

A beautiful Edwardian detached home of real character and presence, set on the highly regarded Highlands Road in Leatherhead. Arranged over three floors, this substantial six-bedroom, two-bathroom property offers elegant proportions, excellent versatility and the sort of warmth and charm that is increasingly hard to find.

From the moment you arrive, the house has an immediate sense of stature, with attractive elevations, driveway parking, garage and a strong family-home feel. Inside, the accommodation is both generous and well balanced, with high ceilings, bay windows, fireplaces and beautifully bright rooms combining to create a home that feels welcoming, characterful and full of personality.

The ground floor provides excellent living space, with a welcoming reception hall and a choice of reception rooms that lend themselves equally well to relaxed day-to-day living, entertaining, working from home or family gatherings. The overall feel is one of space, flexibility and natural light.

Across the upper floors are six well-sized bedrooms and two bathrooms, giving the house the scale and adaptability needed for modern family life, whilst still retaining its original sense of elegance and charm.

Outside, the property sits within a substantial plot with off-street parking, garage and a beautiful garden, further enhancing the appeal of this impressive home.

Highlands Road remains one of Leatherhead's most desirable addresses, conveniently positioned for the town centre, schools and transport connections.

A rare opportunity to purchase a fine Edwardian residence in a prime Leatherhead location.





A beautiful Edwardian detached home of real character and presence, set on the highly regarded Highlands Road in Leatherhead. Arranged over three floors, this substantial six-bedroom, two-bathroom property offers elegant proportions, excellent versatility and the sort of warmth and charm that is increasingly hard to find.

From the moment you arrive, the house has an immediate sense of stature, with attractive elevations, driveway parking, garage and a strong family-home feel. Inside, the accommodation is both generous and well balanced, with high ceilings, bay windows, fireplaces and beautifully bright rooms combining to create a home that feels welcoming, characterful and full of personality.

The ground floor provides excellent living space, with a welcoming reception hall and a choice of reception rooms that lend themselves equally well to relaxed day-to-day living, entertaining, working from home or family gatherings. The overall feel is one of space, flexibility and natural light.

Across the upper floors are six well-sized bedrooms and two bathrooms, giving the house the scale and adaptability needed for modern family life, whilst still retaining its original sense of elegance and charm.

Outside, the property sits within a substantial plot with off-street parking, garage and a beautiful garden, further enhancing the appeal of this impressive home.

Highlands Road remains one of Leatherhead's most desirable addresses, conveniently positioned for the town centre, schools and transport connections.

A rare opportunity to purchase a fine Edwardian residence in a prime Leatherhead location.



Property Type: Detached House

Tenure: Freehold

- Handsome Edwardian detached home
- Highly regarded Highlands Road location
- High ceilings and period charm
- Bay windows and fireplaces
- Elegant reception space
- Six well-proportioned bedrooms
- Two bathrooms
- Arranged over three floors
- Driveway parking for multiple cars and garage
- Substantial plot with good garden

A beautiful Edwardian detached home of real character and presence, set on the highly regarded Highlands Road in Leatherhead. Arranged over three floors, this substantial six-bedroom, two-bathroom property offers elegant proportions, excellent versatility and the warmth and charm that is increasingly hard to find. From the moment you arrive, the house has an immediate sense of stature, with attractive elevations, driveway parking, garage and a strong family-home feel. Inside, the accommodation is bright and well balanced, with high ceilings, bay windows, fireplaces and generously sized rooms creating a welcoming and characterful home. The ground floor provides excellent living space for both day-to-day family life and entertaining, while the upper floors offer six well-sized bedrooms and two bathrooms. Outside, the property sits within a substantial plot with a good garden, further enhancing the appeal of this impressive home.

Bedrooms: 6

Bathrooms: 2

Receptions: 2

Council Tax Band: G

Highlands Road, Leatherhead, KT22

Approximate Gross Internal Area = 198.4 sq m / 2135 sq ft

Garage = 18.6 sq m / 200 sq ft

Total = 217.0 sq m / 2335 sq ft

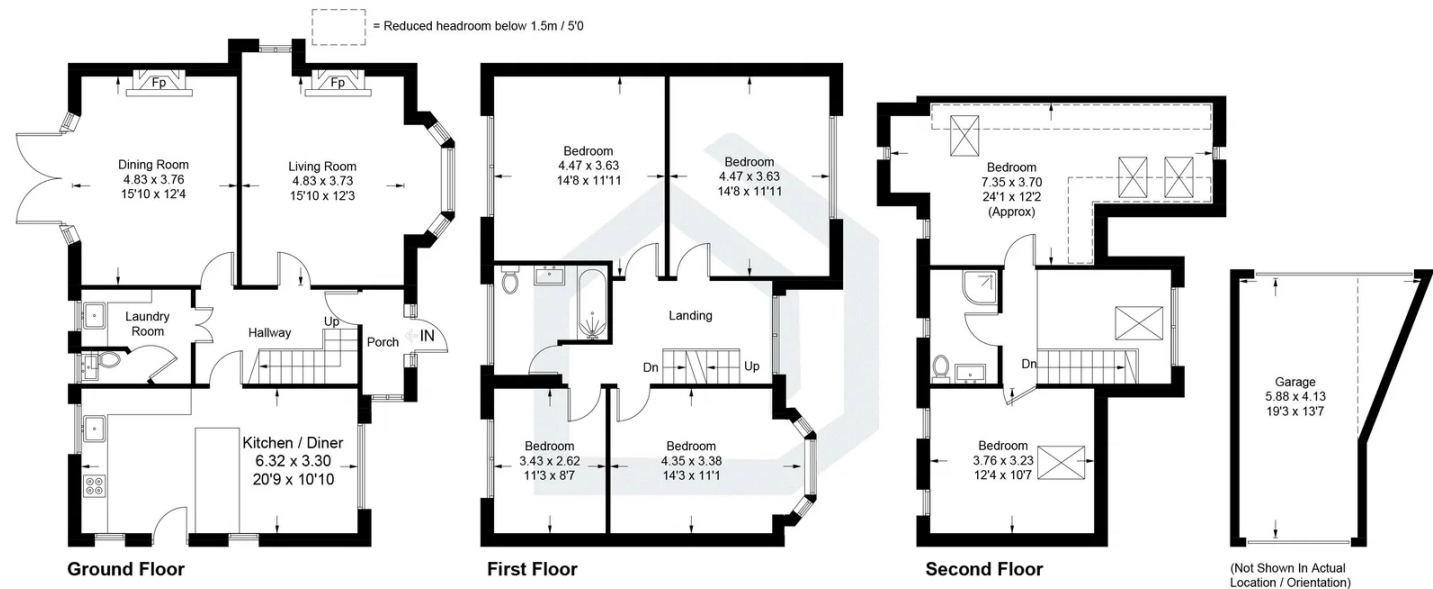


Illustration for identification purposes only, measurements are approximate, not to scale. Fourlabs.co © (ID1293473)