



Bateson Way, Woking, GU21

Woking

£425,000

Bedrooms: 3

Bathrooms: 1

Receptions: 2

Chain Free

Ideally located on a popular residential road within easy reach of local schools, amenities, and both Woking and West Byfleet mainline stations, Pacey Wingent Dickson brings this well-presented, three-bedroom terraced home to the market for sale.

The ground floor features a spacious open-plan kitchen and living area, alongside a separate reception room providing additional flexibility for entertaining or relaxing. Upstairs, the property comprises three well-proportioned bedrooms and a family bathroom.

Externally, the home benefits from a private rear garden complete with a shed, ideal for storage or outdoor hobbies, as well as convenient side access. To the front, a large driveway provides ample off-street parking.

This property is an excellent opportunity for families or commuters seeking a comfortable home in a highly desirable location.





Bateson Way, Woking, GU21 5LE

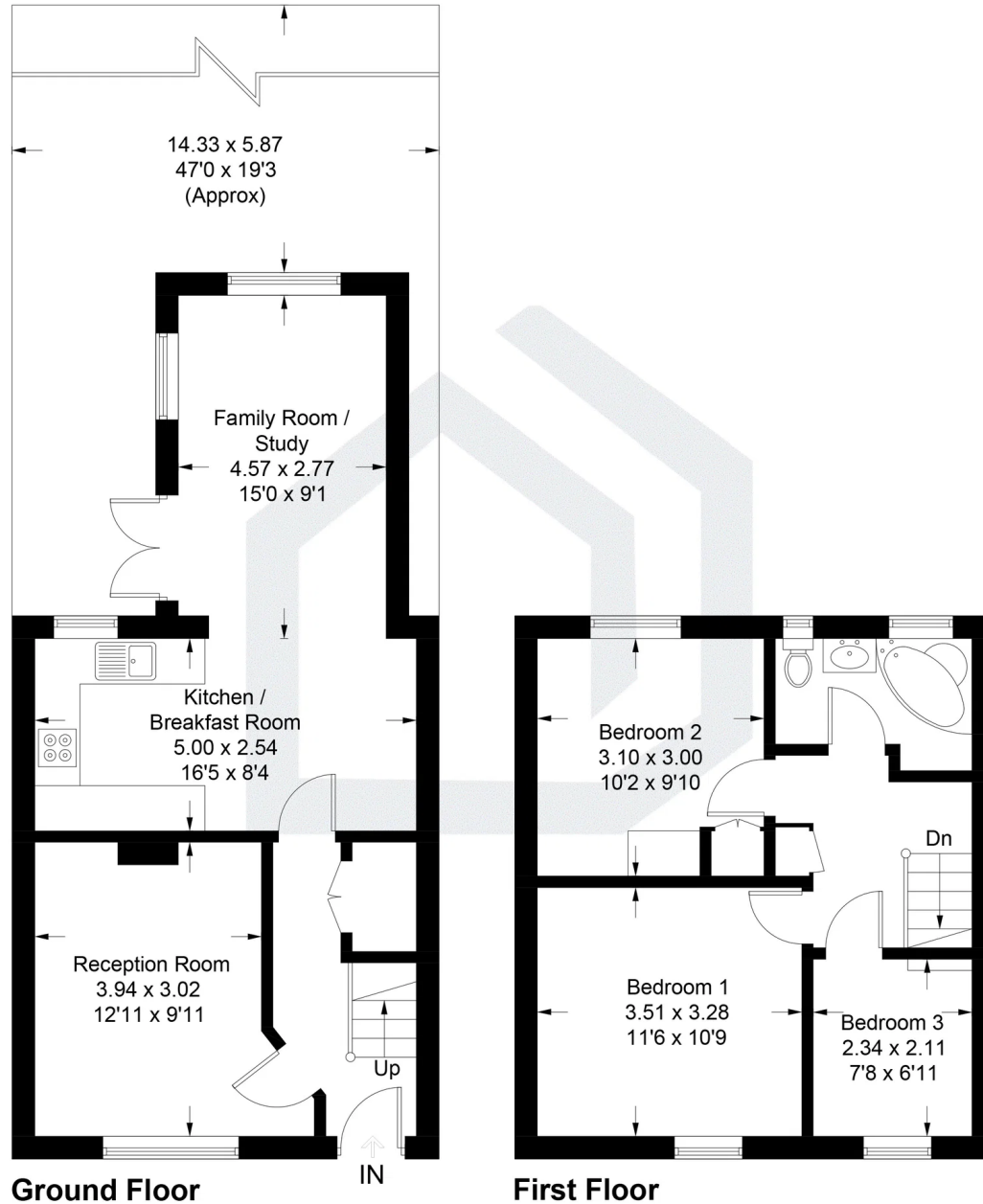
Approximate Gross Internal Area = 84.1 sq m / 905 sq ft



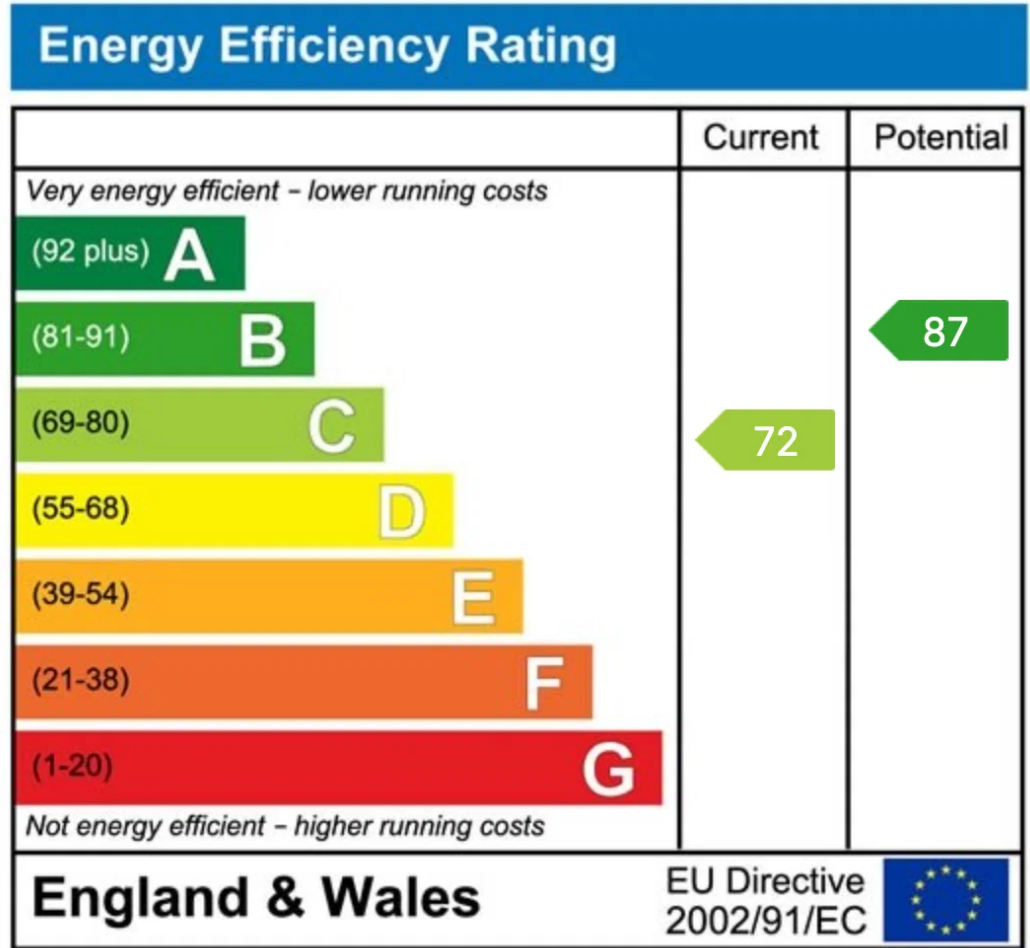
Bedrooms: 3

Bathrooms: 1

Receptions: 2



- Chain Free
- Three good-sized bedrooms
- Terraced home
- Large extended kitchen/dining space
- Private rear garden with shed
- Driveway suitable for multiple cars
- Smartly presented throughout
- Side access to garden
- Close to Woking and West Byfleet mainline stations
- Close to local schools



Pacey Wingent Dickson Property Partnership Limited

197 Lower Road Great Bookham Leatherhead KT23 4DG

01372 456 804

info@pwdproperty.co.uk

<https://pwdproperty.co.uk/>