



Eastwick Park Avenue, Bookham, KT23

Leatherhead

£675,000

Bedrooms: 4

Bathrooms: 1

Receptions: 2

We are delighted to be marketing this spacious and well-presented four-bedroom detached chalet-style bungalow, ideally situated within easy reach of the highly regarded Eastwick Schools, Bookham High Street and just a short walk to Bookham mainline station.

The front door opens conveniently into a welcoming entrance hallway. To the rear of the property, the bright and airy living room enjoys a double aspect, allowing for plenty of natural light. Leading on from the living room are stairs to the first floor and patio doors leading to the rear garden.

The kitchen/breakfast room is well-appointed with wall and base units. Leading from the kitchen is a useful utility area, and a conservatory, which in turn features patio doors opening onto the garden.

A covered side passageway offers practical access to both the front and rear gardens, as well as to the garage.

The accommodation comprises four bedrooms in total. Two bedrooms are situated on the ground floor, served by a family bathroom and a separate WC. To the first floor are two further well-proportioned bedrooms, both benefiting from useful eaves storage.

Externally, the property enjoys a driveway to the front providing off-street parking for multiple vehicles, in addition to the garage.

Located in a highly sought-after residential area of Bookham, within close proximity to excellent local schools, amenities and transport links, this charming home presents a wonderful opportunity to acquire a versatile property in a prime village setting.





Eastwick Park Avenue, Bookham, KT23

Approximate Gross Internal Area = 173.1 sq m / 1863 sq ft
(Including Garage)

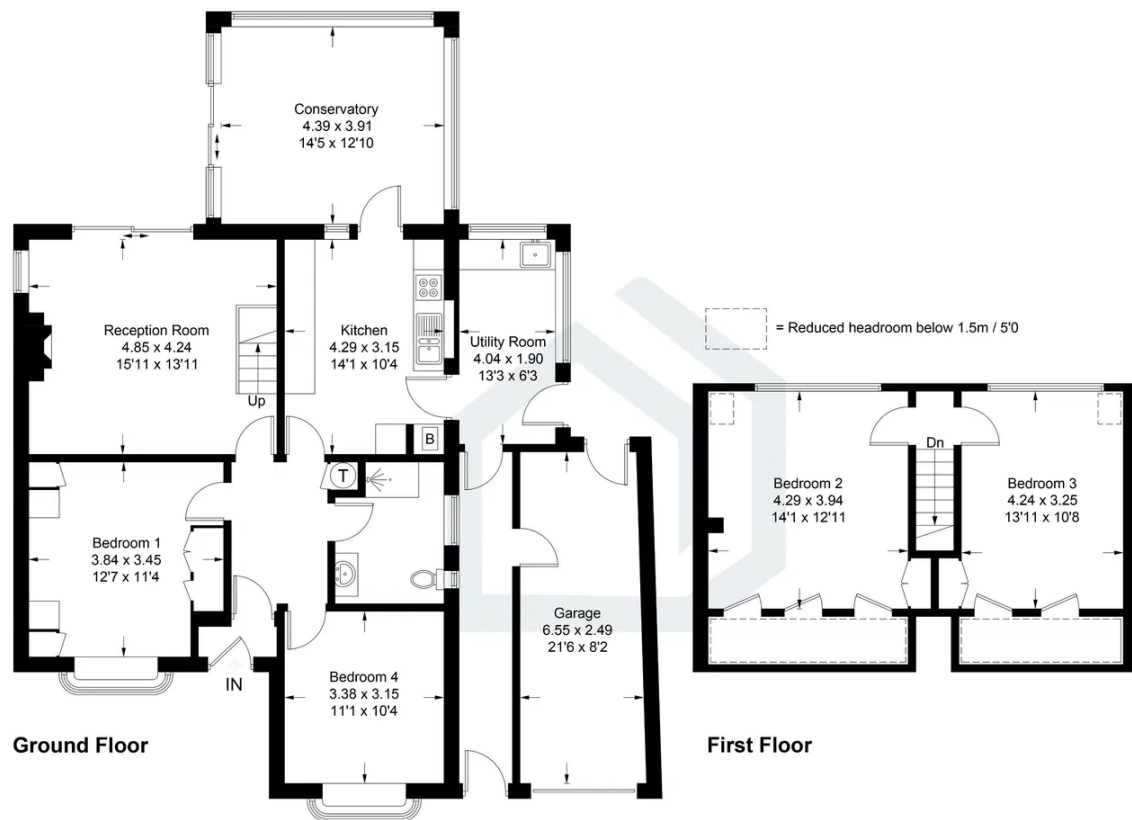


Illustration for identification purposes only, measurements are approximate,
not to scale. Fourlabs.co © (ID1278236)

Bedrooms: 4

Bathrooms: 1

Receptions: 2

We are delighted to be marketing this spacious and well-presented four-bedroom detached chalet-style bungalow, ideally situated within easy reach of the highly regarded Eastwick Schools, Bookham High Street and just a short walk to Bookham mainline station.

The front door opens conveniently into a welcoming entrance hallway. To the rear of the property, the bright and airy living room enjoys a double aspect, allowing for plenty of natural light. Leading on from the living room are stairs to the first floor and patio doors leading to the rear garden.

The kitchen/breakfast room is well-appointed with wall and base units. Leading from the kitchen is a useful utility area, and a conservatory, which in turn features patio doors opening onto the garden.

A covered side passageway offers practical access to both the front and rear gardens, as well as to the garage.

The accommodation comprises four bedrooms in total. Two bedrooms are situated on the ground floor, served by a family bathroom and a separate WC. To the first floor are two further well-proportioned bedrooms, both benefiting from useful eaves storage.

Externally, the property enjoys a driveway to the front providing off-street parking for multiple vehicles, in addition to the garage.

Located in a highly sought-after residential area of Bookham, within close proximity to excellent local schools, amenities and transport links, this charming home presents a wonderful opportunity to acquire a versatile property in a prime village setting.



Pacey Wingent Dickson Property Partnership Limited

197 Lower Road Great Bookham Leatherhead KT23 4DG

01372 456 804

info@pwdproperty.co.uk

<https://pwdproperty.co.uk/>