



Mercury House, Heathcrot, W5
Ealing

£1,950 pcm

Deposit: £2,250

Date First Available: 05/08/2026

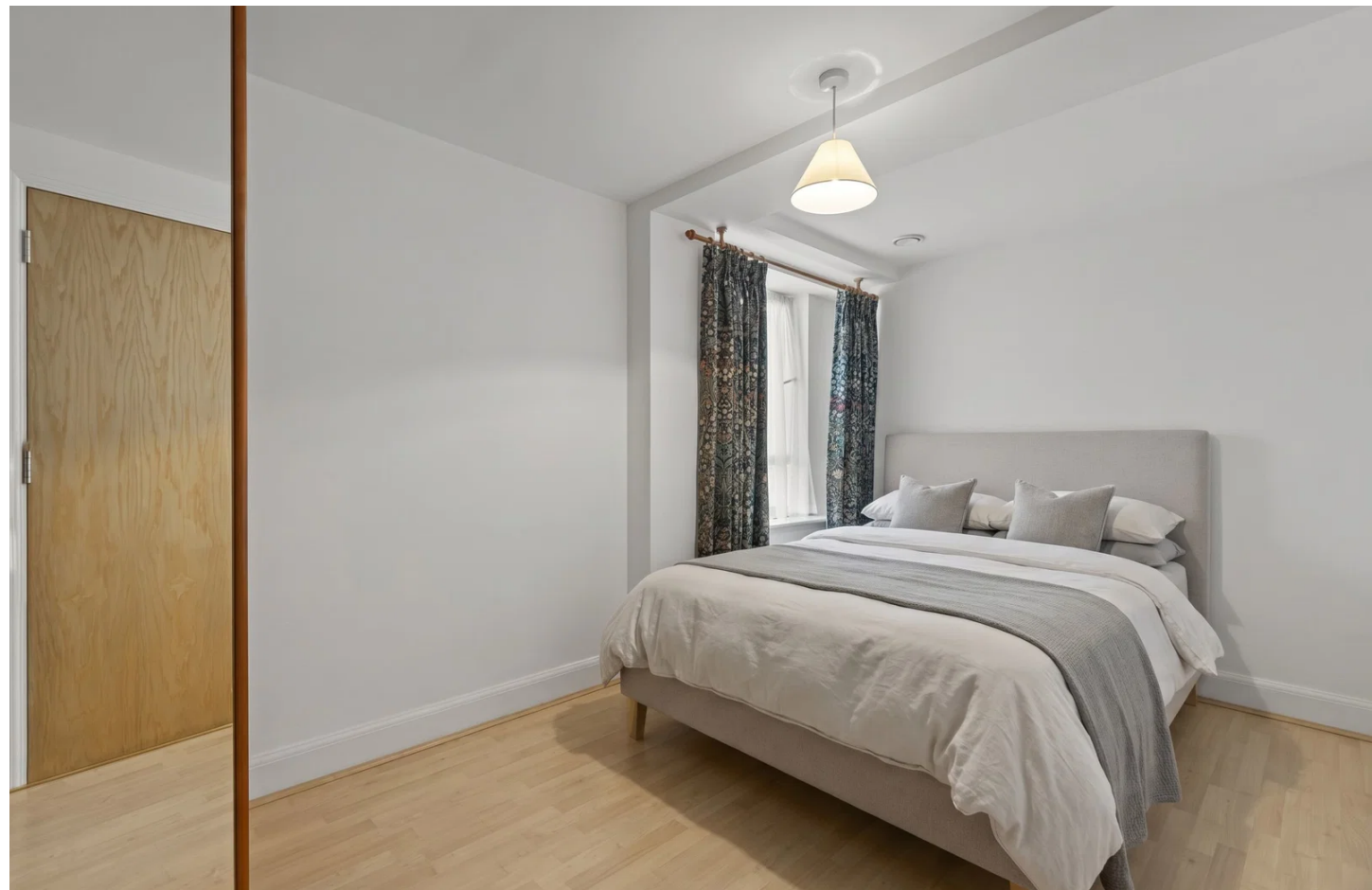
Furnishing: Furnished

A beautifully presented, fully furnished one-bedroom apartment set within Mercury House on the sought-after Hanger Hill Garden Estate in W5. Ready to move into, the flat is arranged around a large reception room with genuine flexibility, offering plenty of space for dining, sitting and a home working area alike.

Mercury House offers a genuine lifestyle package that is hard to find in this part of London: a manned porter service, a residents' gym, and gated off-street parking, all combined with a location just moments from Park Royal Underground station and excellent road links via the A40, M40 and M25.

Location & Local Area

Heathcroft sits within the Hanger Hill Garden Estate, a well-regarded conservation area of 1930s mock-Tudor houses and mansion blocks arranged around ornamental gardens and tree-lined streets. It gives the immediate surroundings a distinctive, leafy character, despite sitting within easy reach of central London and the motorway network.



Deposit: £2,250

Date First Available: 05/08/2026

Furnishing: Furnished

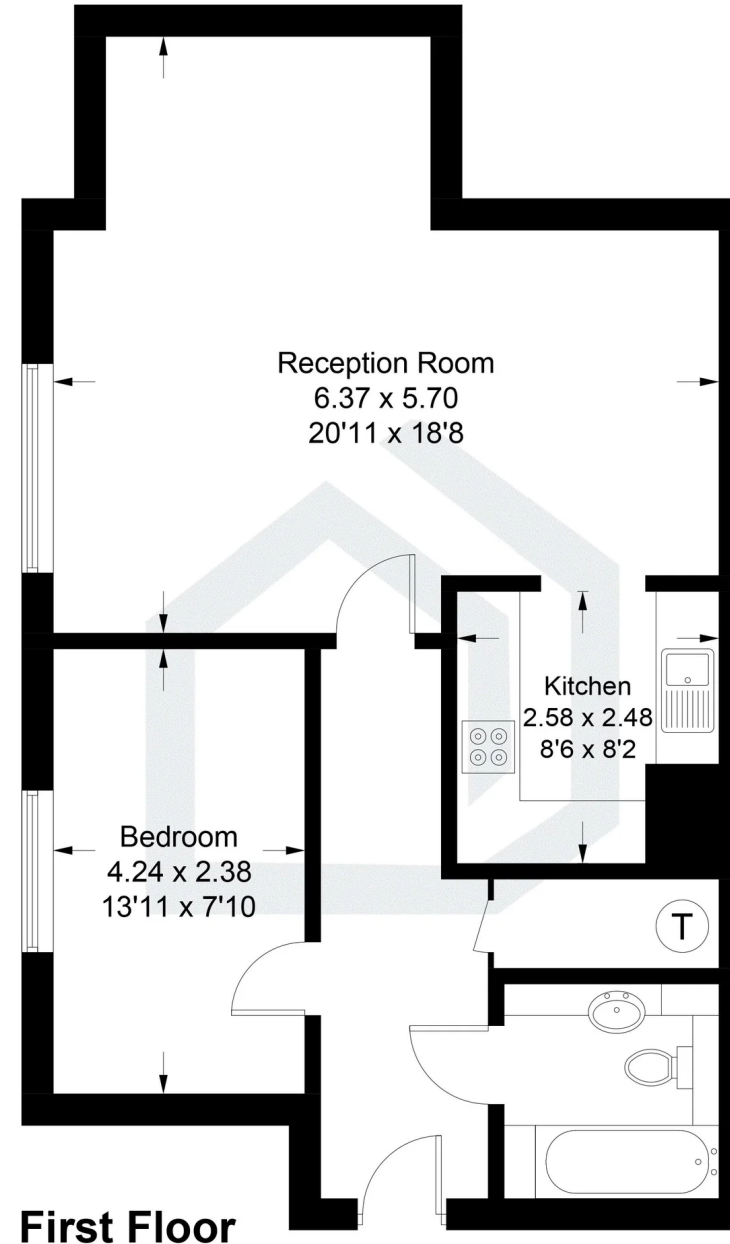
Park Royal Underground station, on the Piccadilly line, is just moments from the front door, with trains reaching Piccadilly Circus in around 30 minutes and fast links out to Heathrow Airport in the other direction. For drivers, the A40 (Western Avenue) is close by, feeding directly into the M40 and the M25, making this a well-connected base both for commuting into town and for trips further afield.

Day-to-day amenities are well covered nearby, with Ealing Broadway a short journey away offering Ealing Broadway Shopping Centre (over 85 shops including M&S, H&M and Boots) alongside Dickens Yard, a pedestrianised quarter of restaurants, bars and boutique shops. The area's dining scene is similarly varied, taking in everything from Santa Maria's Neapolitan pizza to Charlotte's Place and a strong choice of Japanese, Indian and Middle Eastern restaurants.

For green space, Walpole Park's 28 acres of Grade II listed gardens and lakes and the open expanse of Ealing Common are both close by, along with Hanger Hill Park running alongside the Grand Union Canal. Ealing Cricket Club and a tennis centre near Lammas Park provide further options for sport and recreation.

Mercury House, Heathcroft, W5

Approximate Gross Internal Area = 62.0 sq m / 667 sq ft



First Floor

Illustration for identification purposes only, measurements are approximate, not to scale. floorplansUsketch.com © (ID1318555)





Pacey Wingent Dickson Property Partnership Limited
197 Lower Road Great Bookham Leatherhead KT23 4DG

01372 456 804
info@pwdproperty.co.uk
<https://pwdproperty.co.uk/>