



London Road, Guildford, GU4 7JS

Guildford

£1,575 pcm

**Deposit:** £1,817

**Date First Available:** 17/10/2025

This well-presented top floor two double bedroom apartment is ideally situated just moments from Guildford town centre and within walking distance of local shops. The property benefits from excellent transport links, offering easy access to the A3, A31 and M25.

The property comprises a welcoming hallway leading to a modern fitted kitchen/living area with appliances, two spacious double bedrooms and a family bathroom with shower over bath. Further features include on-road parking, and the property falls within the sought-after catchment area for George Abbot School.

Some images may have been digitally enhanced for presentation purposes; however, they remain materially representative of the property.

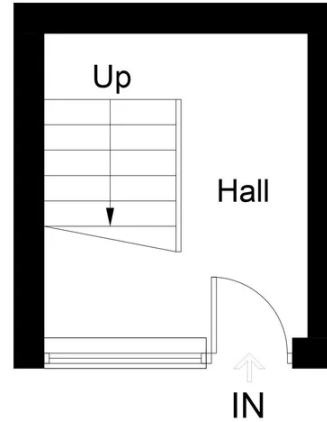


**Deposit:** £1,817

**Date First Available:** 17/10/2025

This well-presented top floor two double bedroom apartment is ideally situated just moments from Guildford town centre and within walking distance of local shops. The property benefits from excellent transport links, offering easy access to the A3, A31 and M25.

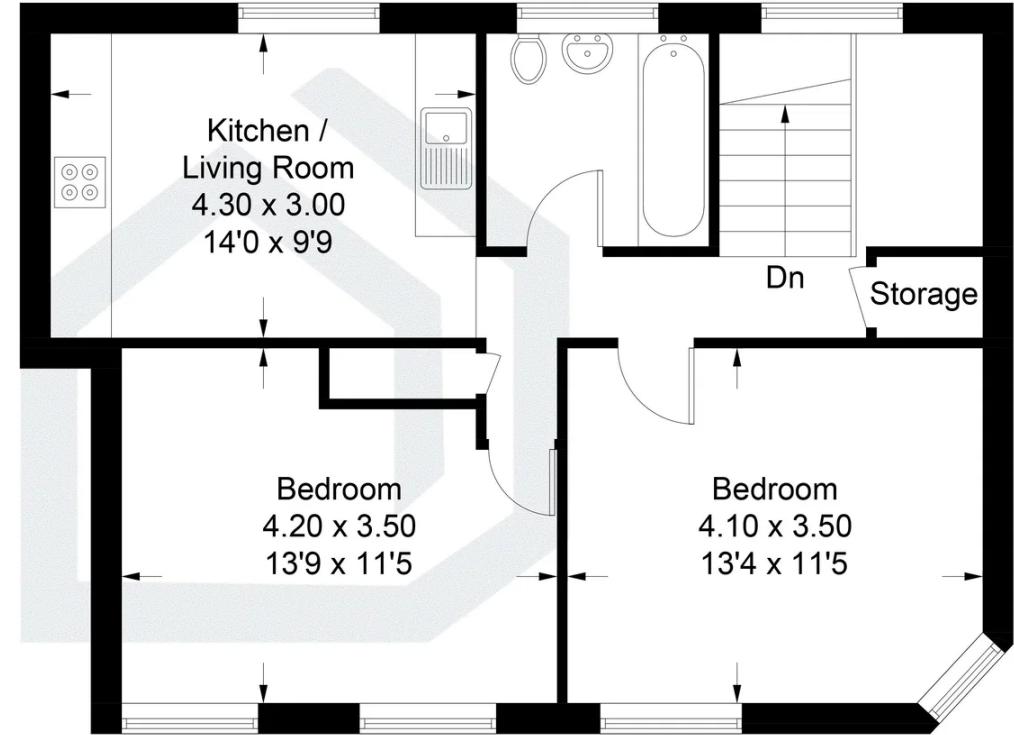
The property comprises a welcoming hallway leading to a modern fitted kitchen/living area with appliances, two spacious double bedrooms and a family bathroom with shower over bath. Further features include on-road parking, and the property falls within the sought-after catchment area for George Abbot School.



**Ground Floor**

## London Road, Guildford, GU4

Approximate Gross Internal Area = 62.5 sq m / 673 sq ft



**First Floor**

Illustration for identification purposes only, measurements are approximate, not to scale. Fourlabs.co © (ID1237068)

