



Springfield Road, Guildford, GU1 4DP

Guildford

£2,600 pcm

Deposit: £3,000

Date First Available: 02/06/2026

Furnishing: Unfurnished

This charming detached Victorian home, located just off the historic cobbled high street, blends original character with modern updates. The ground floor features two living rooms, including a cozy sitting room with a cast iron fireplace, and a spacious open-plan kitchen/dining/family room perfect for everyday living. The kitchen is equipped with wooden units, a seven-burner gas range, fridge/freezer, and a dishwasher. The dining/family area opens to the garden, creating an ideal space for family and entertaining. Upstairs, the home offers a generous landing, a front-facing main bedroom, two additional bedrooms, and a tiled bathroom. The property also benefits from off-street parking.

Guildford is a vibrant, bustling market town situated in the centre of the county of Surrey within easy reach of Heathrow and Gatwick airports, and with excellent rail links to London (40 minutes) and served by the M25, M3 and A3. The town centre offers a variety of entertainment venues, including The Yvonne Arnaud Theatre and G Live, as well as excellent shopping opportunities and a variety of restaurants and bars. The town is situated close to the Surrey Hills Area of Outstanding Natural Beauty for walking, taking in views over the town, the Surrey countryside and the London skyline.



Deposit: £3,000

Date First Available: 02/06/2026

Furnishing: Unfurnished

This charming detached Victorian home, located just off the historic cobbled high street, blends original character with modern updates. The ground floor features two living rooms, including a cozy sitting room with a cast iron fireplace, and a spacious open-plan kitchen/dining/family room perfect for everyday living. The kitchen is equipped with wooden units, a seven-burner gas range, fridge/freezer, and a dishwasher. The dining/family area opens to the garden, creating an ideal space for family and entertaining. Upstairs, the home offers a generous landing, a front-facing main bedroom, two additional bedrooms, and a tiled bathroom. The property also benefits from off-street parking.

Guildford is a vibrant, bustling market town situated in the centre of the county of Surrey within easy reach of Heathrow and Gatwick airports, and with excellent rail links to London (40 minutes) and served by the M25, M3 and A3. The town centre offers a variety of entertainment venues, including The Yvonne Arnaud Theatre and G Live, as well as excellent shopping opportunities and a variety of restaurants and bars. The town is situated close to the Surrey Hills Area of Outstanding Natural Beauty for walking, taking in views over the town, the Surrey countryside and the London skyline.





Springfield Road, Guildford, GU1 4DP

Approximate Gross Internal Area = 90.6 sq m / 975 sq ft

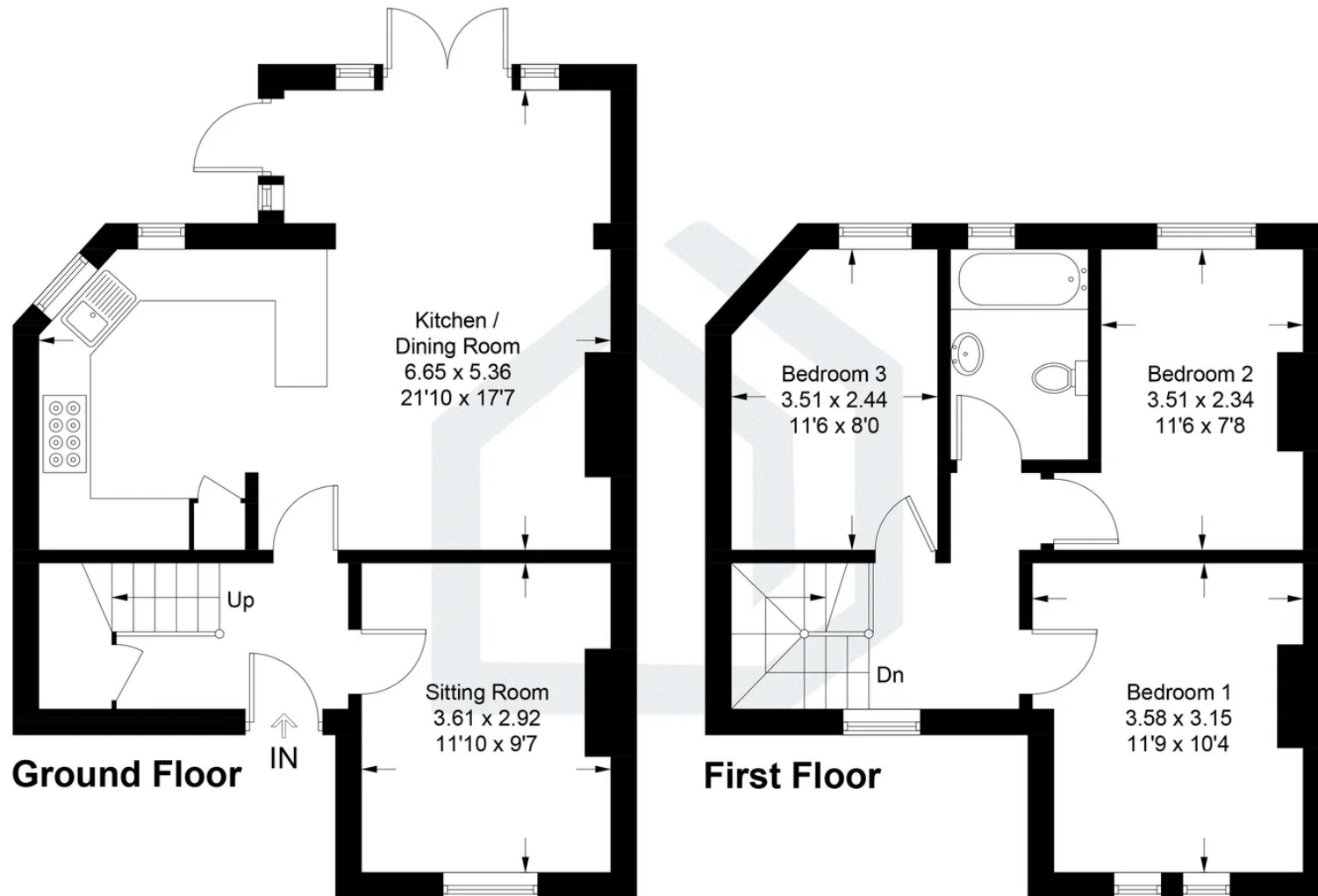


Illustration for identification purposes only, measurements are approximate, not to scale. Fourlabs.co © (ID1172324)

Pacey Wingent Dickson Property Partnership Limited

197 Lower Road Great Bookham Leatherhead KT23 4DG

01372 456 804

info@pwdproperty.co.uk

<https://pwdproperty.co.uk/>