



FLINT CHEQUER HOUSE

Hanging Langford

Flint Chequer House is a really clever house.

From the outside, Flint Chequer House has all the character of a traditional village home, with its Chilmark stone, flint elevations and classic detailing, but inside the house feels bright, contemporary and is surprisingly spacious.

Built by the highly regarded Classic Architecture Company in 2008, the house was designed to combine traditional craftsmanship with the comfort and efficiency of a modern home. Deep window sills, oak joinery, cast iron guttering and thick stone walls give the house real substance and character, while underfloor heating throughout and thoughtful design make day-to-day living easy.





One of the things that immediately stands out is the amount of space. The rooms are all genuinely good sizes and there is a lovely sense of light throughout the house. The sitting room is particularly impressive and has plenty of room for relaxing, entertaining and even a work-from-home corner without feeling compromised. French doors open straight onto the garden and the woodburning stove makes this large room feel cosy in winter (without losing the feeling of space).





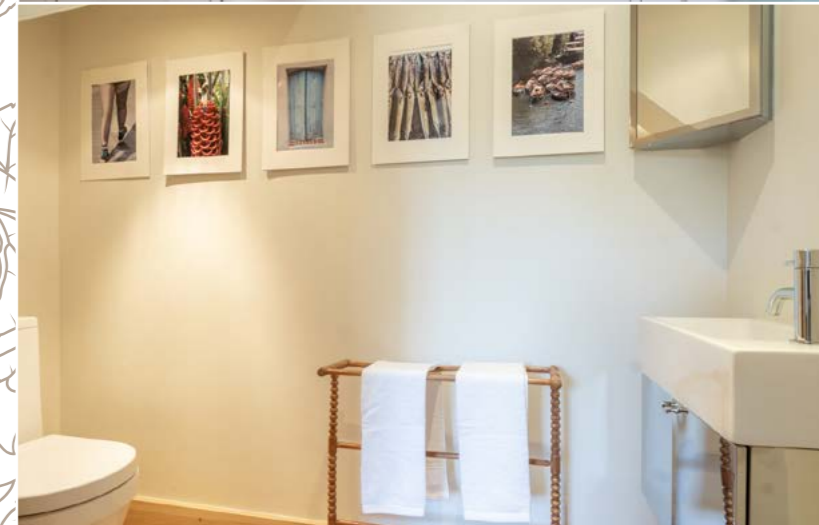
The completely redesigned kitchen is a real strength of the house and feels very much like the heart of everyday life. It is a big, sociable room with a large central island, extensive storage, plenty of preparation space with room for a substantial dining table in front of the French doors overlooking the garden. It's easy to imagine this being the room everyone naturally gathers in.





Clever storage has been added by way of deep drawers and pull-out cupboards, while the mix of 'vintage' granite and wooden worktops gives the space real warmth and character beautifully augmented by the comprehensive lighting throughout.

There is a separate laundry room leading off the kitchen with fitted pantry shelving, keeping the practical side of life neatly organised and out of sight. A cloakroom completes the ground floor accommodation.





Upstairs, all three bedrooms are roomy comfortable doubles, which is surprisingly rare to find. The principal bedroom is particularly generous, with fitted wardrobes, a large en suite shower room and an excellent dressing room and storage area created above the garage.





The two remaining bedrooms are equally versatile and have Jack and Jill access to the main bathroom, giving them an almost en suite feel which works brilliantly for guests, family or visiting friends.





Outside, the garden has two lovely Chilmark stone boundary walls and a rear fence making it feel private, secure and manageable rather than overwhelming. There is a large patio for outdoor dining and entertaining, established planting, ornamental cherry trees and a lovely hawthorn tree which fills the garden with birdsong. The garden enjoys the morning sun, making the patio a particularly lovely spot for coffee at the start of the day, while parts of the garden continue to catch the sun well into the afternoon and evening during the summer months. Everything has been thoughtfully planned, including concealed bin and oil tank storage, a separate log store and a separate door allows easy access between the garden and garage.



The house is accessed from Chapel Lane, a close, giving it a lovely sense of privacy and security, making it equally appealing as a permanent home, a lock-up-and-leave country base or somewhere to downsize without compromise. The large garage to one side of the front of the house has an up and over door and along the front there is generous space for parking while the enclosed garden makes the property feel safe and easy to manage.





The village itself is a huge part of the appeal. Hanging Langford has a genuinely friendly community feel and there are excellent walks straight from the doorstep, including routes along the River Wylde and through Grovely Woods. Langford Lakes Nature Reserve, an active village hall, cricket ground and several very good pubs are all nearby, giving the area a lovely balance of countryside, community and convenience.





What Flint Chequer House does so well is combine all the things buyers are usually searching for but rarely find together - proper room sizes, energy efficiency, character, storage, practicality and a location that genuinely supports everyday life. It would work equally well for a professional couple, downsizers, a small family or buyers looking for an easy weekend escape from London. It's simply a fabulous house that feels easy to love from the moment you walk through the door.



KEY FEATURES

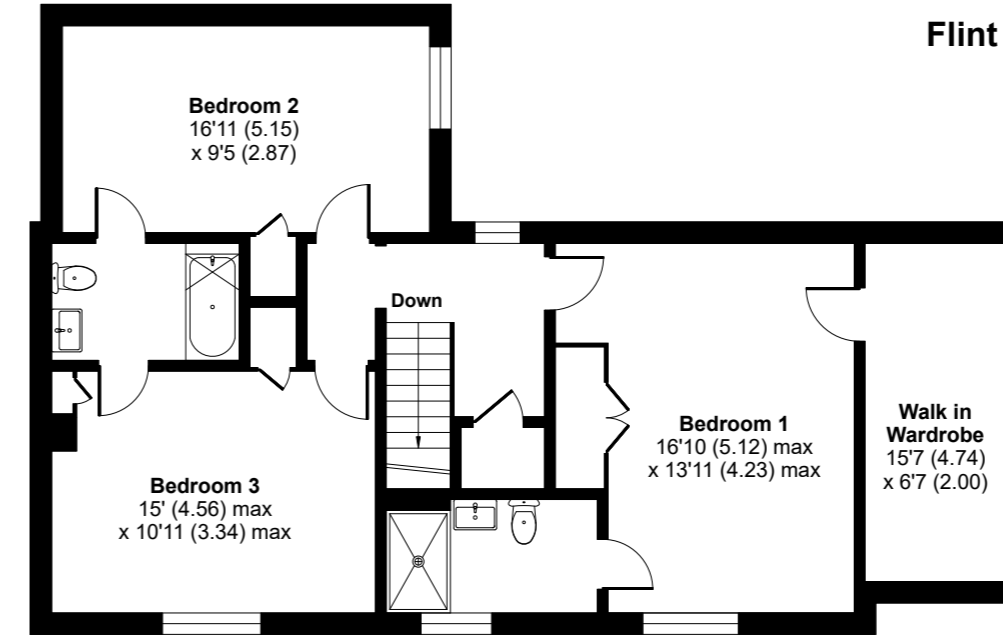
- Detached Chilmark stone and flint home built by the renowned Classic Architecture Company
- Three generous double bedrooms and two bathrooms
- Principal bedroom with ensuite shower room and dressing room
- Stunning redesigned kitchen with central island
- Impressive 26ft sitting room with woodburning stove
- Underfloor heating throughout
- Spacious, light-filled accommodation
- Enclosed garden with morning sun terrace
- Garage and driveway parking
- Friendly Wylve Valley village with countryside walks and excellent access to Salisbury



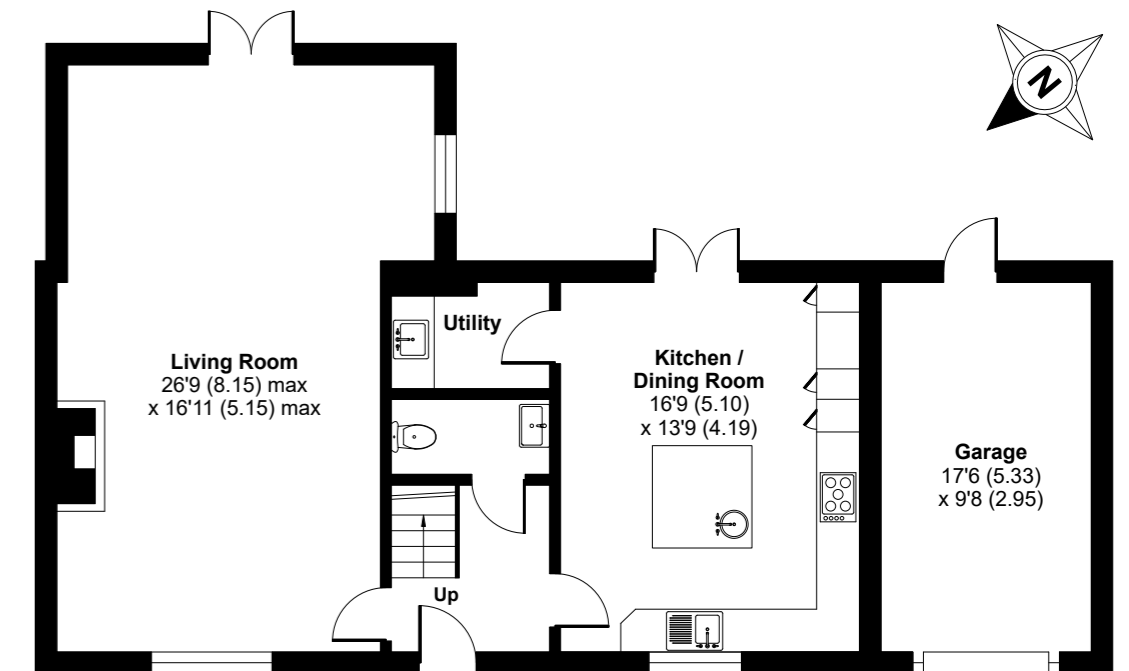
Address	Flint Chequer House, Wylve Road, Hanging Langford, Salisbury SP3 4NN
EPC	
Tenure	Freehold
Council Tax	Band F
Local Authority	Wiltshire Council
Property Size	158 sq m / 1702 sq ft (house only)
Parking	Single garage and hardstanding in front of house & garage
Utilities	Mains
Heating	Oil boiler, underfloor heating throughout & woodburner. The boiler can be turned off in summer and water heated by electricity.

Flint Chequer House, Wylve Road, Hanging Langford, Salisbury, SP3

Approximate Area = 1702 sq ft / 158.1 sq m
 Garage= 164 sq ft / 15.2 sq m
 Total = 1866 sq ft / 173.3 sq m
 For identification only - Not to scale



FIRST FLOOR



GROUND FLOOR





FLINT CHEQUER HOUSE

Wylce Road

piccolo
property sales & lettings

www.piccoloproperty.co.uk
info@piccoloproperty.co.uk
7 North Street, Wilton, SP2 0HA
01722 580059