







27 Holly Grove

Tabley, Knutsford

A stylish, spacious 3-bed home with flexible living, modern kitchen, large rear garden, driveway, and air-source heat pump. Close to Knutsford, Altrincham, and motorway links.

Council Tax band: C

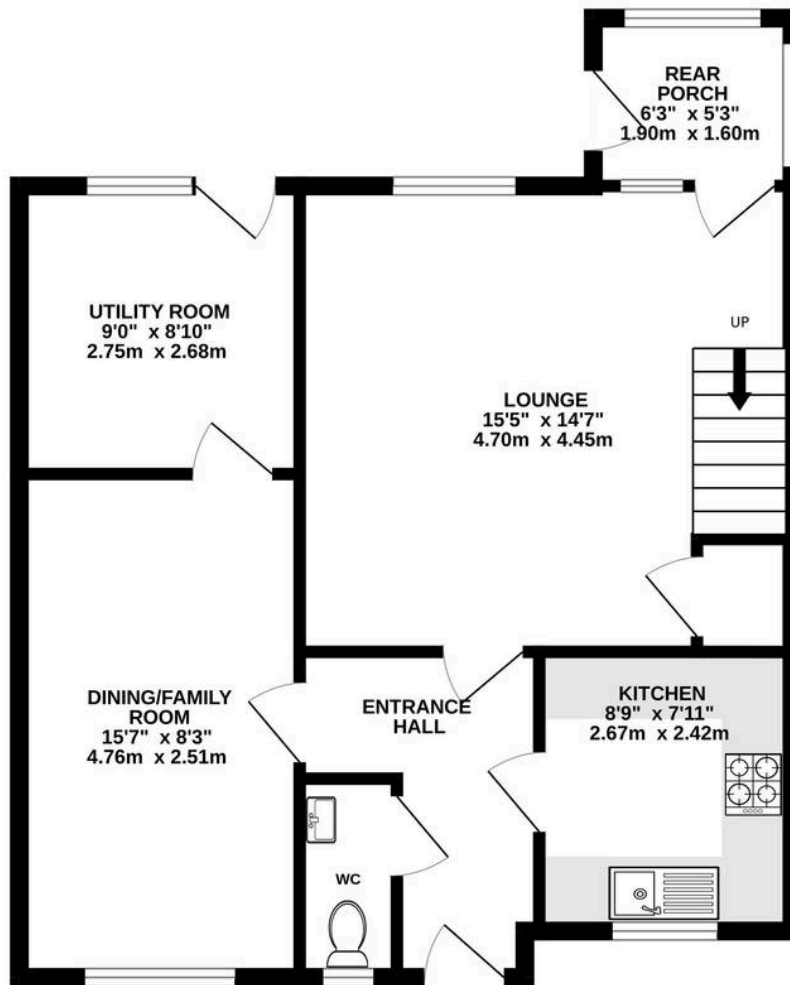
Tenure: Freehold

EPC Energy Efficiency Rating: D

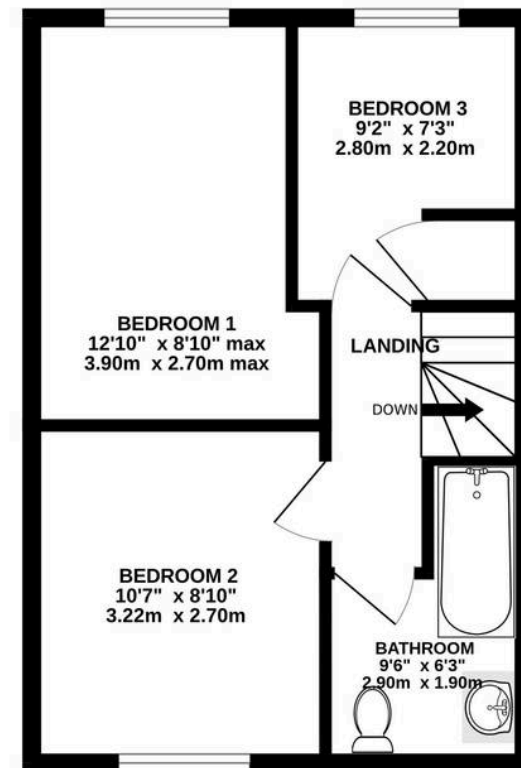
- Stylishly renovated family home with flexible living accommodation throughout
- Recently converted garage creating a versatile additional reception plus utility room
- Spacious lounge, dining/family room and contemporary fitted kitchen
- Three well proportioned bedrooms and a stylish modern family bathroom
- Large rear garden adjoining parkland, ideal for families and outdoor living



GROUND FLOOR
621 sq.ft. (57.7 sq.m.) approx.



1ST FLOOR
360 sq.ft. (33.5 sq.m.) approx.



TOTAL FLOOR AREA : 982 sq.ft. (91.2 sq.m.) approx.

Whilst every attempt has been made to ensure the accuracy of the floorplan contained here, measurements of doors, windows, rooms and any other items are approximate and no responsibility is taken for any error, omission or mis-statement. This plan is for illustrative purposes only and should be used as such by any prospective purchaser. The services, systems and appliances shown have not been tested and no guarantee as to their operability or efficiency can be given.

Made with Metropix ©2026





Stuart Rushton & Company

Stuart Rushton & Co, 35 King Street – WA16 6DW

01565 757000

enquiries@srushton.co.uk

www.srushton.co.uk



We are not authorised to make or give any representations or warranties in relation to the property either here or elsewhere. We assume no responsibility for any statement that may be made in these particulars, and they do not form part of any offer or contract and must not be relied upon as statements or representation of fact. Any areas, measurements or distances are approximate. The text, photographs and plans are for guidance only. Importantly, it should not be assumed that the property has all necessary planning, building regulations or other consents and we have not tested any services, equipment or facilities. Purchasers must satisfy themselves by inspection or otherwise.