







# Garland Hall

Crowley, Northwich

A completely charming quintessential small country estate in the heart of the Cheshire countryside, with a centrepiece Grade II Listed house standing centrally in nearly 7 acres of beautifully managed grounds including formal gardens, surrounding paddocks, tennis court and an excellent range of outbuildings.

Council Tax band: H

Tenure: Freehold

EPC Energy Efficiency Rating: D

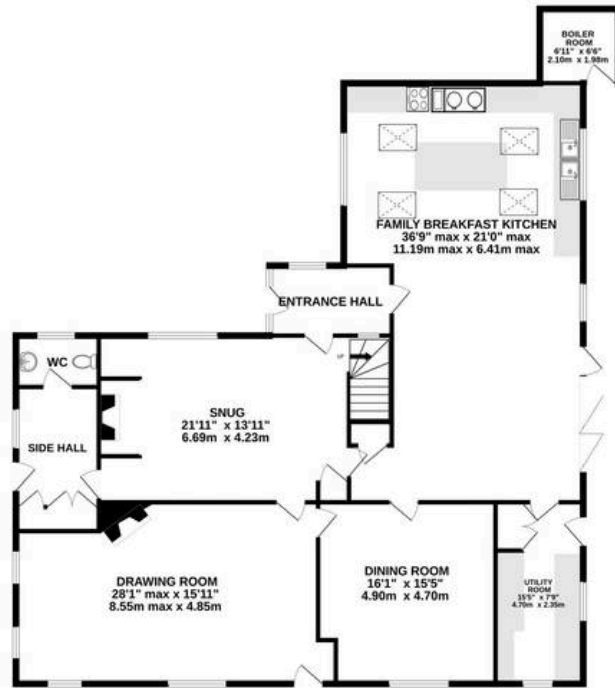
- Fabulous Grade II listed country house with extensive outbuildings, in all nearly 7 acres
- Superb 4500 square foot three storey period house with six bedrooms, two bathrooms and four reception rooms
- Beautiful traditional gardens with tennis court and ornamental pond
- Excellent surrounding paddock land, menage and stables
- Two excellent large detached outbuildings, in all around 5000 square feet







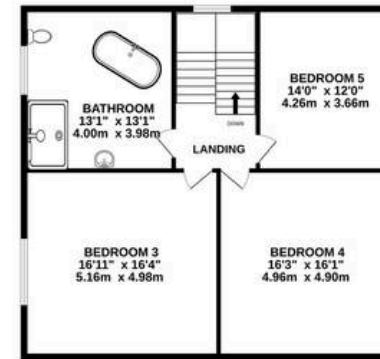
GROUND FLOOR  
2106 sq.ft. (204.0 sq.m.) approx.



1ST FLOOR  
1343 sq.ft. (124.0 sq.m.) approx.



2ND FLOOR  
1056 sq.ft. (97.0 sq.m.) approx.



3RD FLOOR  
105 sq.ft. (9.7 sq.m.) approx.



TOTAL FLOOR AREA : 4564 sq.ft. (424.0 sq.m.) approx.

Whilst every attempt has been made to ensure the accuracy of the floorplan contained here, measurements of doors, windows, rooms and any other items are approximate and no responsibility is taken for any error, omission or mis-statement. This plan is for illustrative purposes only and should be used as such by any prospective purchaser. The services, systems and appliances shown have not been tested and no guarantee as to their operability or efficiency can be given.

Made with Metropix ©2025



## Stuart Rushton & Company

Stuart Rushton & Co, 35 King Street – WA16 6DW

01565 757000

[enquiries@srushton.co.uk](mailto:enquiries@srushton.co.uk)

[www.srushton.co.uk](http://www.srushton.co.uk)



We are not authorised to make or give any representations or warranties in relation to the property either here or elsewhere. We assume no responsibility for any statement that may be made in these particulars, and they do not form part of any offer or contract and must not be relied upon as statements or representation of fact. Any areas, measurements or distances are approximate. The text, photographs and plans are for guidance only. Importantly, it should not be assumed that the property has all necessary planning, building regulations or other consents and we have not tested any services, equipment or facilities. Purchasers must satisfy themselves by inspection or otherwise.