

1 Mead Close

Knutsford

A spacious 5-bed detached dormer bungalow with flexible living, wrap-around garden, and south-facing aspect. Quiet cul-de-sac near schools and town centre. No onward chain.

Council Tax band: E

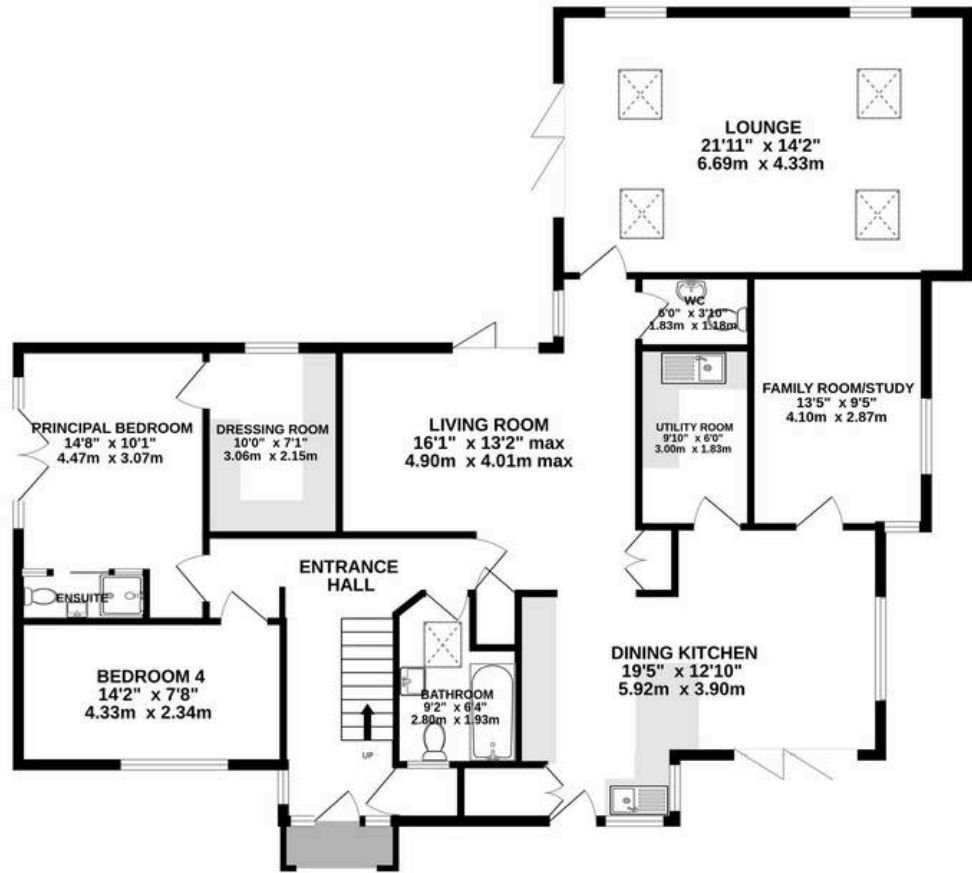
Tenure: Freehold

EPC Energy Efficiency Rating: C

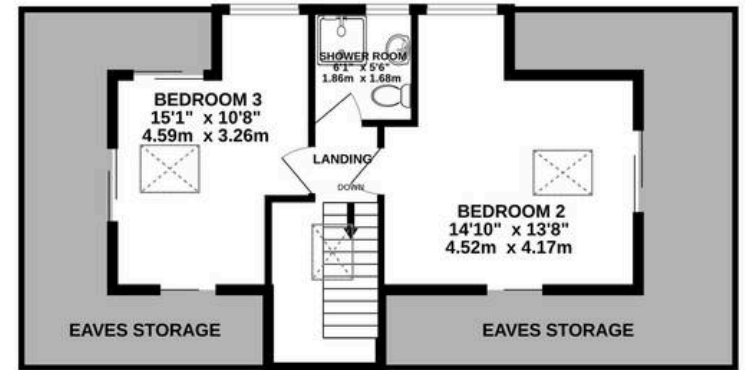
- Substantially extended detached dormer-style bungalow (approx. 1,905 sq.ft.)
- Highly flexible layout ideal for growing families or downsizers, set in a quiet cul-de-sac
- Generous ground floor living space with multiple reception rooms
- Five well-proportioned bedrooms, including principal with en suite and walk-in wardrobe
- South-westerly facing rear garden with great privacy and day-long sunshine into the evening
- No onward chain



GROUND FLOOR
1499 sq.ft. (139.3 sq.m.) approx.



1ST FLOOR
406 sq.ft. (37.7 sq.m.) approx.



TOTAL FLOOR AREA : 1905 sq.ft. (177.0 sq.m.) approx.

Whilst every attempt has been made to ensure the accuracy of the floorplan contained here, measurements of doors, windows, rooms and any other items are approximate and no responsibility is taken for any error, omission or mis-statement. This plan is for illustrative purposes only and should be used as such by any prospective purchaser. The services, systems and appliances shown have not been tested and no guarantee as to their operability or efficiency can be given.





Stuart Rushton & Company

Stuart Rushton & Co, 35 King Street – WA16 6DW

01565 757000

enquiries@srushton.co.uk

www.srushton.co.uk



We are not authorised to make or give any representations or warranties in relation to the property either here or elsewhere. We assume no responsibility for any statement that may be made in these particulars, and they do not form part of any offer or contract and must not be relied upon as statements or representation of fact. Any areas, measurements or distances are approximate. The text, photographs and plans are for guidance only. Importantly, it should not be assumed that the property has all necessary planning, building regulations or other consents and we have not tested any services, equipment or facilities. Purchasers must satisfy themselves by inspection or otherwise.