

Yew Trees, Prestbury

This newly completed detached family home offers approx. 6,500 sq ft of elegant, move-in-ready living space. Blending classic architecture with contemporary design, it features a striking brick and stone façade, enhanced by beautifully landscaped south-facing gardens.

Situated on one of Prestbury's most desirable roads—close to King's School, Prestbury Golf Club, and the village centre—this secure, private plot includes a gated driveway and detached double garage with EV charging and an upper room.

Inside, a grand galleried hallway leads to expansive living areas, including a stunning Sheerin Bespoke kitchen with Miele appliances, a formal lounge, playroom/media room, study, utility spaces, and W.C. Five en-suite double bedrooms are found on the first floor, including a luxurious principal suite with dressing room, vaulted ceilings, en-suite, and private balcony. A top-floor guest suite offers further flexibility.

The tiered garden boasts a large terrace, feature staircase, ambient lighting, and multiple seating areas—perfect for entertaining and family life.



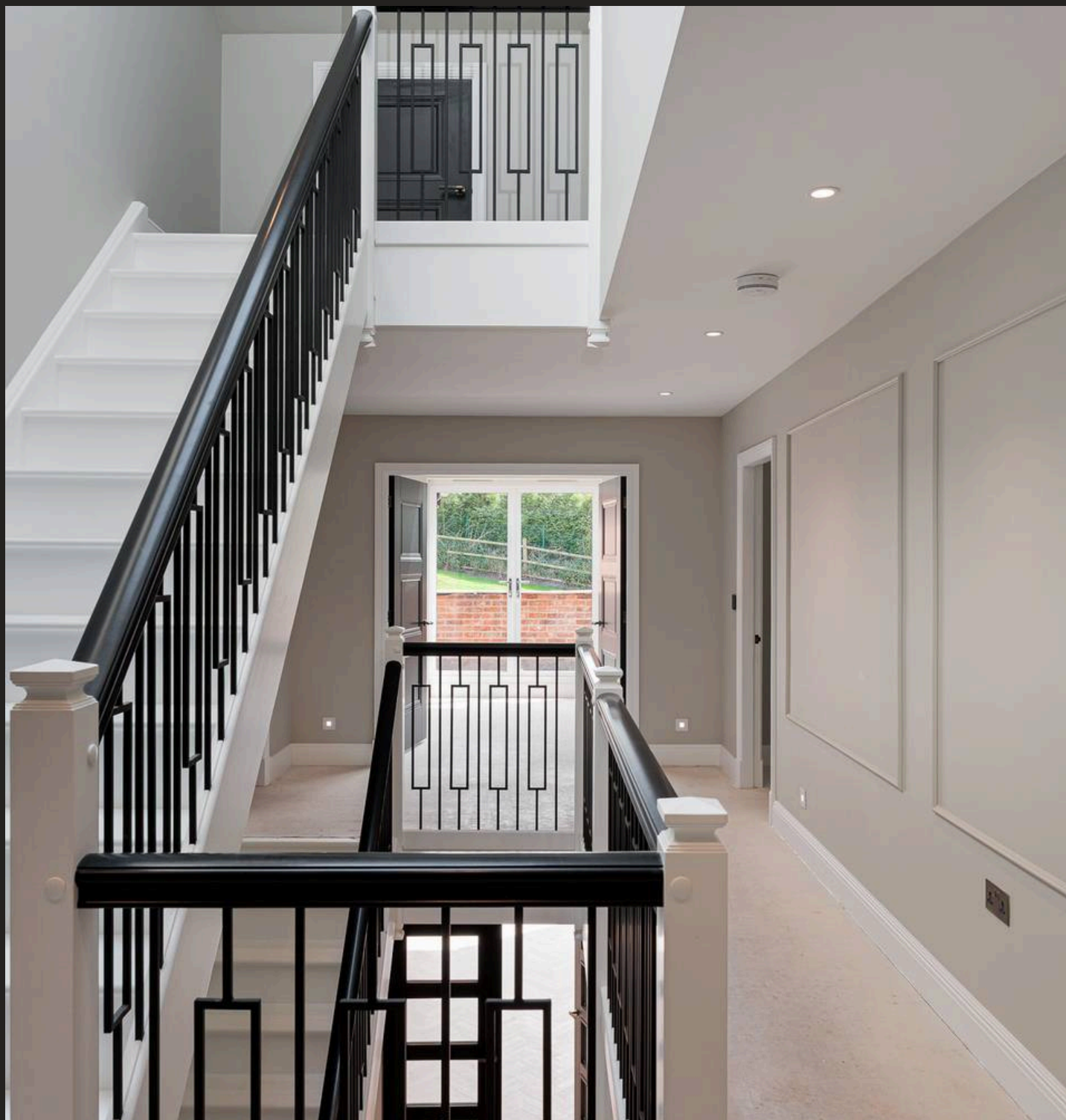


Yew Trees, Prestsbury

- Newly completed and ready for occupation today!
- An impressive detached new build house finished to exacting standards with accommodation reaching to around 6500 sqft
- Beautiful exterior detailing with a mix of brick and sandstone
- 6 bedrooms 6 bathrooms
- Impressive open plan kitchen living area spanning across the rear of the house
- Bespoke hand painted kitchen, pantry, boot room, utility room, and laundry room
- Control4 Home Automation
- Private and secure plot situated just outside Prestsbury Village
- Detached double garage with room above

Council Tax band: TBD

Tenure: Freehold

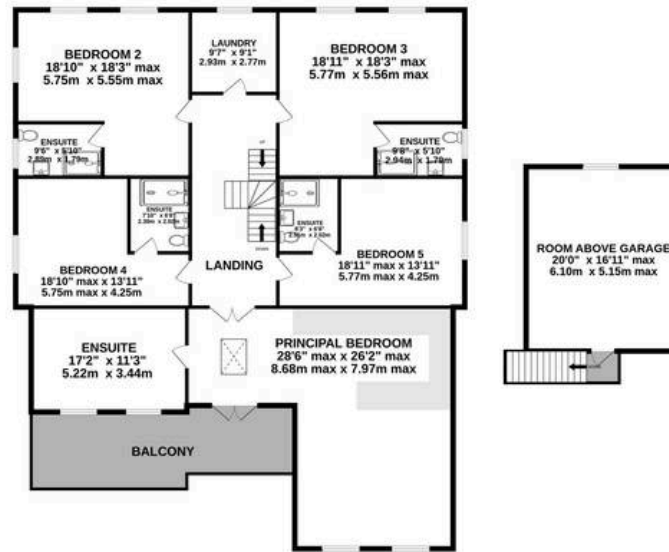




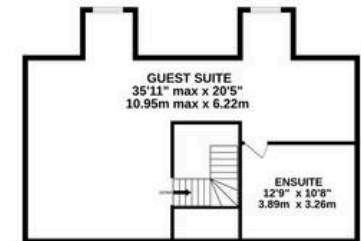
GROUND FLOOR
2996 sq.ft. (278.4 sq.m.) approx.



1ST FLOOR
2698 sq.ft. (250.6 sq.m.) approx.



2ND FLOOR
784 sq.ft. (72.8 sq.m.) approx.



TOTAL FLOOR AREA : 6478 sq.ft. (601.8 sq.m.) approx.

Whilst every attempt has been made to ensure the accuracy of the floorplan contained here, measurements of doors, windows, rooms and any other items are approximate and no responsibility is taken for any error, omission or mis-statement. This plan is for illustrative purposes only and should be used as such by any prospective purchaser. The services, systems and appliances shown have not been tested and no guarantee as to their operability or efficiency can be given.

Made with Metropix ©2024



Stuart Rushton & Company

Stuart Rushton & Co, 35 King Street – WA16 6DW

01565 757000

enquiries@srushton.co.uk

www.srushton.co.uk



We are not authorised to make or give any representations or warranties in relation to the property either here or elsewhere. We assume no responsibility for any statement that may be made in these particulars, and they do not form part of any offer or contract and must not be relied upon as statements or representation of fact. Any areas, measurements or distances are approximate. The text, photographs and plans are for guidance only. Importantly, it should not be assumed that the property has all necessary planning, building regulations or other consents and we have not tested any services, equipment or facilities. Purchasers must satisfy themselves by inspection or otherwise.