



GINGER COW
ESTATE AGENTS

01234 860215

Bittern Lane, Wixams

£335,000

3 3

Situated in the sought-after Wixams development, this well-presented three-bedroom semi-detached home offers stylish and practical living ideal for families, first-time buyers or upsizers.

The accommodation includes an entrance hall, cloakroom/WC, modern fitted kitchen and a spacious living/dining room with doors opening onto the rear garden. Upstairs, the principal bedroom benefits from fitted wardrobes and an en suite shower room, with two further bedrooms and a contemporary family bathroom.

Outside, there is off-road parking for two vehicles and an enclosed rear garden, perfect for relaxing or entertaining.

Further benefits include PVCu double glazing, gas central heating and a convenient location close to local amenities,

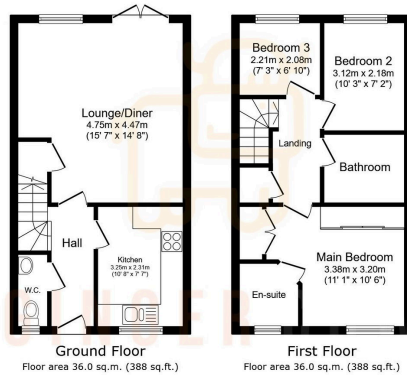


Floor Area: sq. ft.

Tenure: Freehold

Service Charge: £220 per annum

Ground Rent: £0 per annum



Total floor area: 72.0 sq.m. (775 sq.ft.)
 This floor plan is for illustrative purposes only. It is not drawn to scale. Any measurements, floor areas (including any total floor area), openings and orientations are approximate. No details are guaranteed, they cannot be relied upon for any purpose and do not form any part of any agreement. No liability is taken for any error, omission or misstatement. A party must rely upon its own inspection(s). Powered by www.Property24.co.uk

