

Thames & Country

Clarence Cottage

Grade II Listed · c.1600s · Four Centuries of Character

Marlow Road, Bourne End, Buckinghamshire

Offers in Excess of £1,250,000

5

BEDROOMS

3

BATHROOMS

150ft+

GARDEN

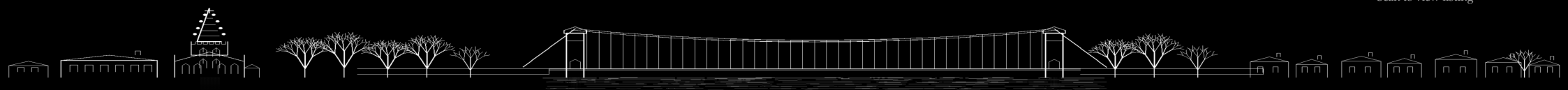
2,940

SQ FT

Freehold · No Onward Chain · EPC Rating E · Council Tax Band G



Scan to view listing





CLARENCE COTTAGE

HARRIS & CO.
ESTATE AGENTS
FOR SALE



Thames & Country

Clarence Cottage

Marlow Road · Bourne End · Buckinghamshire

A remarkable Grade II listed cottage of extraordinary beauty and character, standing in Bourne End since the early 1600s. Original oak timber framing, inglenook fireplace, and four centuries of English family life within these walls.

Accommodation

Reception Hall | Formal Dining Room

Principal Sitting Room | Inglenook Fireplace

Farmhouse Kitchen with Aga | Breakfast Room

Principal Suite: Bedroom, Dressing Room & En-Suite

Bedroom Two with Private En-Suite

Bedrooms Three, Four & Five | Family Bathroom

Utility Room | Ground Floor Cloakroom

Key Features

Grade II Listed · c.1600s Heritage

Original Fireplaces in Almost Every Room

Vaulted Ceilings | Exposed Oak Beams

2,940 Sq Ft | Freehold | No Onward Chain

Gardens & Setting

Walled Courtyard Garden | Paved Terrace

Second Garden Over 150ft | Marquee Scale

Attached Garage | Workshop | Parking

Bourne End Station under Half a Mile











Thames & Country

Clarence Cottage

Some homes are built. This one was born. Clarence Cottage has stood in Bourne End since the early 1600s — here before the roads were laid, before the station was built, before the village took its present shape. Four hundred years of English family life have passed within these walls, and the building is more beautiful, more characterful, and more full of soul for every one of them.

The principal sitting room delivers the house's most powerful moment: a magnificent original brick inglenook fireplace with wood-burning stove, flanked by exposed oak beams that have framed this room since the seventeenth century. The reception hall is a welcoming, well-proportioned space with original fireplace, herringbone parquet flooring and an elegant barley-twist staircase rising from it. The formal dining room adds a further reception space of genuine scale and atmosphere.

The farmhouse kitchen with Aga range cooker is the natural heart of the home — a long, well-lit galley kitchen with exposed beams, colourful splashback tiling and a skylight above, opening through to a breakfast room that overlooks the walled garden. The principal suite is exceptional: a vaulted beamed bedroom, a dressing room with its own original fireplace, and a private en-suite. A second bedroom has its own en-suite, making it an entirely self-contained guest suite.

Three further bedrooms — including two generous doubles with vaulted beamed ceilings — complete an upper floor of genuine character and scale. The gardens are simply more than expected. A walled rear courtyard with paved terrace gives way to a second garden of remarkable scale: over 150ft, mature trees, and a lawn that has hosted a full wedding marquee. Bourne End station is under half a mile for GWR services to Maidenhead, Reading and London Paddington with Elizabeth line connection. Heathrow approximately 25-30 minutes by car.

Four centuries of craftsmanship. One extraordinary home.





Clarence Cottage

Location

Bourne End, Buckinghamshire

Easy commuter access to

GWR · Elizabeth line (via Maidenhead) · A404 · M40 · M4

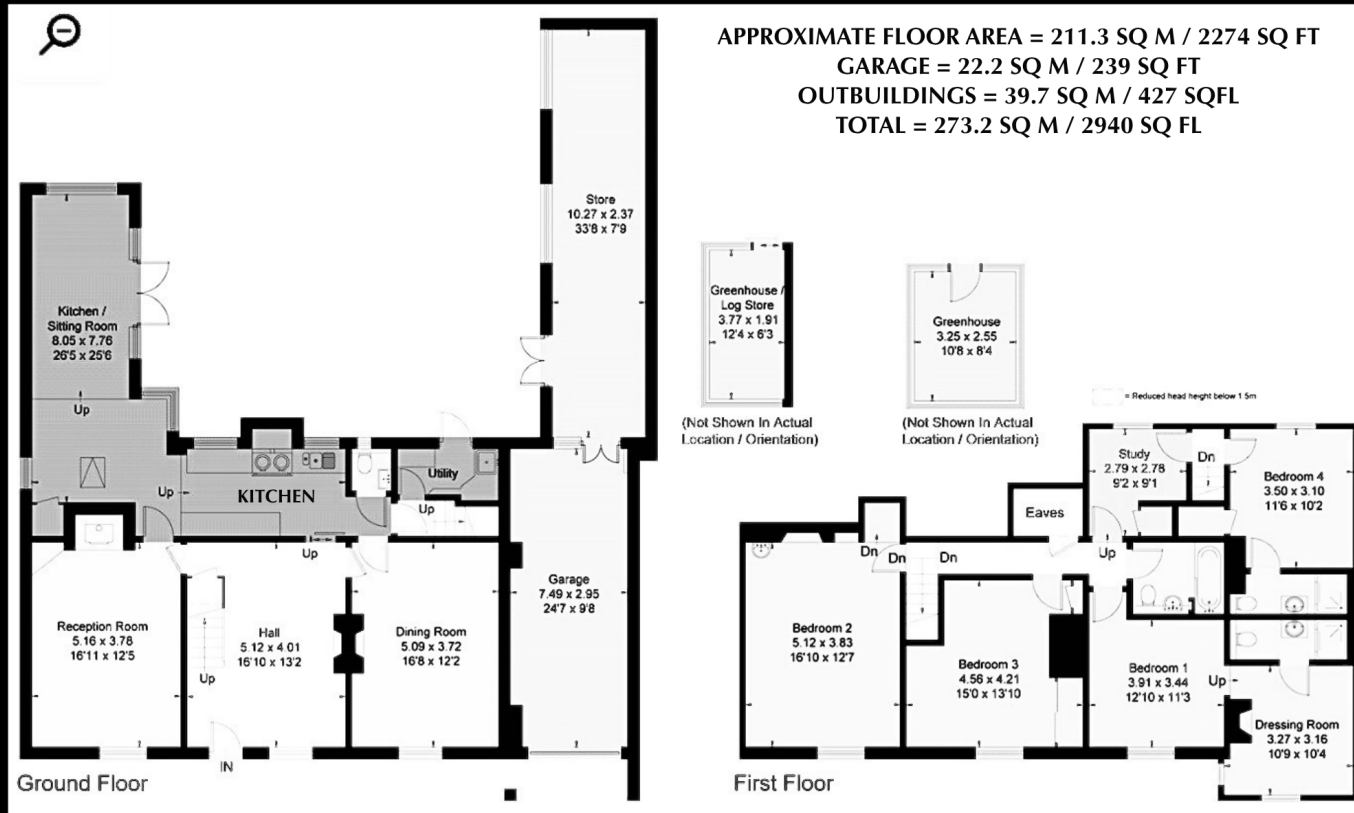
Heathrow 25-30 min · Marlow · Cookham · Beaconsfield

Essential Information

Guide Price	Offers in Excess of £1,250,000
Tenure	Freehold
Chain	No onward chain
Listing	Grade II Listed · c.1600s
EPC Rating	E (48)
Council Tax	Band G — Buckinghamshire Council
Internal Area	2,274 sq ft (211.3 sq m)
Total Area	2,940 sq ft inc. garage & outbuildings
Garden	Walled courtyard + second garden 150ft+
Parking	Off-street driveway Attached garage
Station	Bourne End under 0.5 mile (GWR)
Schools	Claytons Primary within walking distance



CLARENCE COTTAGE



Total Approx Gross Area

273.20_{m2}

2,940.00_{Sqft}



5



3



1 CAR



2

01628 474000

www.thamesandcountry.co.uk

Whilst every attempt has been made to ensure the accuracy of the floorplan contained here, measurements of doors, windows, rooms and any other items are approximate and no responsibility is taken for any error, omission or mis-statement. This plan is for illustrative purposes only and should be used as such by any prospective purchaser. The services, systems and appliances shown have not been tested and no guarantee as to their operability or efficiency can be given. Made with Thames & Country ©2023

Thames & Country

Discover · Personalised · Service

View listing online
thamesandcountry.co.uk

Thames & Country
Marlow International, Parkway
Marlow, Buckinghamshire SL7 1YL
01628 474000
hello@thamesandcountry.co.uk
thamesandcountry.co.uk

Follow us on Instagram
[@thamesandcountry](https://www.instagram.com/thamesandcountry)



Scan to view full listing

