



179 Barden Lane, Burnley, BB10 1HY

£130,000



179 Barden Lane, Burnley, BB10 1HY

£130,000

Nestled in the sought-after area of Barden Lane, Burnley, this charming mid-terrace house offers a delightful blend of character and modern living. Built in 1900, the property spans an impressive 969 square feet, providing ample space for families or those seeking a comfortable home.

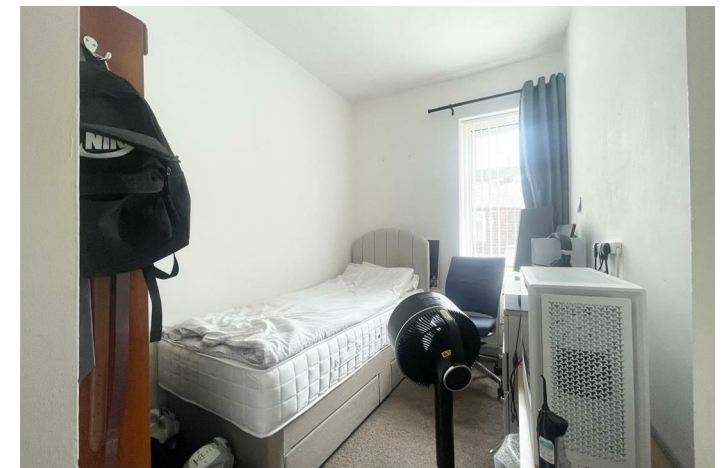
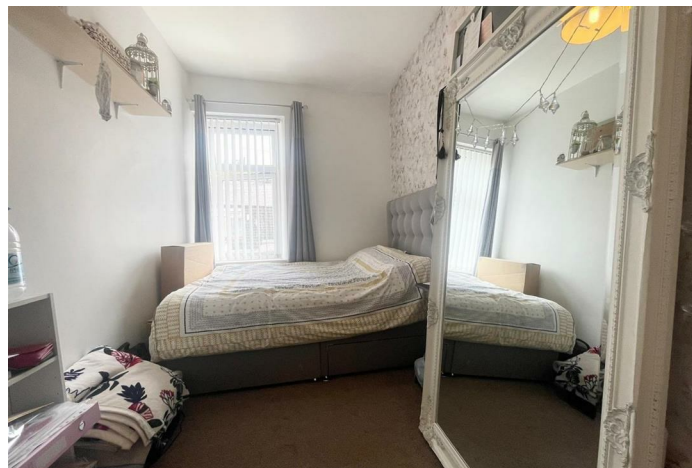
The property is situated in a desirable location, making it an ideal choice for those looking to settle in a vibrant community with excellent amenities nearby.

This home presents a wonderful opportunity for buyers looking to add their personal touch and create their dream living space. With its charming features and potential for expansion, this property is not to be missed. Whether you are a first-time buyer or seeking a family home, this mid-terrace house on Barden Lane is sure to impress.

Description



Situation



null

Council Tax Band:

Available:

Floor Plans

Area Map



Energy Performance Graph

