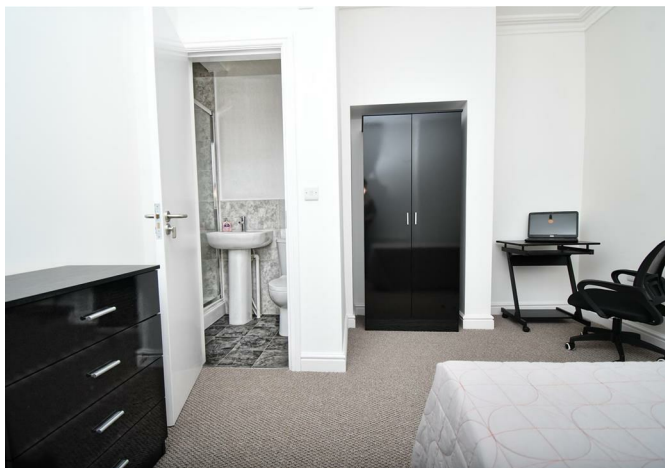




27 Deepdale Road, Preston, Lancashire, PR1 5AP

Asking price £169,995



## 27 Deepdale Road, Preston, Lancashire, PR1 5AP

Asking price £169,995

Nestled on Deepdale Road in Preston, this mid-terrace house presents an excellent investment opportunity for discerning buyers. With four well-proportioned bedrooms and four bathrooms, this property is currently configured as a four-room House in Multiple Occupation (HMO), making it ideal for those looking to capitalise on the rental market.

The location is particularly advantageous, being in close proximity to the city centre, which offers a wealth of amenities, including shops, restaurants, and public transport links. This ensures that tenants will enjoy both convenience and accessibility, enhancing the property's appeal.

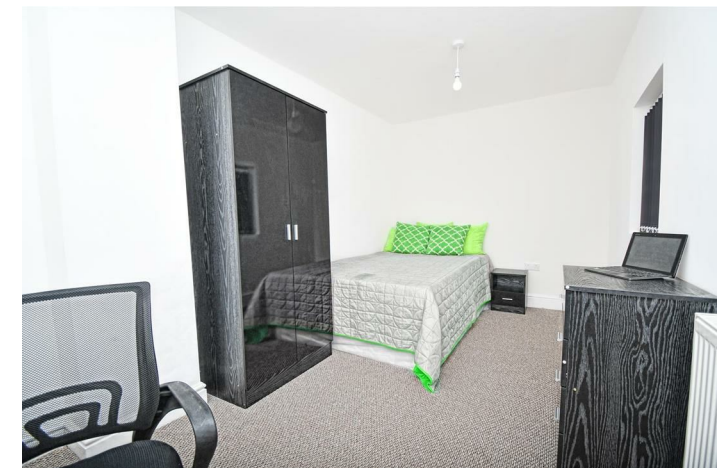
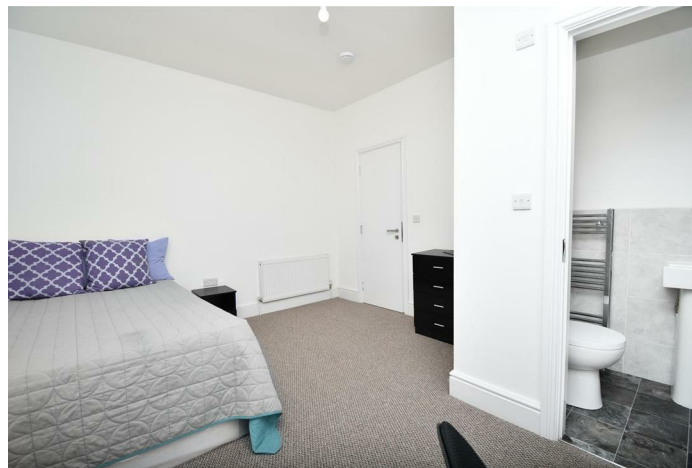
As the property comes with tenants already in situ, it provides an immediate income stream for investors. The layout and facilities are designed to accommodate multiple occupants comfortably, making it a practical choice for those seeking to invest in the thriving Preston rental market.

This property is strictly for investment purposes, and it is essential for potential buyers to consider the benefits of owning a well-located HMO in a vibrant area. With its combination of space, functionality, and prime location, this property on Deepdale Road is a compelling option for any serious investor looking to expand their portfolio.

## Description



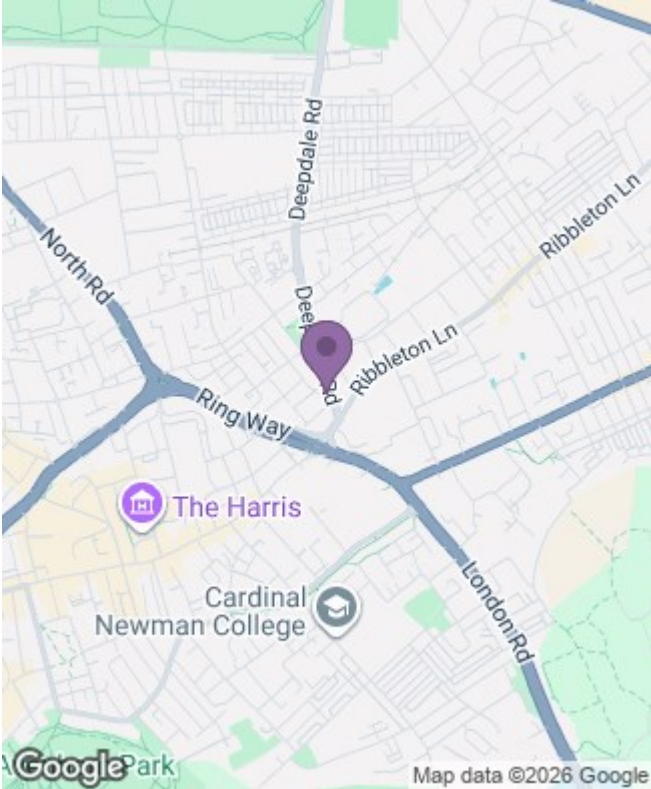
## Situation



null  
Council Tax Band: A  
Available:

# Floor Plans

# Area Map



# Energy Performance Graph

