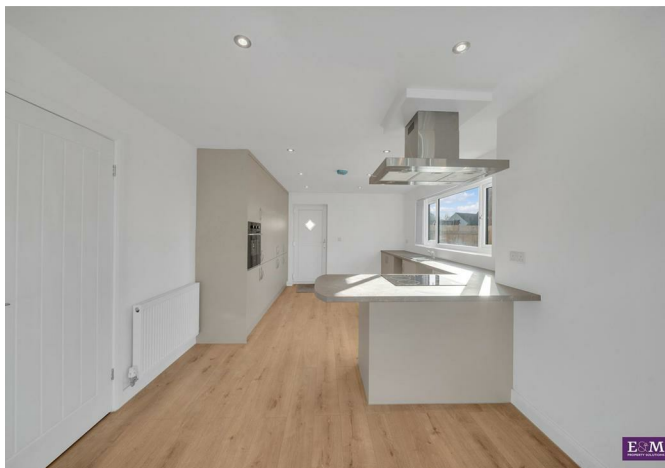




7 Southern Court, Burnley, BB12 8BF
Offers over £375,000





7 Southern Court, Burnley, BB12 8BF

Offers over £375,000

Brand New 4-Bed Detached Home – Private Plot off Ightenhill Park Lane

Discover modern living at its finest with this stunning newly built 4 bedroom detached property, perfectly positioned on a private plot just off the highly sought-after Ightenhill Park Lane. Built to an exceptional standard throughout, this home offers contemporary style, quality finishes, and thoughtful design, ideal for families, professionals, or anyone seeking a peaceful home close to Burnley's best amenities.

Property Highlights

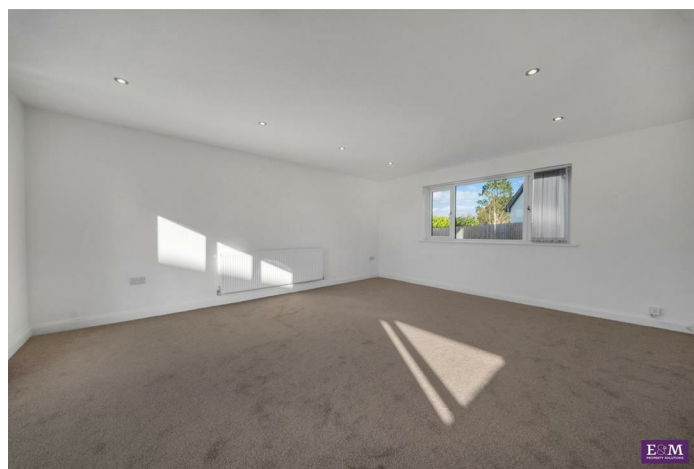
Fully modernised with high-spec fixtures and finishes

Four Spacious Bedrooms – Ideal for family living

Description

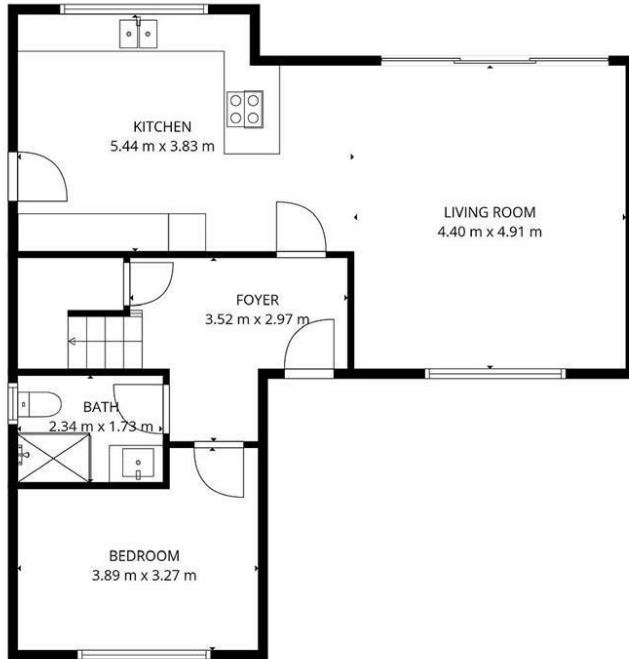


Situation

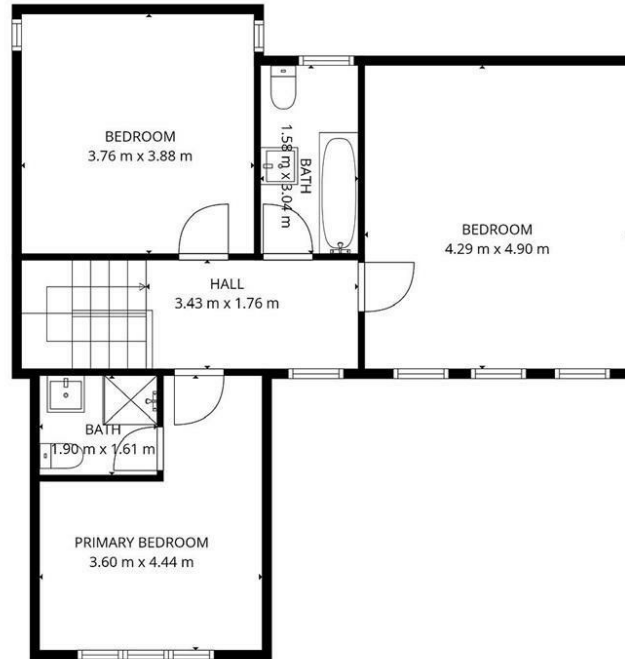


null
Council Tax Band:
Available:

Floor Plans



1st Floor

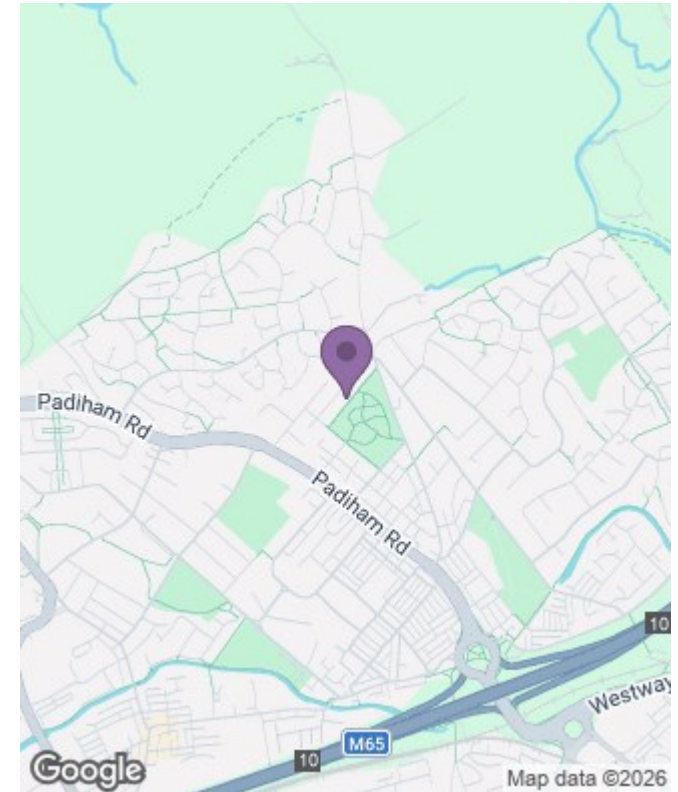


1st floor

TOTAL: 121 m²
 1st Floor: 69 m², 1st floor: 52 m²
 EXCLUDED AREAS: LOW CEILING: 15 m², WALLS: 13 m²

MEASUREMENTS DEEMED HIGHLY RELIABLE BUT NOT GUARANTEED.

Area Map



Energy Performance Graph

