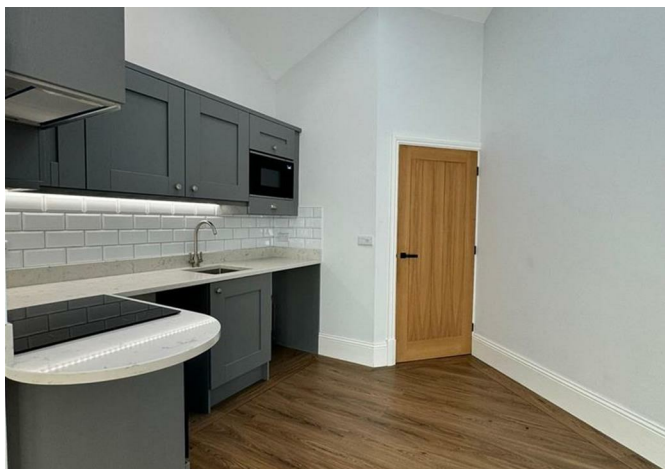
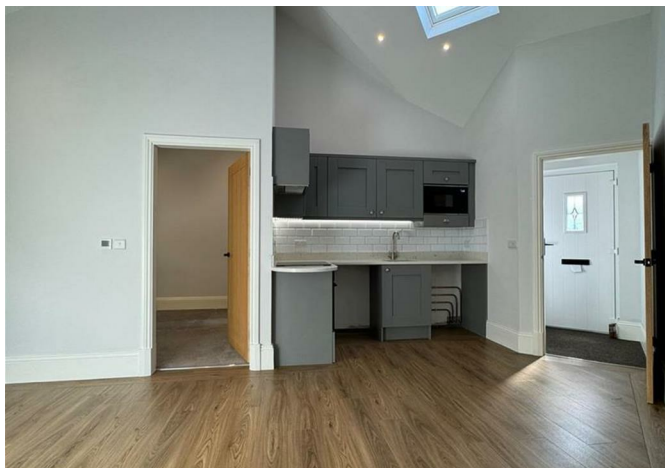




Mulberry Green, 3 Ashworth Road, Edgeside, Waterfoot, Rossendale, BB4 9JE  
£695 Per month





## Mulberry Green, 3 Ashworth Road, Edgeside, Waterfoot, Rossendale, BB4 9JF

### £695 Per month

Welcome to this charming bungalow located on Mulberry Green, Ashworth Road in the picturesque village of Edgeside, Waterfoot, Rossendale.

Upon entering, you are greeted by a cosy reception room that is perfect for relaxing or entertaining guests. The property also comprises of a double bedroom and modern bathroom.

This bungalow features underfloor heating throughout, ensuring warmth and comfort during the colder months. The contemporary fixtures and fittings add a touch of elegance to the space, creating a modern and inviting atmosphere.

One of the highlights of this property is the open plan lounge/kitchen area, providing a seamless flow between cooking, dining, and lounging spaces. This layout is perfect for those who enjoy hosting gatherings or simply relaxing in a bright and airy environment.

Located in a tranquil setting, this bungalow offers a peaceful retreat from the hustle and bustle of everyday life.

Don't miss the opportunity to make this bungalow your own and enjoy the comfort and convenience it has to offer. Contact us today on 01282 711560 to arrange a viewing.

## Description



## Situation

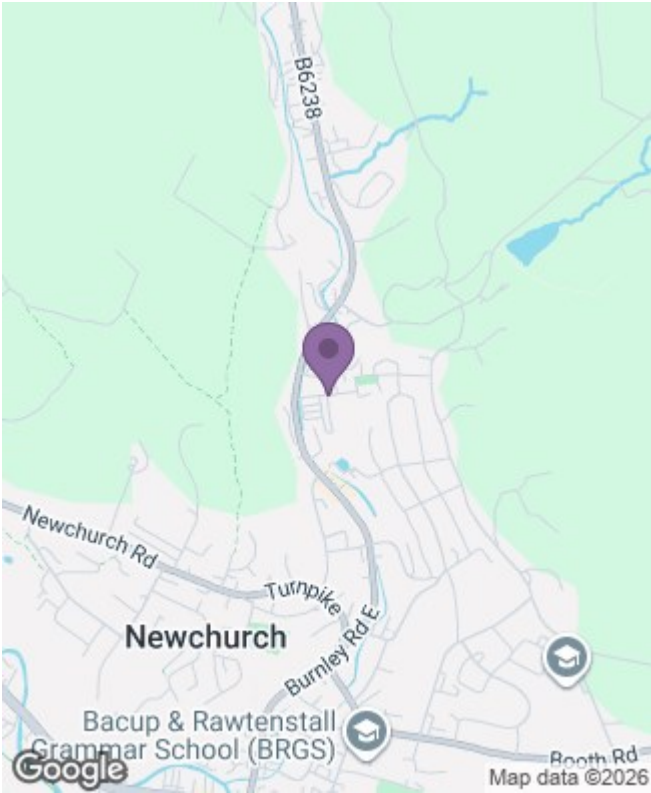


Unfurnished  
Council Tax Band: A  
Available: 18th September 2024



Floor Plans

Area Map



Energy Performance Graph

