



ROOM 4, 15 Montague Road, Burnley, Lancashire, BB11 4JQ  
£95 Per week



## ROOM 4, 15 Montague Road, Burnley, Lancashire, BB11 4JQ

£95 Per week

A fantastic opportunity to share a fully furnished house is available at 15 Montague Road, Burnley. The property boasts a separate fully fitted kitchen and a furnished living dining area with a smart TV. The house has four rooms in total and two of the rooms are en-suite, while the other two share a large communal shower room.

Recently refurbished to a very high standard, the house has been decorated throughout to an exceptionally high standard with modern appliances and furnishings. The attention to detail paid to create a homely atmosphere is evident in every corner of the house.

Situated in a prime location, the property is conveniently located for local amenities such as shops, cafes, and restaurants. Excellent transport links are available for commuters, with easy access to nearby towns like Blackburn, Manchester, and Preston. The property is also located close to several business opportunities, making it an excellent choice for professionals.

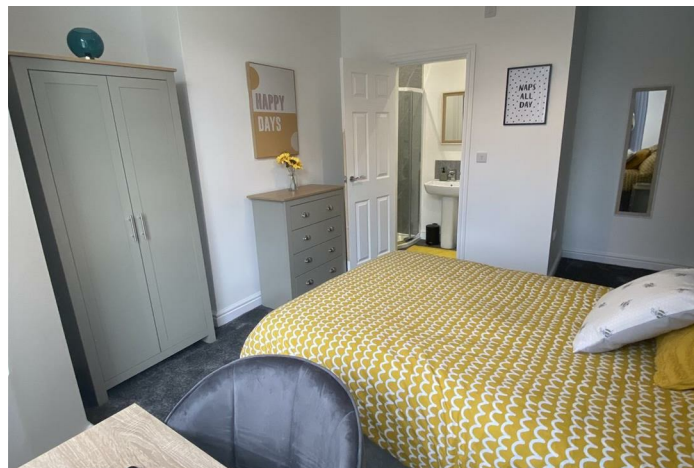
The local area abounds with attractions, such as Towneley Hall Art Gallery and Museum, which houses one of the country's leading collections of fine art, glassware, and museum collections. For those who enjoy outdoor activities, there is the Thompson Park, with its beautiful gardens and lake, which provides an ideal place to relax and enjoy nature.

In summary, this fully-furnished house share, recently refurbished to a high standard, offers comfortable living accommodation with excellent access to local amenities, transport links, and local attractions. If you are interested in this property and would like to arrange a viewing, please contact the agent for more information.

## Description

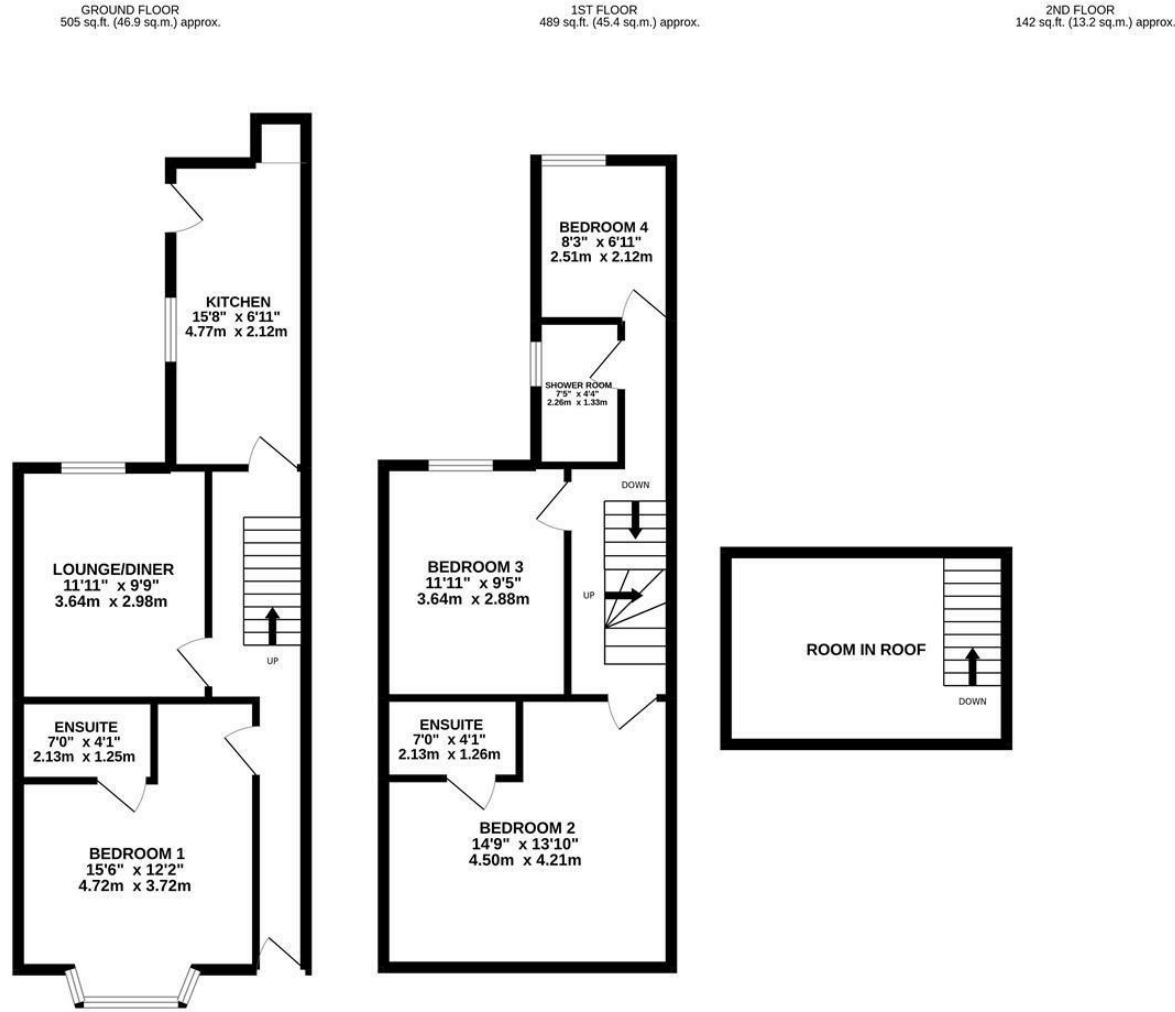


## Situation



Furnished  
Council Tax Band: A  
Available:

# Floor Plans

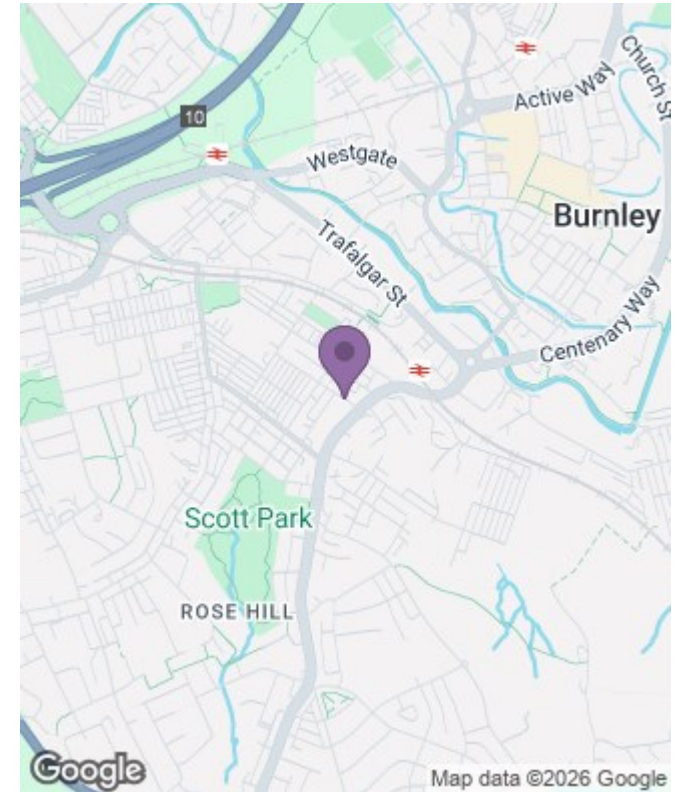


TOTAL FLOOR AREA: 1136 sq.ft. (105.5 sq.m.) approx.

Whilst every attempt has been made to ensure the accuracy of the floorplan contained here, measurements of doors, windows, rooms and any other items are approximate and no responsibility is taken for any error, omission or mis-statement. This plan is for illustrative purposes only and should be used as such by any prospective purchaser. The services, systems and appliances shown have not been tested and no guarantee as to their operability or efficiency can be given.  
Made with Metropix ©2022



# Area Map



# Energy Performance Graph

