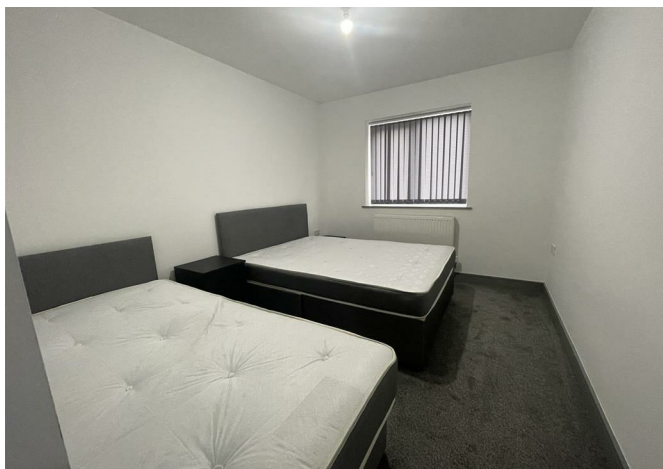




Apt 1, 1 Cleaver Street, Burnley, Lancashire, BB10 3BE  
£800 Per month



## Apt 1, 1 Cleaver Street, Burnley, Lancashire, BB10 3BE

**£800 Per month**

E&M Property Solutions are pleased to present to the lettings market these beautiful 2 bedroom apartments available To Let located off Briercliffe Rd, Burnley. The apartments consist of 2 spacious bedrooms, a large open plan lounge/kitchen and a 3pc family bathroom suite & shower.

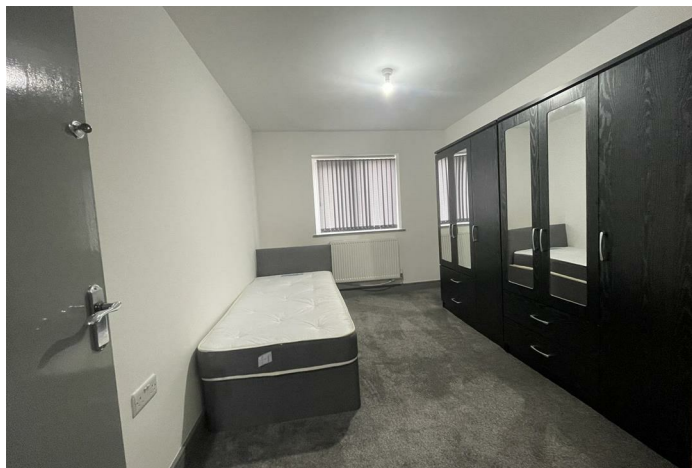
The apartments have a communal landscaped garden and a private car park. Located a short walk away from all the local amenities, the beautiful Thompson Park and the main transport links.

## Description



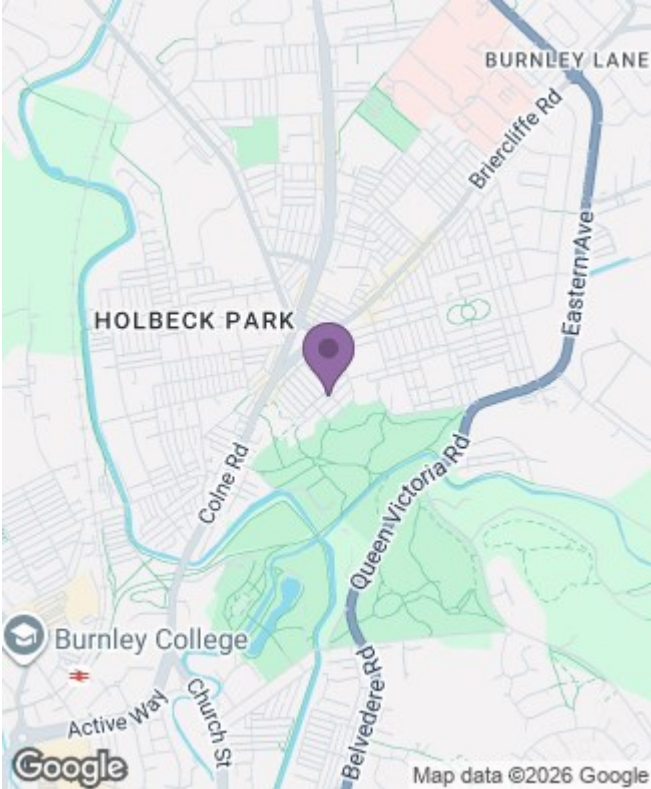
## Situation

Part furnished  
Council Tax Band: A  
Available:



# Floor Plans

# Area Map



# Energy Performance Graph

