



- Two double bedroom end of terrace
- Garage own drive
- Off Street parking
- Large sunny aspect rear garden

## 57 Seaton Gardens, Ruislip Manor, Middlesex , HA4 0BB

Asking Price Of £550,000

An attractive and well-presented two-bedroom end-of-terrace family home, ideally situated on a popular residential road within easy reach of the shops, amenities and transport links of Ruislip Manor and Ruislip Gardens. In our opinion, this sought-after property offers excellent potential to extend, subject to the usual planning consents, making it an ideal opportunity for purchasers looking to create a home tailored to their own requirements.



## Property Description

### THE PROPERTY

Situated within a quiet and highly desirable residential location, this attractive two double bedroom end of terrace home presents an excellent opportunity for buyers seeking a property with scope to extend and add value. Well maintained throughout, the property has been lovingly cared for and offers a wonderful blank canvas for those wishing to create a home to their own specification. The accommodation is well balanced, with a welcoming entrance hall leading to a bright and spacious bay-fronted reception room, providing an ideal space for both relaxing and entertaining. To the rear, the generously sized kitchen enjoys views over the garden and offers ample space for dining, together with exciting potential to remodel into a contemporary kitchen/breakfast room, subject to any necessary consents.

The first floor comprises two excellent double bedrooms, both offering generous proportions and plenty of natural light, together with a family bathroom.

### OUTSIDE

To the front, the property benefits from its own private driveway leading to an attached garage, providing excellent off-street parking and additional storage. The private rear garden offers an ideal space for outdoor entertaining, gardening or simply relaxing during the warmer months. A particular feature of the property is the additional detached garage, accessed via gated rear access from the garden. This highly versatile space is ideal for car enthusiasts, those requiring secure storage for classic vehicles, motorcycles or bicycles, or anyone seeking a workshop, hobby room or substantial additional storage. Both garages are fitted with power and lighting, enhancing their practicality and making them suitable for a variety of uses.

### THE LOCATION

Seaton Gardens is a premier road ideally positioned in a sought-after neighbourhood close to the shopping amenities and transport links of Ruislip and Ruislip Manor. The Metropolitan/Piccadilly line provides reliable links into the City and West End. The property is also located perfectly for bus links giving easy access to South Ruislip & Ruislip Gardens Central Line stations. For the motorist the A40 is a short drive away providing access to Central London and the Home Counties. For families, there are a number of highly regarded schools that cater for children of all ages within close proximity including Lady Bankes, Sacred Heart and Ruislip High.



# Seaton Gardens HA4

Approx. Gross Internal Floor Area  
64.0 Sq M - 690 Sq Ft (Excluding Garage)  
Garage Area = 27.6 Sq M - 297 Sq Ft  
Total Area = 91.6 Sq M - 987 Sq Ft

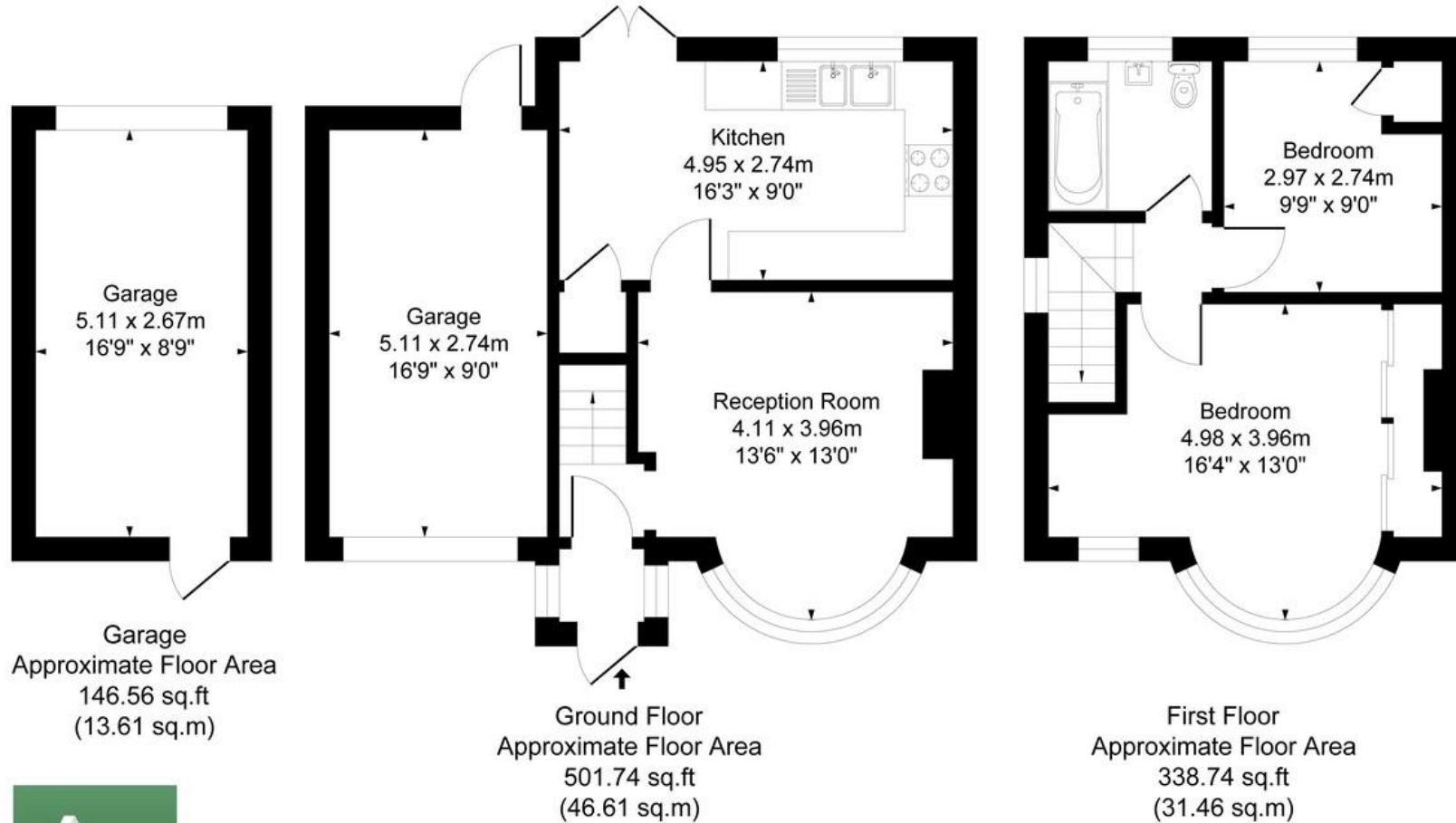


Illustration for identification purposes only, measurements are approximate, not to scale.  
Produced By Esjay Property Marketing

Hillingdon office  
11 Crescent Parade  
Hillingdon  
UB10 OLG

Uxbridge office  
41 Belmont Road  
Uxbridge  
UB8 1QT

Hillingdon office 01895 231311  
Uxbridge office 01895 707777  
info@andrewsresidential.co.uk  
www.andrewsresidential.co.uk

Agents Note: Whilst every care has been taken to prepare these sales particulars, they are for guidance purposes only. All measurements are approximate and for general guidance purposes only and whilst every care has been taken to ensure their accuracy, they should not be relied upon and potential buyers are advised to recheck the measurements