



CHARLES KNIGHT
ESTATE AGENTS



1 Harper Mews, Plum Lane

, London, SE18 3AH

£650,000

Nestled on the charming Plum Lane in London, this beautifully presented three-bedroom townhouse is a splendid example of modern family living. Spanning three floors, the property offers a generous and versatile layout that is both stylish and practical. Upon entering, you are greeted by a bright and spacious reception room, perfect for everyday living and entertaining guests.

The contemporary kitchen is thoughtfully designed, featuring ample storage and workspace, making it a delight for any home cook. Each of the three well-sized double bedrooms provides comfortable accommodation, ensuring that family members or guests can enjoy their own private space. The property boasts two modern bathrooms, along with a convenient ground-floor cloakroom, catering to the needs of busy households.

Outside, the appeal continues with off-street parking at the front, a valuable asset in London, and a private rear garden that serves as a tranquil retreat. This outdoor space is ideal for al fresco dining, entertaining friends, or simply unwinding after a long day.

Situated in a desirable residential area, the property is close to the lush green spaces of Plumstead Common, offering a perfect balance of urban convenience and natural beauty. Residents will benefit from easy access to the extensive amenities of Woolwich, which include a variety of shops, cafés, restaurants, and leisure facilities. Furthermore, excellent transport links, including National Rail and Elizabeth line services, provide swift connections into Central London, making this townhouse an exceptional opportunity for families, professionals, and investors alike.

Viewing

Please contact our Lewisham Office on 02088 524441 if you wish to arrange a viewing appointment for this property or require further information.



3



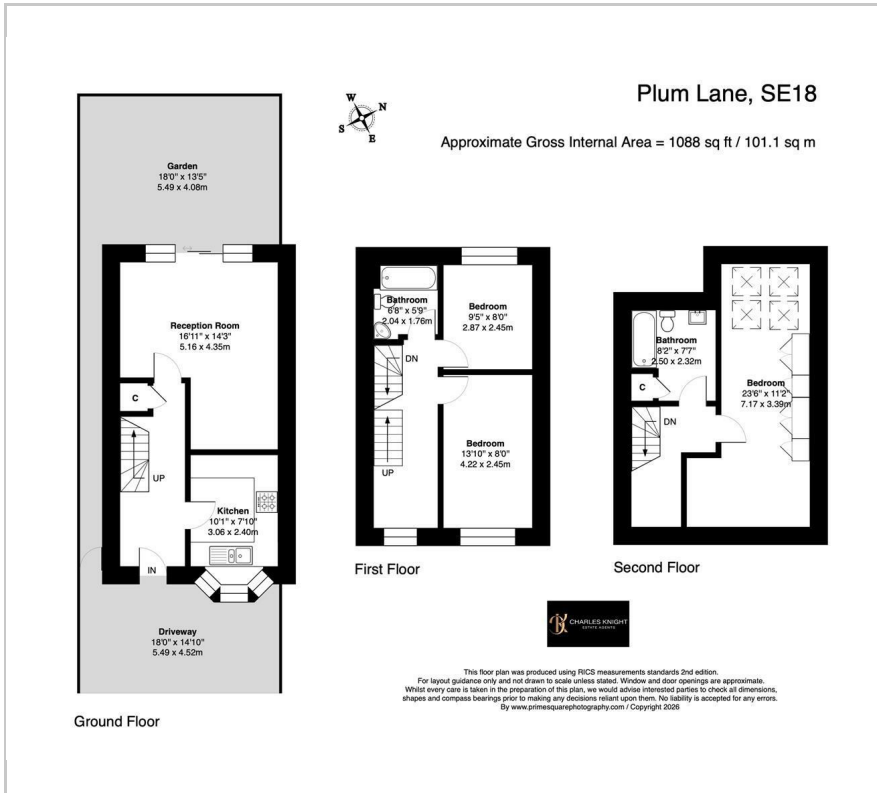
2



1



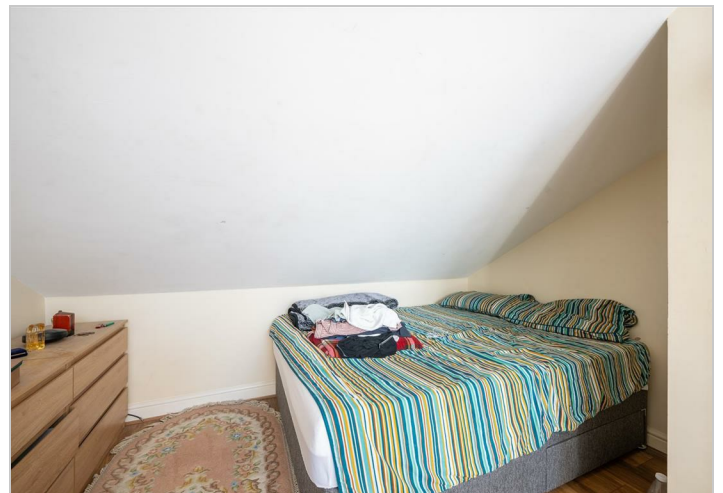
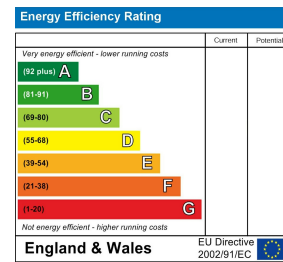
Floor Plan



Area Map



Energy Efficiency Graph



These particulars, whilst believed to be accurate are set out as a general outline only for guidance and do not constitute any part of an offer or contract. Intending purchasers should not rely on them as statements of representation of fact, but must satisfy themselves by inspection or otherwise as to their accuracy. No person in this firm's employment has the authority to make or give any representation or warranty in respect of the property.