



Heywoods.
01782 617343
For Sale

Heywoods.

1 Newcastle Road, Madeley

Crewe

£160,000

Heywoods.

1 Newcastle Road

Madeley, Crewe

A recently decorated two bedroom end town house in the popular village of Madeley, offered with no upward chain. The property features two reception rooms, a fitted kitchen, separate utility space and a first floor family bathroom. Set on a generous plot with ample driveway parking, enclosed gardens and potential to extend subject to planning permission.

Council Tax band: B

Tenure: Freehold

EPC Energy Efficiency Rating: D

EPC Environmental Impact Rating: E

- Two Bedroom End Town House
- Generously Sized Plot - Potential To Extend STPP
- Popular Village Location
- Fitted Kitchen and Separate Utility Space
- Two Reception Rooms
- Recently Decorated Throughout
- First Floor Family Bathroom
- Ample Driveway Parking
- Enclosed Side and Rear Garden
- No Upward Chain





PORCH

6' 5" x 3' 7" (1.96m x 1.08m)

ENTRANCE

3' 3" x 2' 7" (0.99m x 0.79m)

LIVING ROOM

13' 2" x 11' 11" (4.01m x 3.64m)

DINING ROOM

8' 5" x 7' 11" (2.57m x 2.42m)

KITCHEN

8' 1" x 8' 2" (2.46m x 2.50m)

REAR PORCH / UTILITY

6' 1" x 5' 6" (1.86m x 1.68m)

FIRST FLOOR LANDING

11' 2" x 2' 7" (3.41m x 0.78m)

BEDROOM ONE

14' 5" x 12' 0" (4.39m x 3.67m)

BEDROOM TWO

8' 0" x 7' 10" (2.44m x 2.38m)

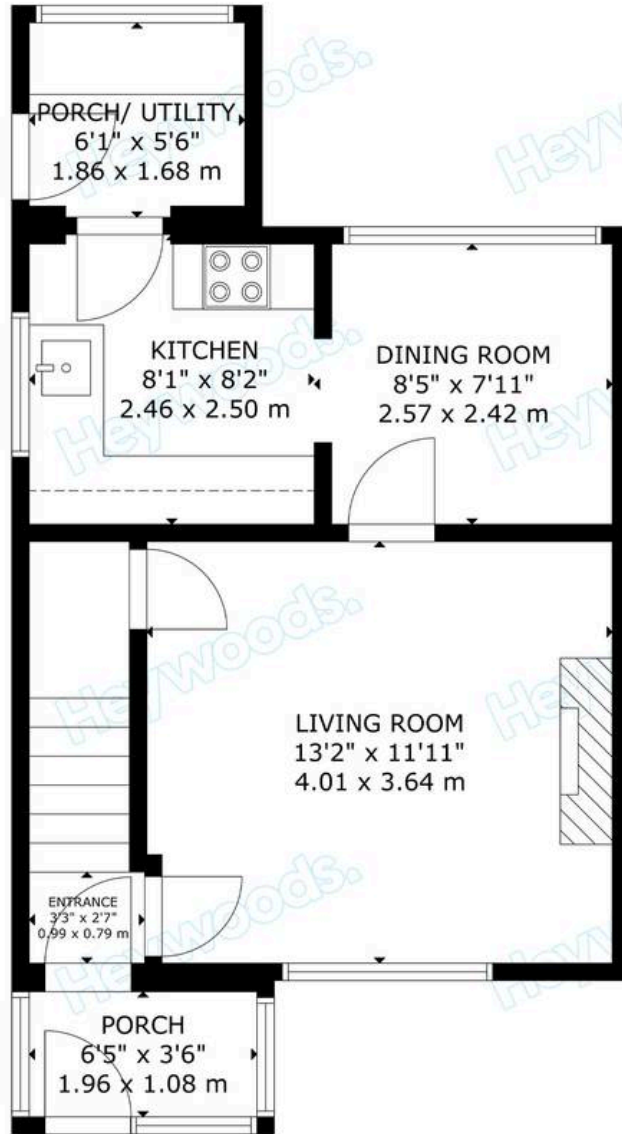
BATHROOM

7' 10" x 7' 10" (2.40m x 2.38m)

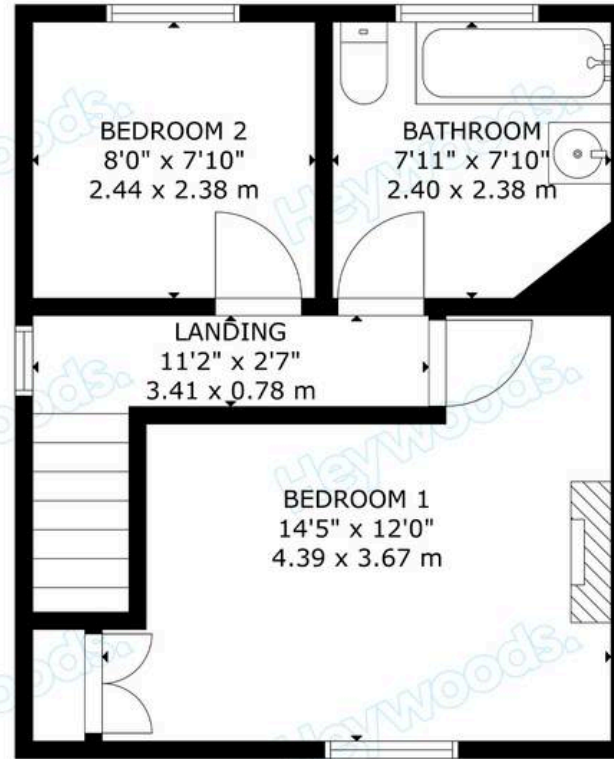
AGENTS NOTES

Tenure - Freehold Council Tax Band - B EPC Rating - D

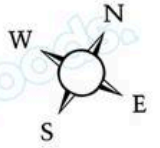




GROUND FLOOR



FIRST FLOOR



GROSS INTERNAL AREA
 TOTAL: 68 m²/735 sq.ft
 GROUND FLOOR: 37 m²/402 sq.ft, FIRST FLOOR: 31 m²/333 sq.ft
 SIZE AND DIMENSIONS ARE APPROXIMATE, ACTUAL MAY VARY







Heywoods

Heywoods, The Estate Offices Blackfriars Road - ST5 2EB

01782 617343 • sales@heywoodsproperty.co.uk • heywoodsproperty.co.uk/