



51 Colman Way
Redhill

Guide Price **£500,000**



Presenting this impressive double fronted, three bedroom end of terrace family home, ideally positioned in a sought-after residential location within easy reach of excellent transport links and local amenities. The property offers off road parking for several cars, providing convenient access for families and visitors alike. Upon entering, you are welcomed by a bright and spacious dual aspect lounge, thoughtfully designed to maximise natural light and create a warm, inviting atmosphere for relaxation or entertaining guests. The heart of the home is the open plan kitchen dining room, featuring contemporary fittings and ample space for both casual family meals and more formal dining occasions. Upstairs, you will find three well-proportioned bedrooms, each offering comfortable accommodation and flexibility for growing families or those in need of a home office. The beautiful modern shower room is complemented by a separate WC, ensuring practicality and comfort for busy households. The property is situated approximately a 15-minute walk from the station, offering direct and convenient access to both London and Brighton, making it an ideal choice for commuters. Additionally, the home is close to well-regarded local schools, parks, and a range of community facilities, ensuring all essential amenities are within easy reach. With its generous layout, modern interiors, and prime location, this property represents an exceptional opportunity for families seeking a stylish and practical home in a thriving community. Early viewing is highly recommended to fully appreciate the quality and space on offer.

Council Tax band: C

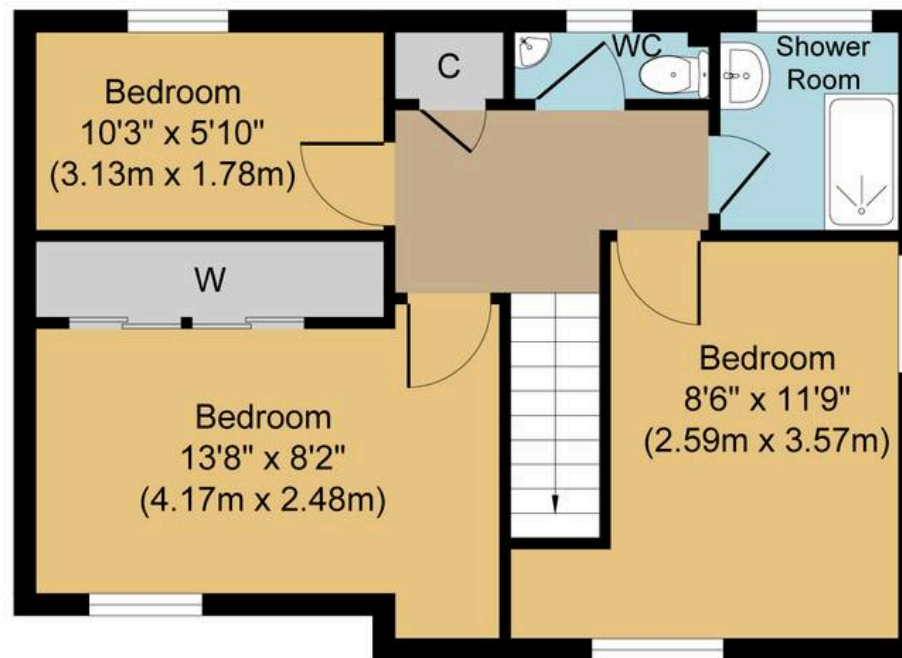
Tenure: Freehold







Ground Floor
Approximate Floor Area
441 sq. ft
(40.97 sq. m)



First Floor
Approximate Floor Area
441 sq. ft
(40.97 sq. m)

Colman Way, RH1
Approx. Gross Internal Floor Area 882 sq. ft. (81.94 sq. m)



Whilst every attempt has been made to ensure the accuracy of the floor plan contained here, measurements of doors, windows, rooms and any other items are approximate and no responsibility is taken for any error, omission, or mis-statement. The measurements should not be relied upon for valuation, transaction and/or funding purposes. This plan is for illustrative purposes only and should be used as such by any prospective purchaser or tenant. The services, systems and appliances shown have not been tested and no guarantee as to their operability or efficiency can be given.